

Jewish Communal Fund

GIVING REPORT

2019





About Jewish Communal Fund

Jewish Communal Fund (JCF) is the largest and most active network of Jewish funders in the nation. JCF facilitates philanthropy for 8,000 people associated with 4,000 funds, totaling \$2 billion in charitable assets. In FY 2019, our generous Fundholders granted out \$456 million—23% of our assets—to charities in all sectors.

The impact of JCF's network of funders on the Jewish community and beyond is profound. In addition to an annual unrestricted grant to UJA-Federation of New York, JCF's Special Gifts Fund (our endowment) has granted more than \$18 million since 1999 to support programs in the Jewish community at home and abroad, including kosher food pantries and soup kitchens, day camp scholarships for children from low-income homes, and programs for Holocaust survivors with dementia. These charities are selected with the assistance of UJA-Federation of NY.

For a simpler, easier, smarter way to give, look no further than the Jewish Communal Fund.

To learn more about JCF, visit jcfny.org or call us at (212) 752-8277.

Table of Contents

1	Introduction
2-5	The JCF Philanthropic Community
6-13	Grants
14-15	JCF Social Impact Loan Program
16	Contributions

As the leading collective of Jewish funders in the country, the Jewish Communal Fund (JCF) has a singular mission: to help our Fundholders get better at giving back.

For nearly 50 years, we've helped our Fundholders make their charitable giving simpler and more tax efficient—and along the way we have made a profound impact on our community.

In addition to our Fundholders' giving—totaling \$456 million in FY 19—JCF's endowment donates millions of dollars to Jewish communal institutions and charities.

We have a gift for giving.

In this third annual JCF Giving Report, we provide updated data and research capturing giving trends within the Jewish community as seen from one of the longest-running donor advised funds in the country. Now entering its 48th year, JCF has played a critical role in facilitating charitable giving for a wide spectrum of Jewish philanthropists of varying means, ages, interests and religious affiliations.

Here are some statistics that shed light on the uniqueness that is the JCF funder community:

- JCF Fundholders make an average of 16 grants per fund per year, with a median grant amount of \$500.
- JCF Fundholders distributed 23% of charitable assets, as a collective, in FY 19.
- More than one-third of funds distributed 50% or more of the balance in their funds to charities in FY 19.
- The sectors that received the largest number of dollars from JCF Fundholders in FY 19 were education, community organizations/human services, and Israel (these same categories topped the chart in previous years, too).
- Our Fundholders made 44,000 grants (70% of all grants) to Jewish organizations, totaling nearly \$200 million.
- Our Fundholders granted nearly \$20 million to UJA-Federation of NY in FY 19, in addition to JCF's \$2 million annual gift to UJA.
- JCF announced \$985,000 in Special Gifts Fund grants in FY 19.

We invite you to delve into this report and learn more about the JCF philanthropic community, charitable giving trends, and the ways in which JCF Fundholders are collectively making our community and the world a better place.

Who are JCF's Fundholders?



More than 8,000 people participate in some capacity on the 4,000 funds at JCF. This includes Fundholders who oversee all aspects of the account, and Authorized Parties (family members, assistants, advisors) appointed by the Fundholders who have varying degrees of privileges to act on the fund. JCF allows Fundholders to name Successors to their fund and does not limit how many generations a fund can continue. Currently, there are Fundholders representing the third generation of their families.

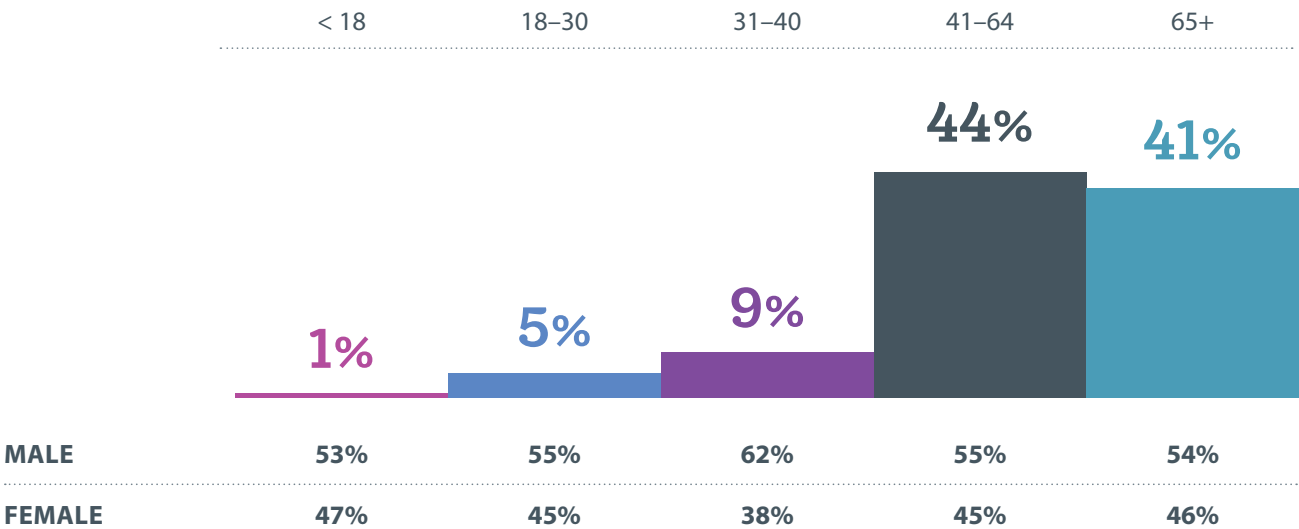
TOTAL NUMBER OF:

FUNDHOLDERS 5,494

AUTHORIZED PARTIES 2,871

JCF enables Fundholders to engage their families and advisors in their philanthropic journey.

FUNDHOLDERS' AGES



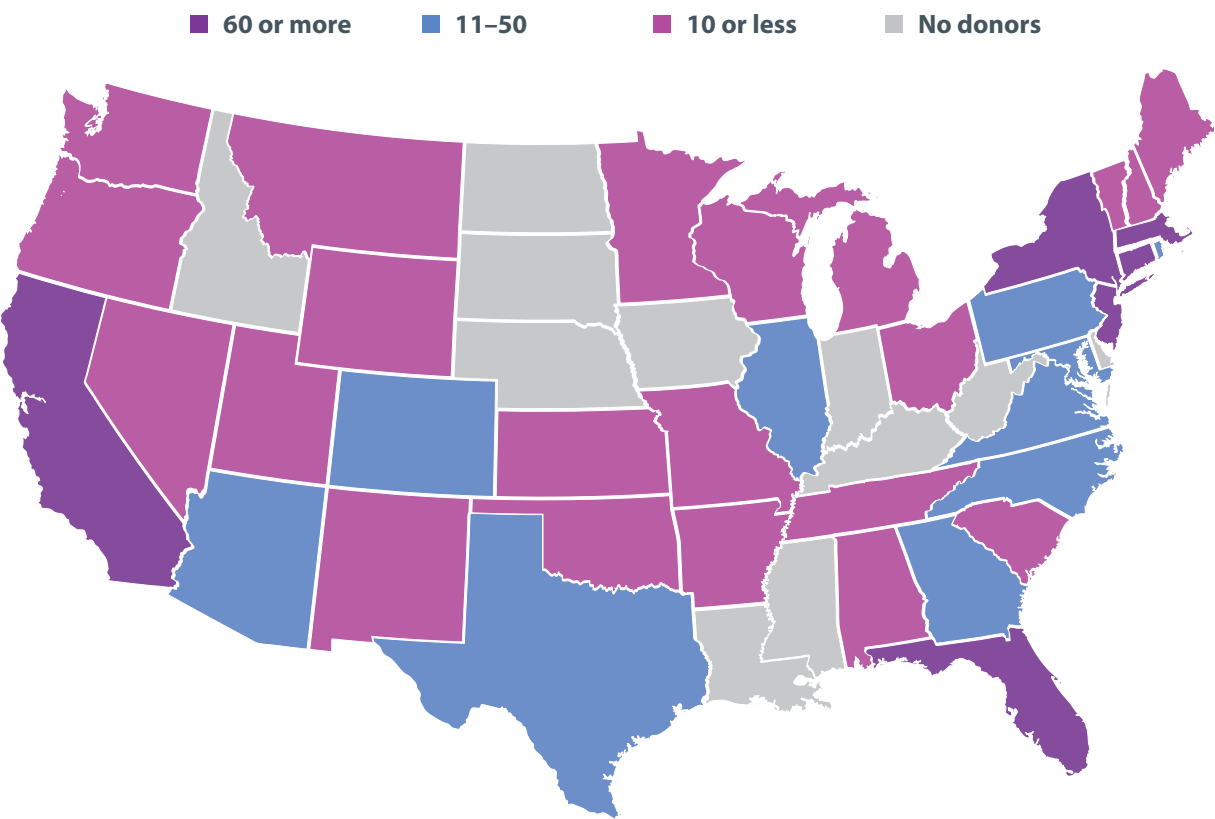
AVERAGE AGE AT OPENING A FUND

48

CURRENT AVERAGE AGE

60

GEOGRAPHIC LOCATION OF OUR FUNDHOLDERS



NEW YORK • 3,702
NEW JERSEY • 739
FLORIDA • 254
CONNECTICUT • 169
CALIFORNIA • 148
MASSACHUSETTS • 64
OTHER • 331

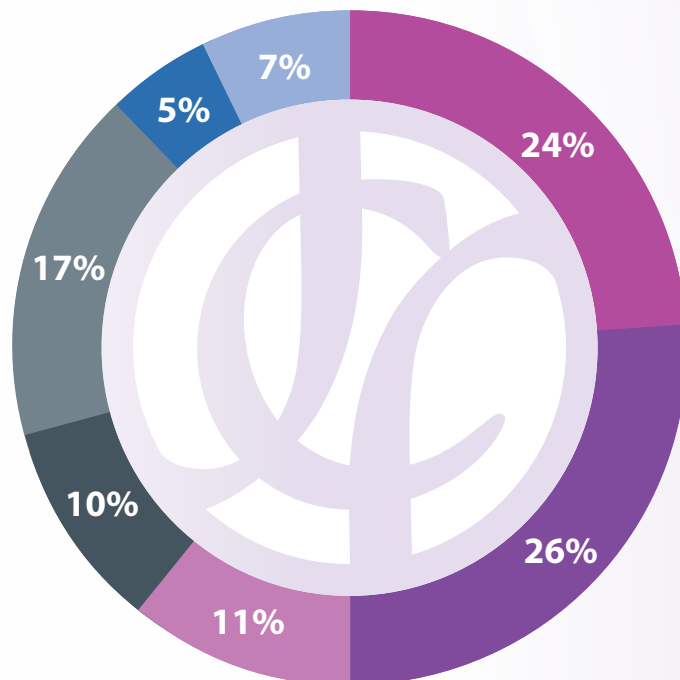
ISRAEL • 70
CANADA • 9
ENGLAND • 5
HONG KONG • 1
NETHERLANDS • 1
FRANCE • 1



- ▶ Manhattan | 1,832
- ▶ Westchester | 585
- ▶ Nassau County | 430
- ▶ Brooklyn | 411
- ▶ Queens | 129
- ▶ Bronx | 126
- ▶ Rockland County | 85
- ▶ Suffolk County | 48
- ▶ Staten Island | 16
- ▶ Other counties | 40

BREAKDOWN OF JCF FUNDS BY BALANCE

Philanthropists at **every level** use JCF for their charitable giving



■ UNDER \$5,000

■ \$5,000–\$25,000

■ \$25,001–\$50,000

■ \$50,001–\$100,000

■ \$100,001–\$500,000

■ \$500,001–\$1,000,000

■ \$1,000,001+

CHARITABLE ASSETS UNDER MANAGEMENT

2018–2019

\$2 Billion

Increased by over \$100 million



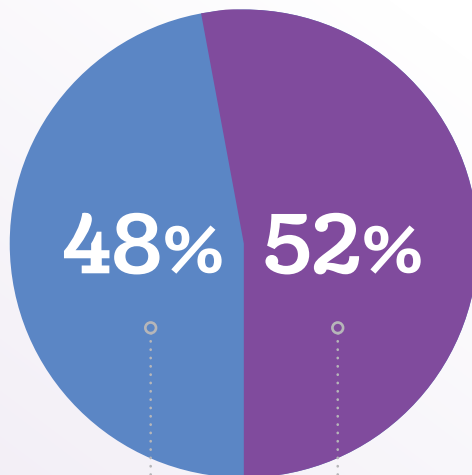
Many JCF Fundholders engage
with their fund as a couple or a family.

Giving brings families together.



NUMBER OF FUNDS
WITH **ONE**
FUNDHOLDER

1,888



NUMBER OF FUNDS
WITH **MULTIPLE**
FUNDHOLDERS

2,044

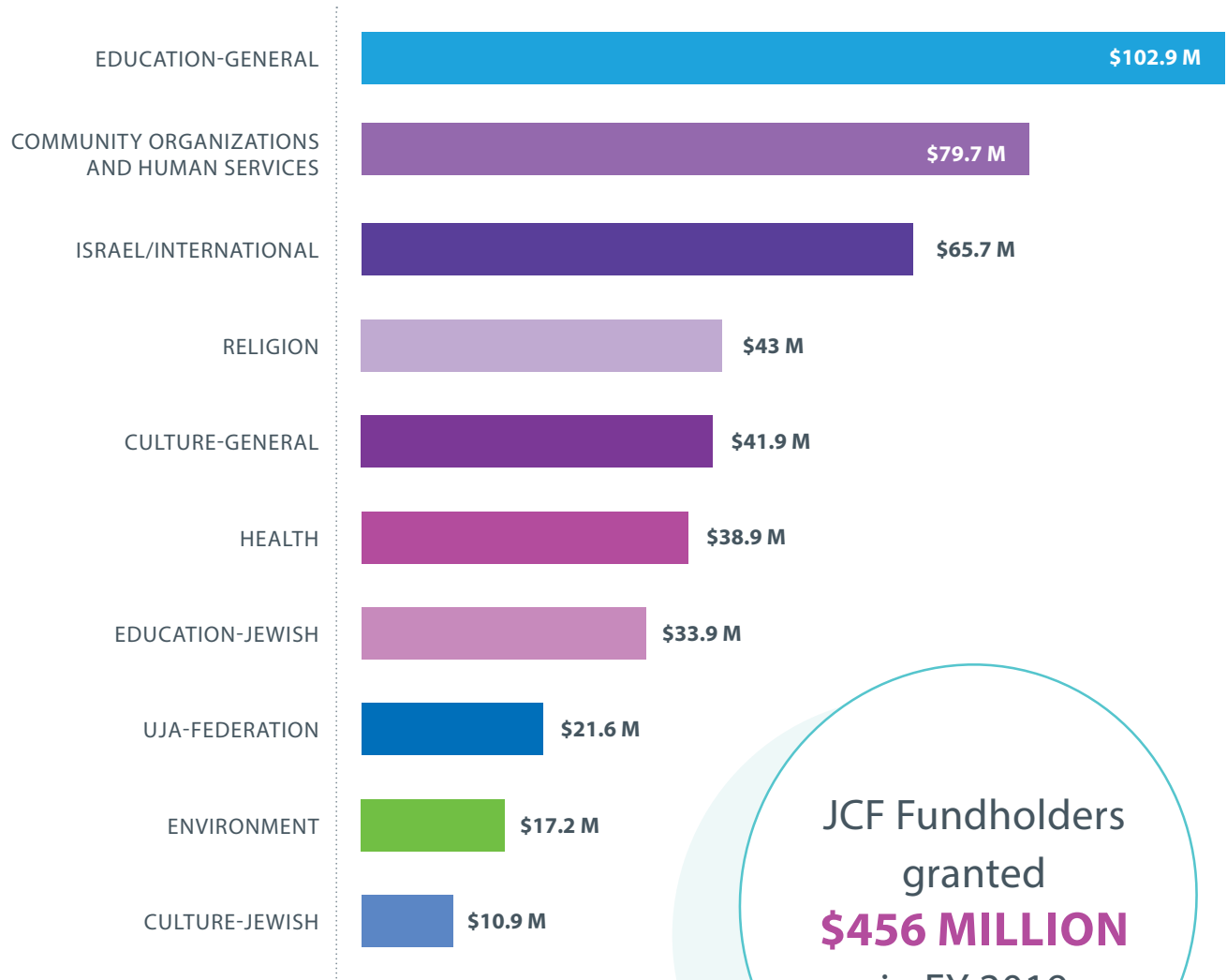
NUMBER OF FUNDS

4,000

MEDIAN ACCOUNT BALANCE

\$25,240

Which causes do JCF Fundholders support?



“ For a lot of people JCF is about convenience, but in addition, it makes me part of a giving community. ”

JENNY LYSS, JEWISH COMMUNAL LEADER AND JCF TRUSTEE

JCF Fundholders' Generosity

23%

JCF Fundholders distributed **23% of total assets** to charity in FY 19. JCF Fundholders are active grant-makers; they make an average of 16 grants each year per fund.



9,504

CHARITIES SUPPORTED IN 2019

↑ 288 since 2018



16

AVERAGE NUMBER OF GRANTS
PER FUND PER YEAR

AVERAGE GRANT AMOUNT

\$7,228



\$7,407

THREE-YEAR AVERAGE

MEDIAN GRANT AMOUNT

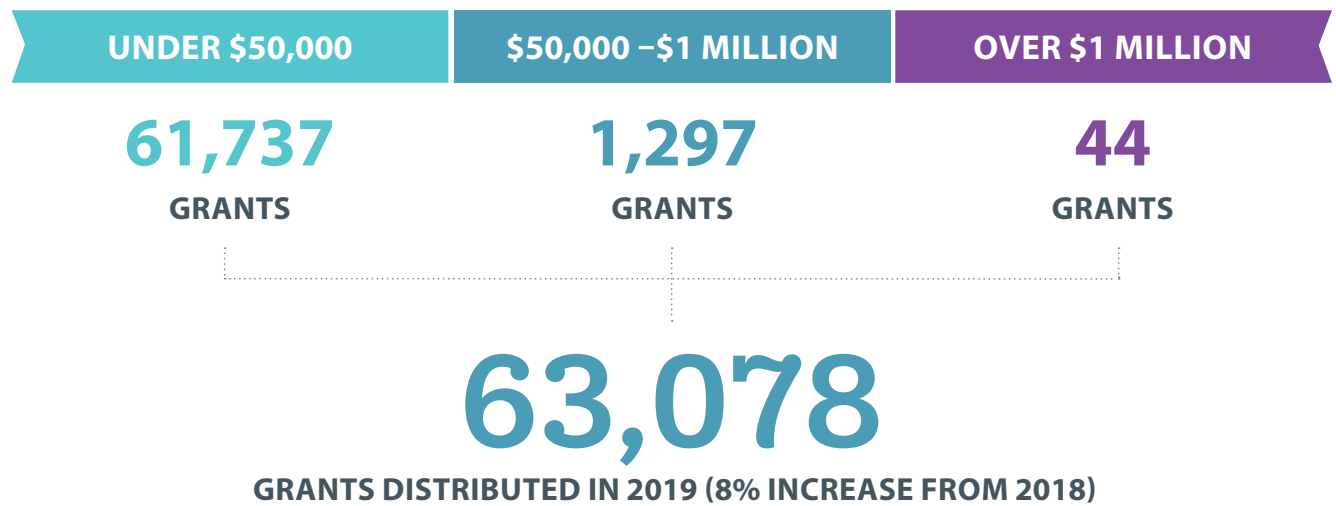
\$500



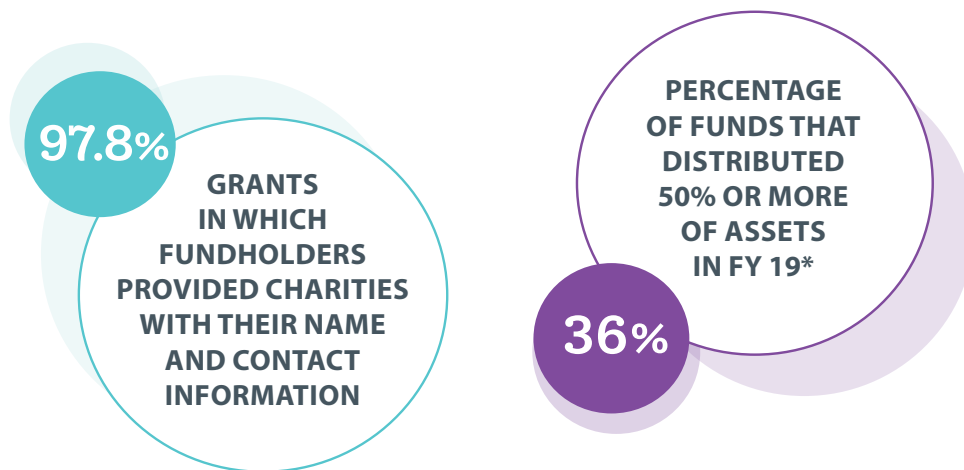
\$584

THREE-YEAR AVERAGE

JCF DISTRIBUTED A RECORD NUMBER OF GRANTS

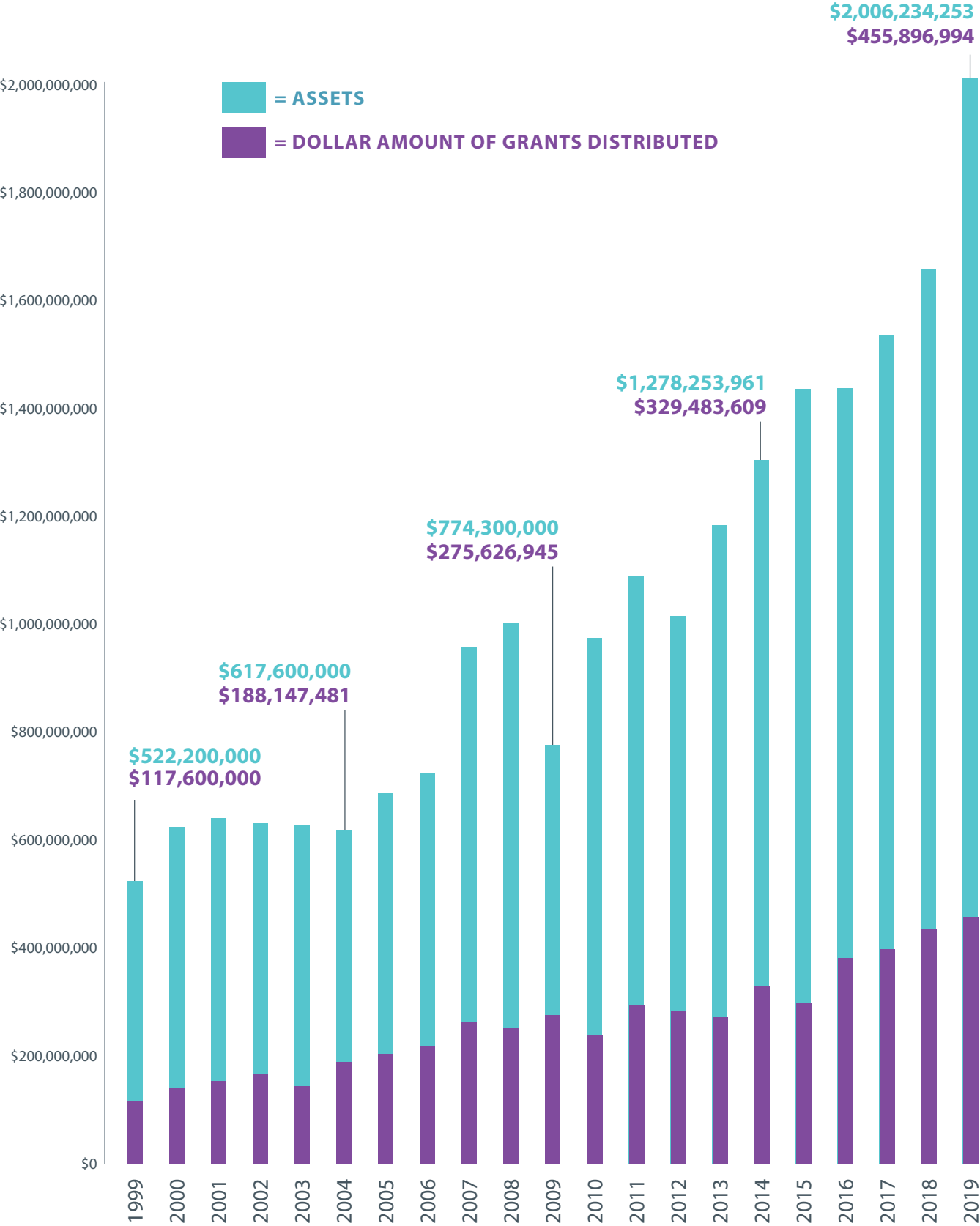


AS A COLLECTIVE...



*1,406 funds distributed 50% or more of their fund assets.

JCF'S ASSETS AND GRANT-MAKING HAVE INCREASED DRAMATICALLY IN THE PAST TWO DECADES



JCF FUNDHOLDERS' TOP CHARITIES IN FY 19

As measured by number and dollar amount of grants



COMMUNITY ORGANIZATIONS

Top two charities in terms of # of Grants

- ▶ UJA-Federation of New York, Inc.
- ▶ Sephardic Community Youth Center

Top two charities in terms of Dollar Amounts

- ▶ UJA-Federation of New York, Inc.
- ▶ Robin Hood Foundation



CULTURE-GENERAL

Top two charities in terms of # of Grants

- ▶ New York Public Radio
- ▶ WNET

Top two charities in terms of Dollar Amounts

- ▶ Museum of Modern Art
- ▶ Metropolitan Museum of Art



CULTURE-JEWISH

Top two charities in terms of # of Grants

- ▶ United States Holocaust Memorial Council
- ▶ Hillel: The Foundation for Jewish Campus Life

Top two charities in terms of Dollar Amounts

- ▶ Hillel: The Foundation for Jewish Campus Life
- ▶ Moishe House



EDUCATION-GENERAL

Top two charities in terms of # of Grants

- ▶ The Trustees of Columbia University in the City of New York
- ▶ New York University

Top two charities in terms of Dollar Amounts

- ▶ Brown University
- ▶ Johns Hopkins University



EDUCATION-JEWISH

Top two charities in terms of # of Grants

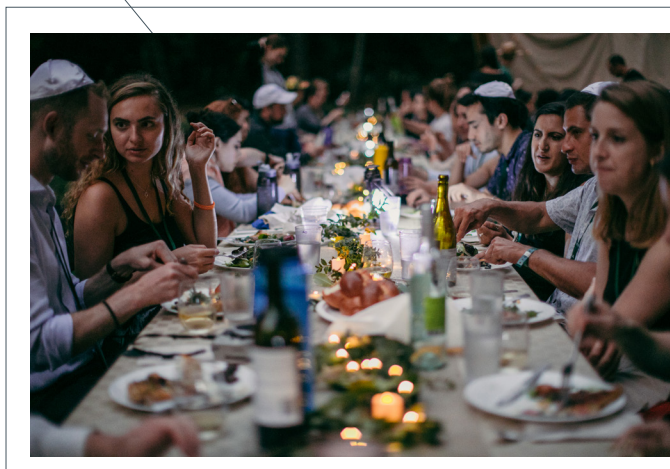
- ▶ Magen David Yeshivah
- ▶ Yeshivah of Flatbush

Top two charities in terms of Dollar Amounts

- ▶ Salanter Akiba Riverdale Academy (SAR)
- ▶ Magen David Yeshivah



Campers at the Marlene Meyerson JCC Manhattan's Camp Settoga. The JCC is a proud partner of UJA-Federation of New York.



Young professionals gathered together at a Moishe House to observe Shabbat and eat, laugh and enjoy one another's company.

The Central Park Conservancy's mission is to keep the most frequently visited urban park in the United States beautiful and well-maintained.



ENVIRONMENT

Top two charities in terms of # of Grants

- ▶ Central Park Conservancy, Inc.
- ▶ Natural Resources Defense Council, Inc.

Top two charities in terms of Dollar Amounts

- ▶ Natural Resources Defense Council, Inc.
- ▶ Central Park Conservancy, Inc.



HEALTH

Top two charities in terms of # of Grants

- ▶ SBH Community Service Network, Inc.
- ▶ Memorial Sloan-Kettering Cancer Center

Top two charities in terms of Dollar Amounts

- ▶ NYU Langone Hospitals
- ▶ Duke University Health System, Inc.



HUMAN SERVICES

Top two charities in terms of # of Grants

- ▶ Chai Lifeline
- ▶ The Sephardic Food Fund, Inc.

Top two charities in terms of Dollar Amounts

- ▶ Immigrant Justice Corps, Inc.
- ▶ Legal Hand, Inc.

ABOVE: Sephardic Bikur Holim Community Services Network is a mental health and social services agency based in Brooklyn that provides services for children and seniors; BELOW: Magen David Adom is Israel's ambulance, blood-services, and disaster-relief organization, serving as emergency medical first responders for the state's 9 million people.



INTERNATIONAL/ISRAEL

Top two charities in terms of # of Grants

- ▶ American Friends of Yad Eliezer, Inc.
- ▶ American Friends of Magen David Adom

Top two charities in terms of Dollar Amounts

- ▶ American Israel Education Foundation, Inc.
- ▶ American Jewish Joint Distribution Committee, Inc.



RELIGIOUS

Top two charities in terms of # of Grants

- ▶ Shaare Zion Congregation - Brooklyn, NY
- ▶ Union of Orthodox Jewish Congregations of America

Top two charities in terms of Dollar Amounts

- ▶ Congregation B'nai Jeshurun - New York, NY
- ▶ Congregation Ahavas Tzedakah V'Chesed, Inc.



TOTAL: \$456 MILLION

Giving Jewishly

When Fundholders choose JCF to facilitate their charitable giving, they are making a powerful statement about giving as a Jewish collective to a broad range of charitable causes in all sectors.

JCF Fundholders also benefit from “double bottom line” returns—their fees are reinvested in the Jewish community in the form of a \$2 million gift to the UJA-Federation of New York’s annual campaign, as well as Community Gifts to Jewish organizations from JCF’s endowment, the Special Gifts Fund.

Jewish Communal Fund Fundholders granted **\$19,625,055** to UJA-Federation of New York in 2019. In addition, JCF makes an unrestricted Community Gift of \$2 million each year to UJA. Since 1972, JCF has distributed approximately \$500 million to UJA.

43,971

FUNDHOLDERS’ GRANTS TO JEWISH ORGANIZATIONS IN FY 19, TOTALING \$191,528,730

11% INCREASE FROM LAST YEAR IN NUMBER OF GRANTS TO JEWISH CHARITIES



\$65.7 Million

GRANTED IN FY 19 TO ISRAEL/INTERNATIONAL

Since 2000, Jewish Communal Fund’s generous Fundholders have made

300,000+

GRANTS

to Jewish organizations, totaling \$2 Billion.

100,000+

GRANTS

to Israeli and other international charities, totaling \$722,750,953.

JCF REINVESTS IN THE JEWISH COMMUNITY

Since 1999, JCF's Endowment, the **Special Gifts Fund**, has granted more than **\$18 million** to Jewish charities in New York.



JCF'S SPECIAL GIFTS FUND GRANTS IN 2019 \$985,000

THIS YEAR'S SPECIAL GIFTS FUND GRANTEES INCLUDE:



\$275,000 to the *Sid Jacobson JCC* to provide a food bank staffed largely by individuals with special needs



\$250,000 for the *Henry Kaufmann Campground at Pearl River* to renovate swimming pools



\$120,000 to the *Edith and Carl Marks Jewish Community House of Bensonhurst* to expand a support program for Holocaust survivors with dementia



\$130,000 to support *Met Council* to increase its capacity to provide food to those in need



\$100,000 to *UJA-Federation of New York's Single Parent Initiative* to provide scholarships for day camp, day care and afterschool programs



\$110,000 to *Mishkon*, a therapeutic housing program of the Jewish Board, to provide an adaptive playground, a pool lift and increased lighting and security features.



JCF Social Impact Loan Program Surpasses \$1 Million Mark

Since the launch of the JCF Social Impact Loan Program in November 2018, JCF Fundholders have provided **more than \$1 million** in interest-free loans to Hebrew Free Loan Society (HFLS) borrowers in need. Every dollar invested in the JCF Social Impact Loan Program is now in the hands of HFLS borrowers.



TO DATE, THIS CAPITAL MADE POSSIBLE

113 loans

LOANS RANGE IN SIZE FROM

\$2,000 ➡ **\$50,745**

THE AVERAGE LOAN SIZE WAS

\$9,117



Milo, a beneficiary of the HFLS Special Education Bridge Loan.

What is the JCF Social Impact Loan Program?

For JCF Fundholders looking to maximize their local community impact, JCF offers the opportunity to help lower-income borrowers get back on their feet financially or invest in a brighter future. The JCF Social Impact Loan Program, an innovative partnership with Hebrew Free Loan Society (HFLS), allows current and prospective JCF Fundholders with accounts of \$100,000 or more to recommend that a portion of charitable assets go to interest-free loans to lower-income New Yorkers.

JCF Fundholders who choose to participate in the Social Impact Loan Program recommend that assets from their fund support HFLS's interest-free loans for two years. When the two-year term is up, 100% of the loan amount will be returned to the Fundholder's account to be granted out to charity or reinvested. Fundholders will not be charged administrative fees on funds lent to HFLS during the two years these funds are being used for interest-free loans. While there is no financial return on this investment, the social impact of these loans is considerable.

Access to safe, affordable credit is an important tool for financial stability and opportunity. Interest-free loans are not only a powerful modern expression of an ancient Jewish philanthropic practice, they are also one of the only options for lower-income borrowers seeking to improve their lives by investing in education, affordable housing or entrepreneurship.

"The loan from HFLS changed my son's life," Nora told us in an emotional interview. Her son, Milo, is on the autism spectrum and has ADHD. He had given up trying and was on the verge of getting kicked out of school. Nora found a school that not only could teach him, but also help him love learning again. Unfortunately, she couldn't afford the tuition. Everything changed for Milo when the HFLS approved an interest-free Special Education Bridge Loan. Now, Milo loves his new school. He is working at or above grade level, has joined the anime club and learned to play the piano. Although he still has his challenges, Milo is feeling much better about himself and his future. He has friends, laughs often and plans to become an engineer.



Anca and Dumitru wanted to adopt twin girls. When the costs associated were beyond their means, HFLS was there to help cover the fees and make their dreams come true.



Levi's passion for cutting hair began at the age of 16. HFLS' Small Business Loan provided him with the financial opportunity to open a barbershop in Crown Heights.

JCF Fundholders Contribute a Wide Range of Assets

\$746,787,816

TOTAL FOR FISCAL YEAR 2019

35%

**CASH
CONTRIBUTIONS**

36%

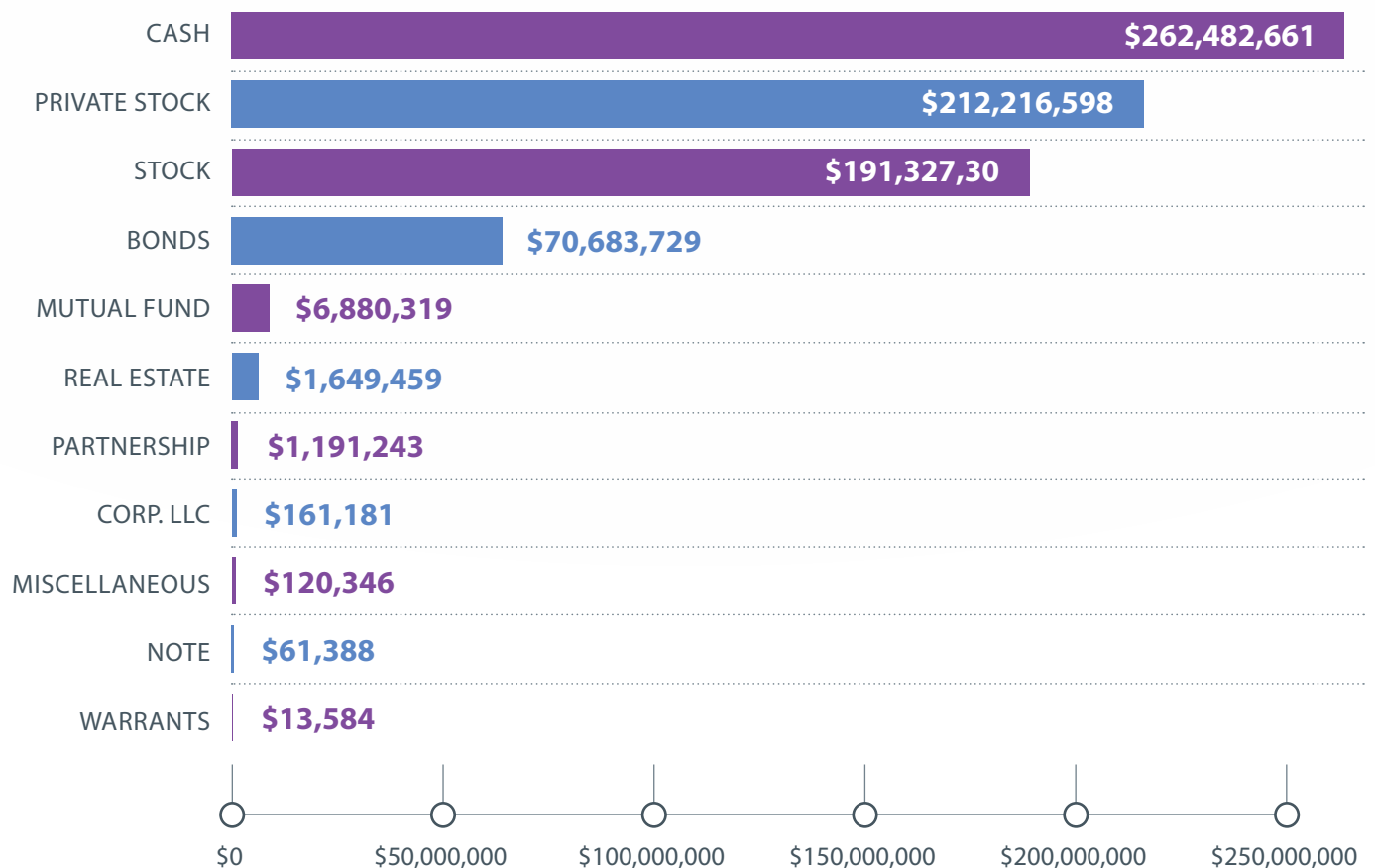
**PUBLICLY TRADED
SECURITIES**

29%

**COMPLEX ASSETS
(NON-PUBLICLY TRADED)**

CONTRIBUTIONS TO JCF INCREASED 65% SINCE FY 2018.

TOTAL CONTRIBUTION AMOUNTS BY GIFT TYPE





Message from our President, Zoya Raynes

JCF's Fundholders are extraordinarily generous, and therefore it is no surprise that FY 2019 was another record-breaking year. Our Fundholders recommended an unprecedented 63,000 grants—totaling \$456 million—to charities in every sector. As a collective, we distributed 23 percent of charitable assets under management—a payout rate of which we are very proud. It is our privilege to facilitate your grant-making, and to provide enhanced services, programs, and tools to help you give more strategically and achieve greater impact with your philanthropy. By choosing JCF to facilitate your charitable giving, you enable us to support local Jewish programs and initiatives that provide critical services for the elderly, children with special needs, and those who are struggling to make ends meet. Your grants and ours combine to make a difference.

JEWISH 
COMMUNAL
FUND We have a gift
for giving.™



JCF is the donor advised fund of the Jewish community.

Since 1972, the Jewish Communal Fund (JCF) has been helping people achieve their philanthropic and tax-saving goals simply and efficiently, with flexibility, full confidentiality, convenience, and personal service from a dedicated professional staff. JCF has grown to be one of the largest and most generous networks of Jewish philanthropists in the world.

jcfny.org