

Jewish Communal Fund

2020

GIVING REPORT



JEWISH COMMUNAL FUND

We have a gift
for giving.™

ABOUT JEWISH COMMUNAL FUND

Jewish Communal Fund (JCF) is the largest and most active network of Jewish funders in the nation. JCF facilitates philanthropy for more than 8,000 people associated with 4,100 funds, totaling \$2 billion in charitable assets. In FY 2020, our generous Fundholders granted out \$536 million—27% of our assets—to charities in all sectors.

The impact of JCF's network of funders on the Jewish community and beyond is profound. In addition to an annual unrestricted grant to UJA-Federation of New York, JCF's Special Gifts Fund (our endowment) has granted more than \$20 million since 1999 to support programs in the Jewish community at home and abroad, including kosher food pantries and soup kitchens, day camp scholarships for children from low-income homes, and programs for Holocaust survivors with dementia. These charities are selected with the assistance of UJA-Federation of NY.

For a simpler, easier, smarter way to give, look no further than the Jewish Communal Fund. **To learn more about JCF, visit jcfny.org or call us at (212) 752-8277.**

TABLE OF CONTENTS

1 Letter from the President and CEO

2 Introduction

3-6 The JCF Philanthropic Community

7-15 Grants

16 Contributions

17-28 Grants Listing

Letter from the President and CEO

JCF's extraordinarily generous Fundholders increased their giving to meet the tremendous needs that arose amidst the COVID-19 pandemic. In FY 2020, JCF Fundholders recommended more than 64,000 grants totaling a record-breaking \$536 million to charities in every sector. As a collective, we distributed 27 percent of charitable assets under management.

It is our privilege to facilitate your grant-making, and to continue to provide enhanced services, programs and tools to help you give more strategically and achieve greater impact with your philanthropy. By choosing JCF to facilitate your charitable giving, you further enable us to make an annual \$2 million unrestricted grant to UJA-Federation of New York, to support local Jewish programs and initiatives. In addition, JCF's endowment, the Special Gifts Fund, continues to change lives for the better, granting out more than \$20 million since 1999. Together, your grants and ours make a positive difference in many people's lives.

We are pleased to report that in fiscal 2020, JCF approved grants of \$1 million from the Special Gifts Fund to provide emergency Coronavirus response grants to assist UJA-Federation of NY, Met Council, Selfhelp, Dorot and other Jewish communal agencies helping the most vulnerable among us during this difficult time. Details about these grants and our collective impact as a network of over 8,000 Fundholders can be found on the following pages.

Here at JCF, we continue to work to bring you the best possible service and resources. To this end, we have collaborated with Goodnation to provide access to their philanthropic advisory platform and services. We are also pleased to announce that since the launch of the JCF Social Impact Loan Program, JCF Fundholders have provided nearly \$1.5 million in interest-free loans to low-income borrowers at Hebrew Free Loan Society. We have also added JLens to our social impact investment options, joining other social impact investment options on our platform such as Israel Bonds, VanEck Vectors Israel ETF and the TIAA-CREF Social Choice Bond Fund, as well as our ESG Pre-Set Portfolio.

JCF continues to be the country's largest and most active Jewish donor advised fund, managing \$2 billion in charitable assets for more than 4,100 funds. Thank you for your continued partnership and support.



Zoya Raynes
President



Susan F. Dickman
Executive Vice President & CEO

As the leading Jewish donor advised fund in the country, the Jewish Communal Fund (JCF) has a singular mission: to help our Fundholders get better at giving back.

For nearly 50 years, we've helped our Fundholders make their charitable giving simpler and more tax efficient—and along the way we have made a profound impact on our community.

In addition to our Fundholders' giving—totaling \$536 million in FY 20—JCF's endowment donates millions of dollars to Jewish communal institutions and charities.

We have a gift for giving.

In this fourth annual JCF Giving Report, we provide updated data and research capturing giving trends within the Jewish community, as seen from one of the longest-running donor advised funds in the country. Now entering its 49th year, JCF has played a critical role in facilitating charitable giving for a wide spectrum of Jewish philanthropists of varying means, ages, interests and religious affiliations.

Here are some statistics that shed light on the uniqueness that is the JCF funder community:

- JCF Fundholders make an average of 16 grants per fund per year, with a median grant amount of \$540.
- JCF Fundholders distributed 27% of charitable assets, as a collective, in FY 20.
- Nearly one-third of funds distributed 50% or more of the balance in their funds to charities in FY 20.
- The sectors that received the largest number of dollars from JCF Fundholders in FY 20 were education, community organizations/human services, and Israel (these same categories topped the chart in previous years, too).
- Our Fundholders made 44,000 grants (70% of all grants) to Jewish organizations, totaling \$250 million.
- Our Fundholders granted \$26.5 million to UJA-Federation of NY in FY 20, in addition to JCF's \$2 million annual gift to UJA.
- JCF announced \$1 million in Special Gifts Fund grants in FY 20 to support emergency coronavirus relief.

We invite you to delve into this report and learn more about the JCF philanthropic community, charitable giving trends, and the ways in which JCF Fundholders are collectively making our community and the world a better place.

Who are JCF's Fundholders?



More than 8,000 people participate in some capacity on the 4,100 funds at JCF. This includes Fundholders who oversee all aspects of the account, and Authorized Parties (family members, assistants, advisors) appointed by the Fundholders who have varying degrees of privileges to act on the fund. JCF allows Fundholders to name Successors to their fund and does not limit how many generations a fund can continue. Currently, there are Fundholders representing the third generation of their families.

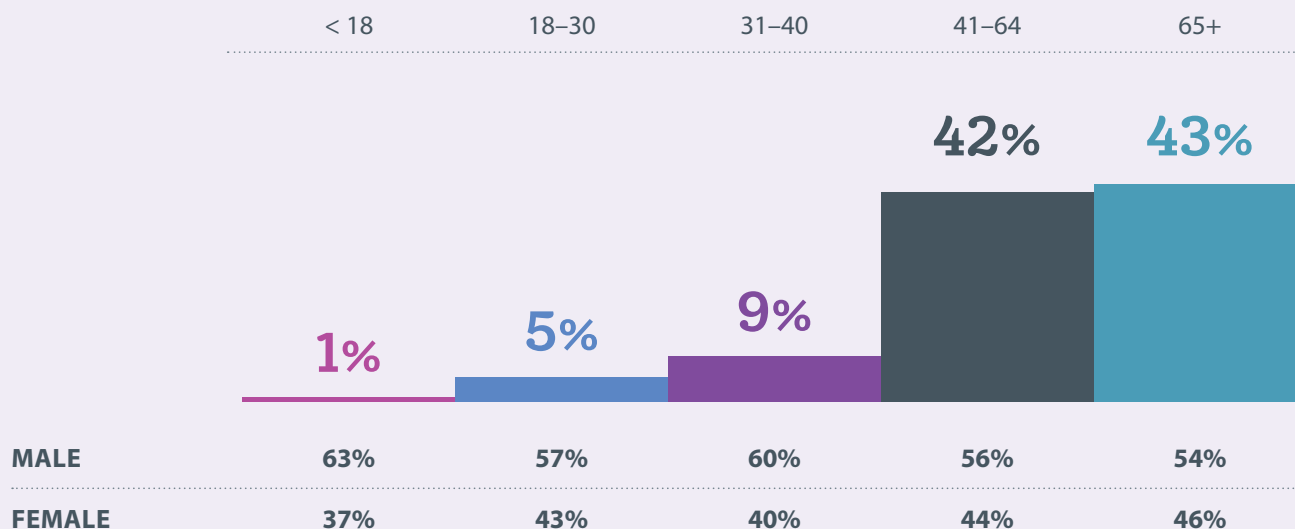
TOTAL NUMBER OF:

FUNDHOLDERS 5,652

AUTHORIZED PARTIES 2,481

JCF enables Fundholders to engage their families and advisors in their philanthropic journey.

FUNDHOLDERS' AGES



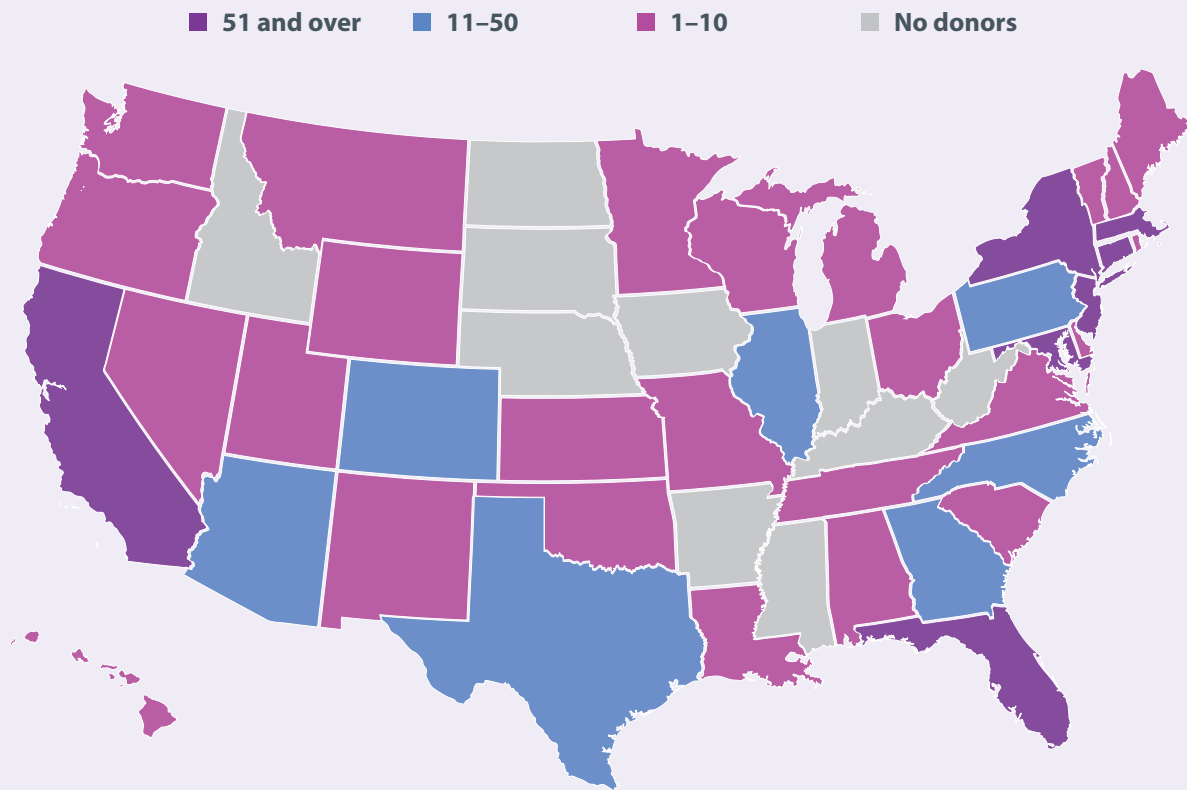
AVERAGE AGE AT OPENING A FUND

49

CURRENT AVERAGE AGE

61

GEOGRAPHIC LOCATION OF OUR FUNDHOLDERS



NEW YORK • 3,775
NEW JERSEY • 780
FLORIDA • 258
CONNECTICUT • 171
CALIFORNIA • 160
MASSACHUSETTS • 67
OTHER • 328

ISRAEL • 73
CANADA • 10
ENGLAND • 5
HONG KONG • 1
NETHERLANDS • 1
FRANCE • 1
WEST INDIES • 1



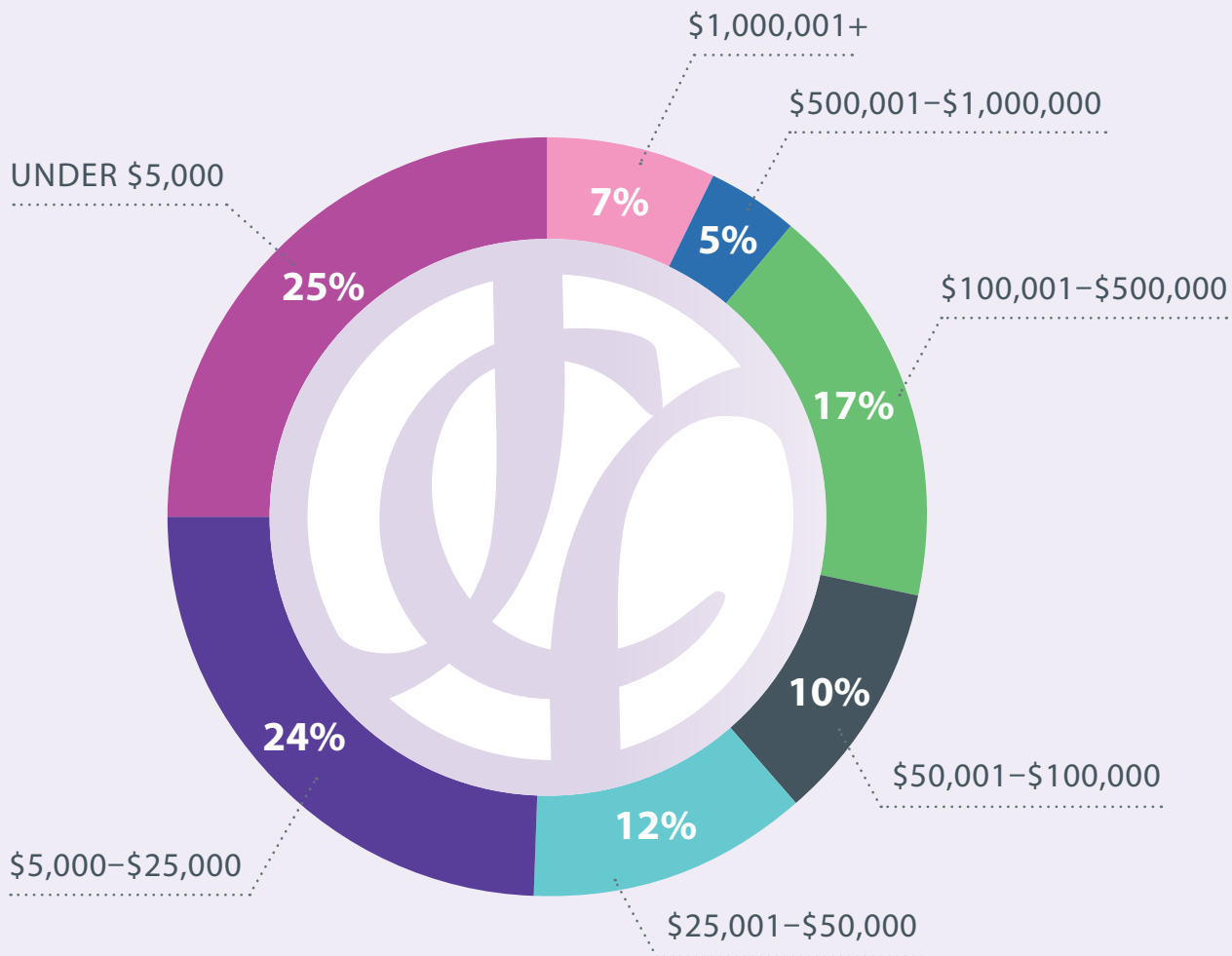
- ▶ Manhattan | 1,823
- ▶ Westchester | 596
- ▶ Nassau County | 453
- ▶ Brooklyn | 451
- ▶ Queens | 137
- ▶ Bronx | 126
- ▶ Rockland County | 83
- ▶ Suffolk County | 48
- ▶ Staten Island | 16
- ▶ Other counties | 42

CHARITABLE ASSETS UNDER MANAGEMENT

\$2 Billion

BREAKDOWN OF JCF FUNDS BY BALANCE

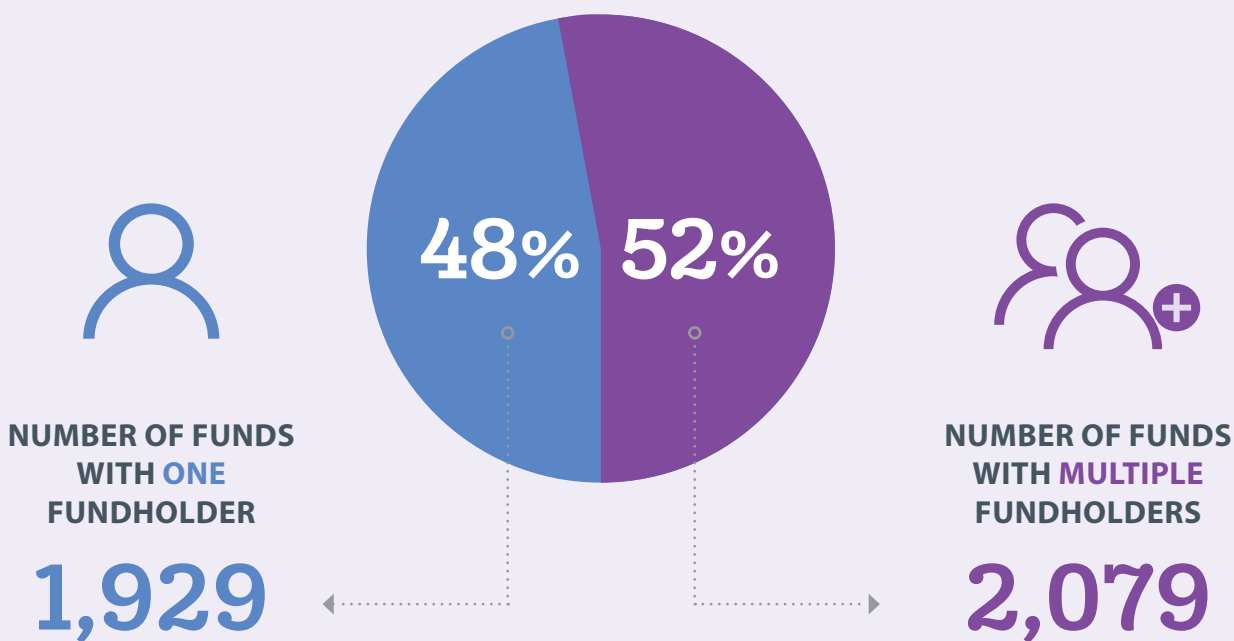
Philanthropists at **every level** use JCF for their charitable giving.





Many JCF Fundholders engage with their fund as a couple or a family.

Giving brings families together.



NUMBER OF FUNDS

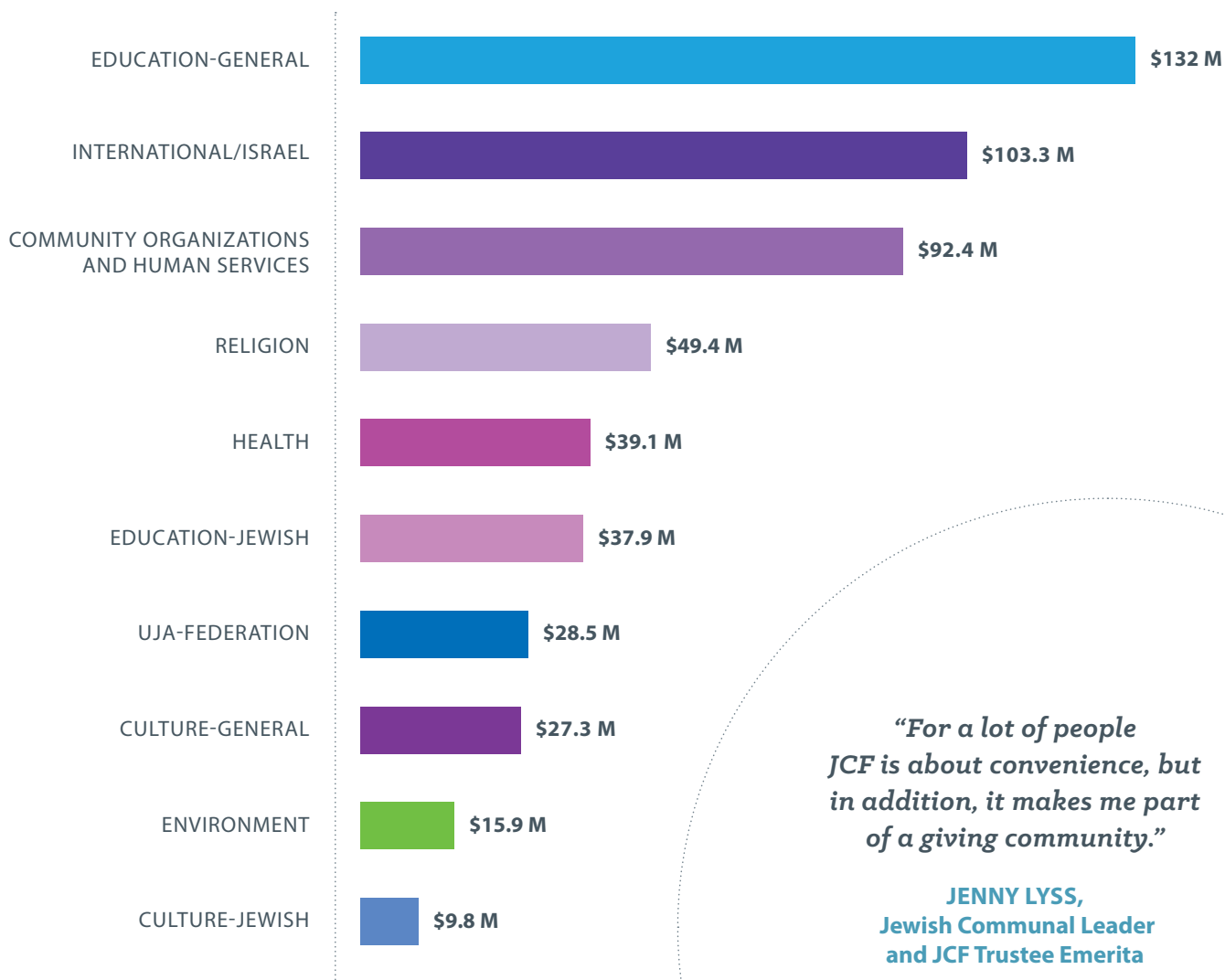
4,100

MEDIAN ACCOUNT BALANCE

\$25,828

Which causes do JCF Fundholders support?

JCF Fundholders granted
\$536 MILLION
in FY 2020



JCF Fundholders' Generosity



27%

JCF Fundholders distributed **27% of total assets** to charity in FY 20. JCF Fundholders are active grant-makers; they make an average of 16 grants each year per fund.



9,662

CHARITIES SUPPORTED
IN 2020



16

AVERAGE NUMBER OF GRANTS
PER FUND PER YEAR

AVERAGE GRANT AMOUNT

\$8,352



\$7,683

THREE-YEAR AVERAGE

MEDIAN GRANT AMOUNT

\$540



\$514

THREE-YEAR AVERAGE

JCF DISTRIBUTED A RECORD NUMBER OF GRANTS

UNDER \$50,000

62,601

GRANTS

\$50,000 – \$1 MILLION

1,537

GRANTS

OVER \$1 MILLION

50

GRANTS

64,188

GRANTS DISTRIBUTED IN 2020

92%
GRANTS
RECOMMENDED
ONLINE

"It's easy and convenient to recommend grants using JCF's secure online donor portal. In minutes we make several grants to our charities with just a few clicks."

ZOYA RAYNES
President of Jewish Communal Fund

AS A COLLECTIVE...

98%

GRANTS
IN WHICH
FUNDHOLDERS
PROVIDED CHARITIES
WITH THEIR NAME
AND CONTACT
INFORMATION

PERCENTAGE
OF FUNDS THAT
DISTRIBUTED
50% OR MORE
OF ASSETS
IN FY 20*

27%

*1,101 funds distributed 50% or more of their fund assets.

JCF FUNDHOLDERS' TOP CHARITIES IN FY 20

As measured by number and dollar amount of grants



COMMUNITY ORGANIZATIONS

Top two charities in terms of # of Grants

- ▶ UJA-Federation of New York, Inc.
- ▶ Deal Sephardic Youth Center, Inc.

Top two charities in terms of Dollar Amounts

- ▶ UJA-Federation of New York, Inc.
- ▶ Young Men's & Young Women's Hebrew Association d/b/a/ 92nd Street Y



CULTURE-GENERAL

Top two charities in terms of # of Grants

- ▶ New York Public Radio
- ▶ WNET

Top two charities in terms of Dollar Amounts

- ▶ Smithsonian Institution
- ▶ Children's Museum of Manhattan Growth Through Art & Museum Experience



CULTURE-JEWISH

Top two charities in terms of # of Grants

- ▶ United States Holocaust Memorial Council
- ▶ Hillel: The Foundation for Jewish Campus Life

Top two charities in terms of Dollar Amounts

- ▶ Nextbook, Inc.
- ▶ Hillel: The Foundation for Jewish Campus Life



EDUCATION-GENERAL

Top two charities in terms of # of Grants

- ▶ The Trustees of Columbia University in the City of New York
- ▶ New York University

Top two charities in terms of Dollar Amounts

- ▶ Johns Hopkins University
- ▶ Spence School



EDUCATION-JEWISH

Top two charities in terms of # of Grants

- ▶ Salanter Akiba Riverdale Academy (SAR)
- ▶ Magen David Yeshivah

Top two charities in terms of Dollar Amounts

- ▶ Salanter Akiba Riverdale Academy (SAR)
- ▶ Yeshiva University



A student at the full-day childcare program provided by the Edith and Carl Marks JCH of Bensonhurst, a proud network agency of UJA-Federation of NY. The Marks JCH launched an on-site program supporting the academic and enrichment needs of youth and working families during the COVID-19 crisis.



A student participating in MitzVote, Hillel International's non-partisan get-out-the-vote campaign that provides Jewish students with the tools to mobilize their campuses to vote and become civically engaged.

The Central Park Conservancy's mission is to keep the most frequently visited urban park in the United States beautiful and well-maintained.



ENVIRONMENT

Top two charities in terms of # of Grants

- ▶ Central Park Conservancy, Inc.
- ▶ Natural Resources Defense Council, Inc.

Top two charities in terms of Dollar Amounts

- ▶ Central Park Conservancy, Inc.
- ▶ Natural Resources Defense Council, Inc.



HEALTH

Top two charities in terms of # of Grants

- ▶ Renewal of Life, Inc.
- ▶ Planned Parenthood Federation of America, Inc. and A Torah Infertility Medium of Exchange (ATIME)

Top two charities in terms of Dollar Amounts

- ▶ New York Genome Center, Inc.
- ▶ NYU Langone Hospitals



HUMAN SERVICES

Top two charities in terms of # of Grants

- ▶ SBH Community Service Network, Inc.
- ▶ Chai Lifeline

Top two charities in terms of Dollar Amounts

- ▶ SBH Community Service Network, Inc.
- ▶ Citymeals-on-Wheels



INTERNATIONAL/ISRAEL

Top two charities in terms of # of Grants

- ▶ American Friends of Yad Eliezer, Inc.
- ▶ American Friends of Leket Israel, Inc.

Top two charities in terms of Dollar Amounts

- ▶ American Israel Education Foundation, Inc.
- ▶ International Rescue Committee, Inc.



RELIGIOUS

Top two charities in terms of # of Grants

- ▶ Union of Orthodox Jewish Congregations of America
- ▶ Park Avenue Synagogue - Elberon, NJ

Top two charities in terms of Dollar Amounts

- ▶ Fifth Avenue Synagogue
- ▶ Westchester Jewish Center



ABOVE: Kidney donor David B. with his recipient Solomon R. Photo courtesy of Renewal. BELOW: Leket Israel volunteer rescues cooked food for distribution to Israelis in need.



TOTAL: \$536,098,377

JCF provides \$1 million in Emergency Coronavirus Response Grants from its Special Gifts Fund

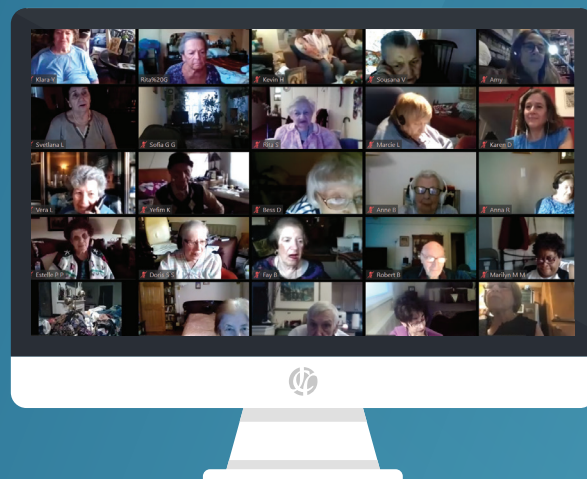
In the wake of the coronavirus outbreak, JCF acted quickly to provide much-needed funds from its endowment for food delivery, cash assistance and social services for low-income New Yorkers, including single parents and Holocaust survivors.

The JCF Special Gifts Fund Committee selected the grantee charities with the assistance of UJA-Federation of New York, which has been at the forefront of coronavirus (COVID-19) emergency response efforts, providing over \$52 million to help respond to the physical, mental and financial needs resulting from the coronavirus pandemic.

Since 1999, JCF's Endowment, the **Special Gifts Fund**, has granted more than **\$20 million** to Jewish charities in New York.

"[Dorot's University Without Walls] has been a wonderful respite from the awfulness of this time. It has helped remind me of the fullness of my life despite the current challenges."

– SUSAN





\$1 MILLION in SGF funding for **Coronavirus response efforts:**



\$500,000 to **Metropolitan Council on Jewish Poverty** to provide emergency food to low-income seniors



\$250,000 to **UJA-Federation of NY's Community Initiative for Holocaust Survivors** to provide emergency food, mental health services and transportation for home health aides, and to cover funeral expenses



\$150,000 to **UJA-Federation of New York** to provide 5,000 free Seder Meals To Go



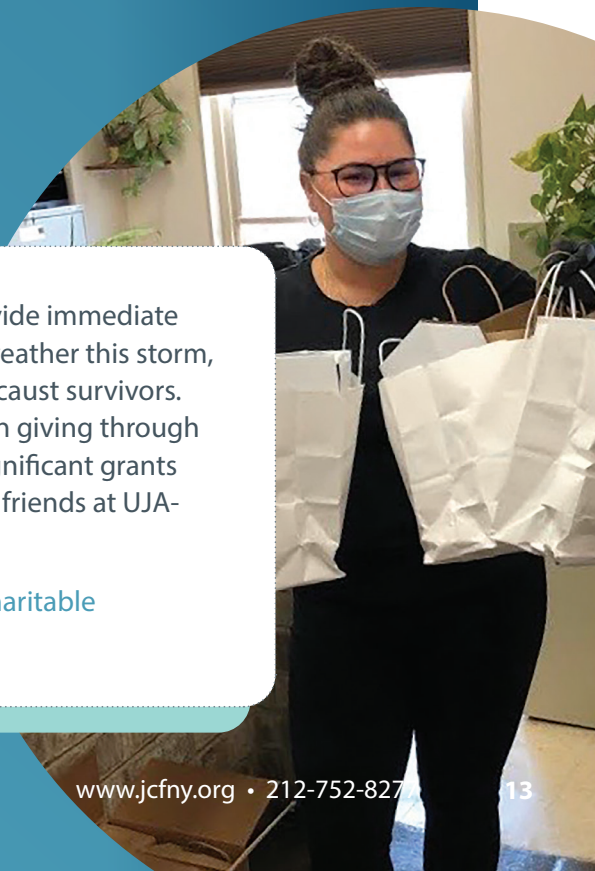
\$50,000 to **Dorot's University Without Walls**, which enables seniors to connect to educational programs using their telephone



\$50,000 to **UJA-Federation of NY's Single Parent Initiative** to provide emergency cash assistance

"It's our privilege and responsibility to step up and provide immediate support to vulnerable members of our community to weather this storm, including those facing food insecurity and elderly Holocaust survivors. We're grateful to our community of Fundholders who, in giving through JCF, have enabled JCF to act quickly and make these significant grants from its endowment with the help and expertise of our friends at UJA-Federation of New York."

DANIEL BLASER, Chair of Jewish Communal Fund's Charitable Distribution/Special Gifts Fund Committee



Giving Jewishly

When Fundholders choose JCF to facilitate their charitable giving, they are making a powerful statement about giving as a Jewish collective to a broad range of charitable causes in all sectors.

JCF Fundholders also benefit from “double bottom line” returns—their fees are reinvested in the Jewish community in the form of a \$2 million gift to the UJA-Federation of New York’s annual campaign, as well as Community Gifts to Jewish organizations from JCF’s endowment, the Special Gifts Fund.

Jewish Communal Fund Fundholders granted **\$26.5 million** to UJA-Federation of New York in 2020. In addition, JCF makes an unrestricted Community Gift of \$2 million each year to UJA. Since 1972, JCF has distributed approximately \$500 million to UJA.

44,253

FUNDHOLDERS’ GRANTS TO JEWISH ORGANIZATIONS IN FY 20, TOTALING \$249,854,466

30% INCREASE FROM LAST YEAR IN TOTAL FUNDS SENT TO JEWISH CHARITIES



\$105 Million

GRANTED IN FY 20 TO ISRAEL/INTERNATIONAL

↑ 60% SINCE 2019

Since 2000, Jewish Communal Fund’s generous Fundholders have made

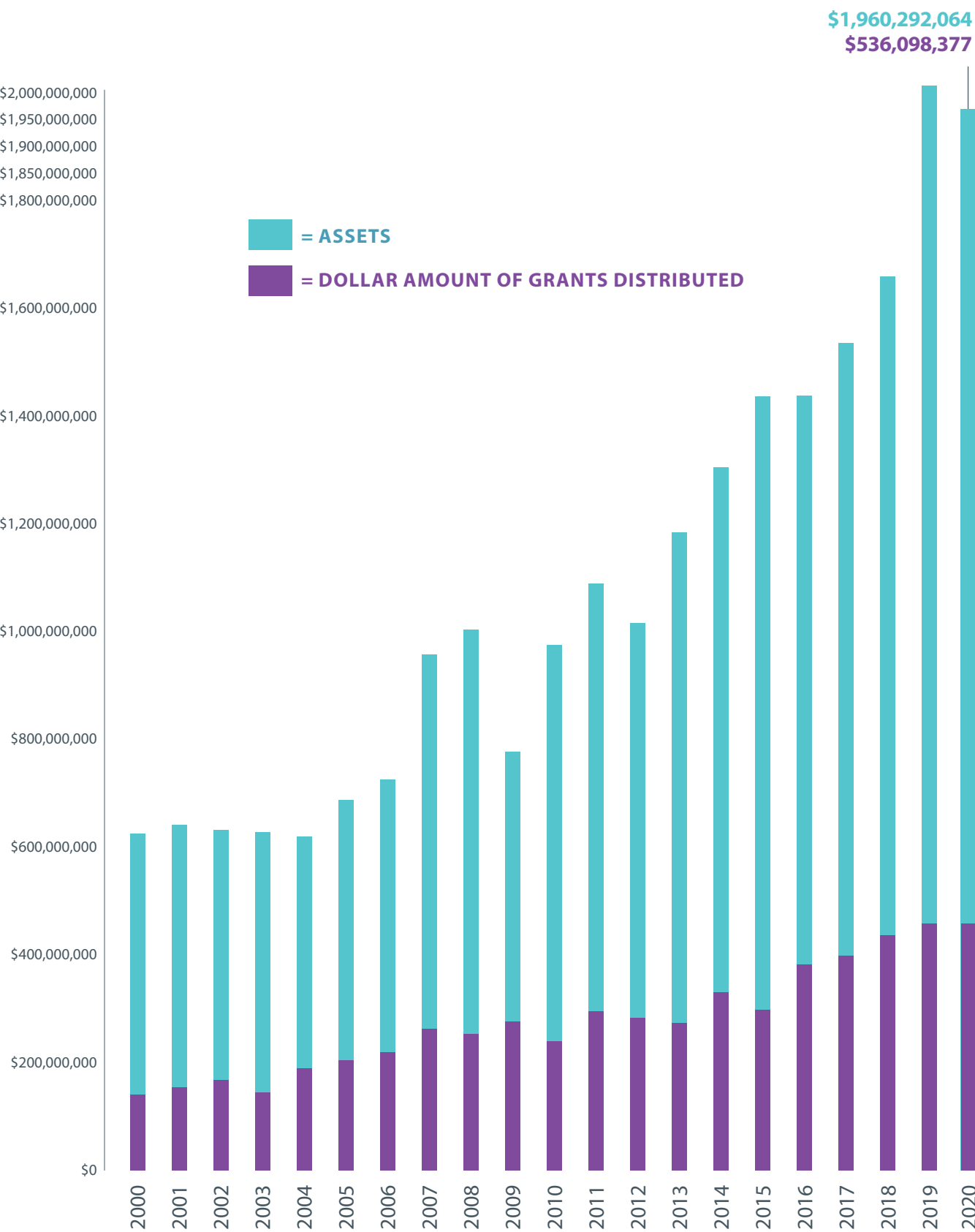
375,000+ GRANTS

to Jewish organizations, totaling \$2.1 Billion.

127,500+ GRANTS

to Israeli and other international charities, totaling \$827,557,900.

JCF'S ASSETS AND GRANT-MAKING HAVE INCREASED DRAMATICALLY IN THE PAST TWO DECADES

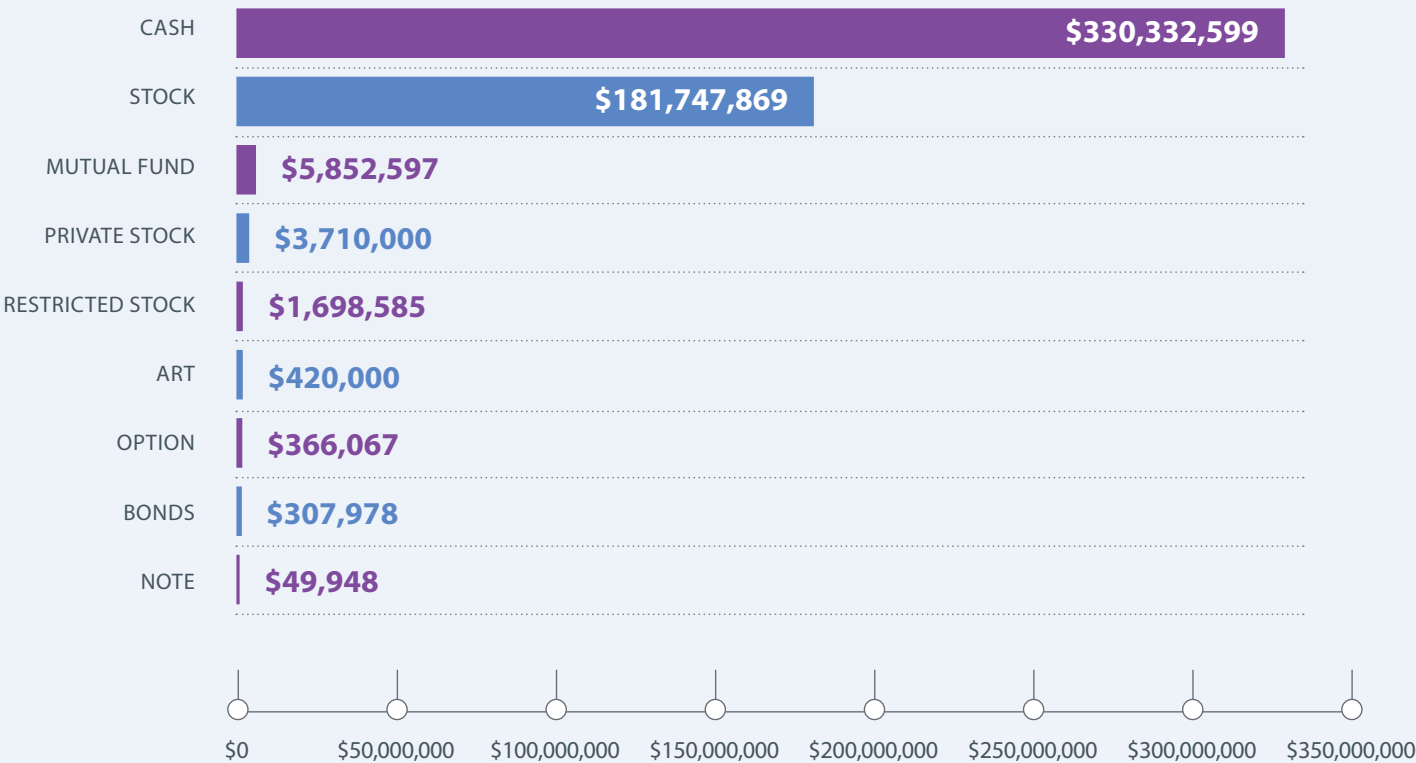


JCF Fundholders Contribute a Wide Range of Assets

\$524,485,643
TOTAL FOR FISCAL YEAR 2020



TOTAL CONTRIBUTION AMOUNTS BY GIFT TYPE



Schedule of Grants Made to Various Philanthropic Institutions

[YEAR ENDED JUNE 30, 2020]

ORGANIZATION	AMOUNT	ORGANIZATION	AMOUNT
18 Corp. d/b/a Ahavat Torah of Short Hills	60,000	American Enterprise Institute for Public Policy Research	60,000
929 English, Inc.	60,000	American Friends of Alyn Hospital, Inc.	76,035
A Better Balance	86,200	American Friends of Aram Soba	91,862
A Torah Infertility Medium of Exchange (ATIME)	182,334	American Friends of Ateret Cohanem, Inc.	73,278
A Wider Bridge	65,804	American Friends of Beit Hatfutsot	507,050
Abraham Joshua Heschel School	372,840	American Friends of Bet-El Yeshiva Center	67,280
Abyssinian Development Corporation	250,000	American Friends of B'Nai Levy Foundation	500,000
Achievement First, Inc.	225,000	American Friends of Eretz Hemdah, Inc.	64,070
Achiezer Community Resource Center, Inc.	69,420	American Friends of Eshel, Inc.	58,700
Actors Fund of America	136,958	American Friends of Itim, Inc.	142,756
ADM Capital Foundation, Inc.	50,000	American Friends of Keshet Yehudi, Inc.	50,970
Administrators of Tulane Educational Fund	52,500	American Friends of Leket Israel, Inc.	573,247
Adolescent Sarcoma Patients Intensive Rehab With Exercise, Inc.	100,000	American Friends of Lev Aharon	357,436
Afya Foundation of America, Inc.	355,951	American Friends of Livnot U'Lehibanot	54,110
Agahozo-Shalom Youth Village, Inc.	852,790	American Friends of Magen David Adom	2,958,839
Agudath Israel of America Community Services, Inc.	78,116	American Friends of Maoz-Seal, Inc.	60,000
Ahaba Ve Ahva Congregation	379,505	American Friends of Matan, Inc.	199,907
Ahavas Chaim, Inc.	509,750	American Friends of Meir Panim	65,460
Ahi Ezer Congregation	169,081	American Friends of Merkaz Chasidei Viznitz, Inc.	203,600
Albert Einstein College of Medicine, Inc.	954,380	American Friends of Mikdash Shaul	396,184
Aleph Institute	71,756	American Friends of Netiv Aryeh, Inc.	129,410
Aleph Society, Inc.	106,500	American Friends of Nishmat	139,640
All In Challenge Foundation	500,000	American Friends of Ogen, Inc.	377,750
All Stars Project, Inc.	75,297	American Friends of OR National Missions	75,000
Alliance for Middle East Peace, Inc.	89,500	American Friends of Puah	61,764
Alzheimer's Drug Discovery Foundation	349,780	American Friends of Rabbinical College of Telzstone, Inc.	80,500
America Achieves, Inc.	2,466,000	American Friends of Reuth Medical & Life Care Centers, Inc.	163,512
America Friends of Beit Midrash Harel	210,000	American Friends of Shalva Israel, Inc.	338,306
America-Israel Cultural Foundation, Inc.	81,950	American Friends of Shanti House, Inc.	71,300
American Academy in Rome	55,000	American Friends of Shehebar Sephardic Center, Inc.	223,930
American Associates of Ben-Gurion University of the Negev, Inc.	392,260	American Friends of Tel Aviv University, Inc.	1,728,326
American Association for the Advancement of Science	77,500	American Friends of the Alliance Israelite Universelle, Inc.	100,000
American Cancer Society, Inc.	99,957	American Friends of the Hebrew University, Inc.	1,655,354
American Civil Liberties Union Foundation, Inc.	321,396	American Friends of the Israel Museum	453,750
American Committee for Shaare Zedek Hospital in Jerusalem, Inc.	877,899	American Friends of the Israel Philharmonic Orchestra, Inc.	298,410
American Committee for the Weizmann Institute of Science, Inc.	663,960	American Friends of the Jordan River Village Foundation	76,650
American Council for an Energy Efficient Economy	465,000	American Friends of Tikvot	52,377
American Endowment Foundation	411,716		

ORGANIZATION	AMOUNT	ORGANIZATION	AMOUNT
American Friends of Tzohar	53,604	Beis Midrash of Queens	137,320
American Friends of Yad Eliezer, Inc.	2,195,485	Beit Hashem Nehalech, Inc.	225,800
American Friends of Yahad In Unum, Inc.	59,136	Beit Rabban Day School	426,350
American Friends of Yeshiva D'mir, Inc.	188,976	Belev Echad, Inc.	50,361
American Friends of Yeshivas Tiferes Yisroel	60,000	Ben Porat Yosef, Inc.	162,937
American Friends of Yeshivat Harei Yehuda, Inc.	50,360	Bend the Arc: A Jewish Partnership for Justice	111,130
American Friends of Yeshivat Hesder Sderot, Inc.	237,602	Bene Shaare Zion	60,593
American Friends of Yeshivat Imrei Datt, Inc.	63,501	Berkshire Pulse, Inc.	100,000
American Friends of Yirgun Y.R.A.	69,485	Bet Am Shalom Synagogue	52,925
American Israel Education Foundation, Inc.	6,585,680	Bet Midrash Ohel Torah	68,423
American Jewish Committee	1,201,462	Bet Yaakov of the Jersey Shore	98,824
American Jewish Historical Society	119,230	Bet Yaakov Orot Sarah, Inc.	274,247
American Jewish Joint Distribution Committee, Inc.	2,358,025	Beth Medrash Govoha of America	244,303
American Jewish World Service, Inc.	543,212	Beth Medrash of Kew Garden Hills	78,646
American Museum of Natural History	233,670	Beth-El Synagogue of New Rochelle, Inc.	72,324
American National Red Cross	145,887	Blair Academy	100,500
American Society for Technion-Israel Institute of Technology	882,438	Bloomington School of Music, Inc.	57,000
American Society for Yad Vashem, Inc.	109,710	Blue Card, Inc.	89,150
American-Italian Cancer Foundation	82,500	Blue School	150,000
AmeriCares, Inc.	142,311	Blythedale Children's Hospital	63,050
Amherst College Trustees	67,692	B'nai B'rith Youth Organization, Inc.	1,439,476
AMIT Children, Inc.	485,123	B'nai Torah Congregation	153,994
Anguilla Progressive Association of New York, Inc.	155,000	B'nos Bais Yaakov of Far Rockaway	62,521
Anshe Emeth Memorial Temple	123,237	Board of Jewish Education, Inc. d/b/a The Jewish Education Project	311,932
Anti-Defamation League of B'nai B'rith	581,287	Boca Jewish Center, Inc.	130,000
Appalachian Mountain Club	50,685	Boca Raton Regional Hospital Foundation, Inc.	111,629
Arawaka, Inc.	50,000	Boca Raton Synagogue, Inc.	70,066
Arbor Brothers, Inc.	100,000	Bonei Olam, Inc.	87,690
Archdiocese of New York	64,100	Boston Impact Initiative Fund	50,000
Areivim Philanthropic Group, Inc.	336,500	Boston University Trustees of Boston University	68,100
Ars Nova Theater I, Inc.	91,000	Boys & Girls Clubs of Sarasota County, Inc.	250,300
Artis Contemporary Israeli Art Fund, Inc.	266,000	Boys Town Jerusalem Foundation of America, Inc.	99,017
Artists Space, Inc.	89,583	Brady Center to Prevent Gun Violence	56,250
Ateret Torah Center	341,207	Brandeis University	381,233
Athletes For Israel, Inc.	160,000	Brearley School	152,350
Aubin Pictures, Inc.	140,000	Breast Cancer Research Foundation, Inc.	1,390,119
Auburn Theological Seminary	210,804	Broad Institute, Inc.	60,000
AVODAH: The Jewish Service Corps, Inc.	75,042	Broadway Cares-Equity Fights AIDS, Inc.	65,189
Bais Yaakov Ateres Miriam	52,260	Broadway Housing Communities, Inc.	59,500
Ballet Hispanico of New York	100,000	Brookings Institution	1,226,000
Bank of America Charitable Gift Fund	363,422	Brooklyn Academy of Music, Inc.	103,722
Bar Ilan University in Israel d/b/a American Friends of Bar-Ilan University	126,672	Brooklyn Bureau of Community Service	130,000
Bard College	162,150	Brooklyn Heights Synagogue	161,516
Barkai Foundation, Inc.	705,353	Brooklyn Jewish Xperience Congregation	87,282
Barnard College	385,790	Brown Hillel	299,610
Baruch College Fund	175,477	Brown University	508,800
Battery Foundation	100,000	Bucknell University	101,100
Bay Street Theatre Festival, Inc.	102,150	Businesses United in Investing Lending and Development	100,050
Bayith Lepleitot, Inc.	51,599	Calvin Coolidge Presidential Foundation, Inc.	77,500
Beginning With Children Foundation, Inc.	202,500	Camp Ramah in the Berkshires, Inc.	51,376
		Caramoor Center for Music & the Arts, Inc.	107,600

ORGANIZATION	AMOUNT	ORGANIZATION	AMOUNT
Care for Special Needs Children Foundation, Inc.	96,081	Chizuk Amuno Congregation	257,492
CaringKind	127,046	Choose Love, Inc.	52,500
Carlthorp School	50,000	Citizens' Budget Commission, Inc.	74,000
Carmeil Ha'ir International, Inc.	68,449	Citizens' Committee for Children of New York	75,750
Carnegie Hall Corporation	321,200	Citizens Committee for New York City, Inc.	65,750
Carnegie Mellon University	53,600	City Harvest, Inc.	242,159
Case Western Reserve University	220,550	Citymeals-on-Wheels	1,837,115
Cathedral Church of St. John the Divine	60,300	CLAL-The National Jewish Center for Learning and Leadership, Inc.	56,361
Center for American Progress	50,000	Clark University	365,600
Center for Curatorial Leadership	185,500	Clifton Cheder, Inc.	379,355
Center for Economic Democracy, Inc.	50,000	Coalfield Development Corporation	1,000,000
Center for Independent Thought, Inc.	100,000	Cold Spring Harbor Laboratory Association, Inc.	100,000
Center for Jewish Community Studies	50,080	Colel Chabad	446,548
Center for Jewish History, Inc.	185,106	Columbia/Barnard Hillel, Inc.	53,064
Center for Political Accountability	202,500	Combined Jewish Philanthropies of Greater Boston, Inc.	110,500
Center for Reproductive Rights, Inc.	131,800	Commentary, Inc.	58,700
Center for U.S. Global Leadership	150,000	Committee for Accuracy in Middle East Reporting in America, Inc. (CAMERA)	180,056
Central Fund of Israel	2,026,919	Committee to Protect Journalists, Inc.	76,600
Central Park Conservancy, Inc.	5,863,861	Common Cause Education Fund	104,546
Central Synagogue Congregation Ahavath Chesed Shaar Hashomayin	852,618	Community Assistance Fund, Inc.	98,798
Chabad at Dartmouth	52,251	Community Foundation for Southwest Washington	100,000
Chabad at Yale University, Inc.	110,000	Community Foundation of Jackson Hole	206,500
Chabad House Bowery, Inc.	119,125	Community Foundation of Western Nevada	242,893
Chabad Lubavitch of Greenwich, Inc.	62,160	Community Funds, Inc.	3,150,000
Chabad Lubavitch of the West Side, Inc.	107,748	Community Security Service	68,156
Chabad of Port Washington	89,301	Community Service Society of New York	128,586
Chabad of S. Francisco, Inc.	61,262	Community Synagogue of Tenafly and Englewood	69,415
Chabad of Southampton, Inc.	63,141	Conference of Presidents of Major American Jewish Organizations Fund, Inc.	204,600
Chabad of the Five Towns, Inc.	64,767	Congregation Ahavas Tzodkah V'Chesed, Inc.	189,640
Chabad of the Shore	78,781	Congregation Ahavat Shalom - Brooklyn, NY	124,620
Chabad of Tribeca	100,360	Congregation Ahavath Chesed	61,120
Chabad on Campus International, Inc.	155,588	Congregation Ahavath Torah	151,177
Chai Lifeline	987,177	Congregation Aish Kodesh	123,505
Chai Mitzvah, Inc.	52,300	Congregation Ansche Chesed - New York, NY	149,521
Chai4Ever, Inc.	71,505	Congregation Anshe Sholom	52,800
Chamber Music Society of Lincoln Center, Inc.	61,100	Congregation Anshei Shalom of Lawrence	63,000
Chapin School, Ltd.	1,271,500	Congregation Beth Aaron of Teaneck	98,477
Chapman University	200,000	Congregation Beth Abraham - Bergenfield, NJ	88,894
Charities Aid Foundation America	177,680	Congregation Beth Elohim	61,740
Charity Global, Inc.	100,121	Congregation Beth Torah - Brooklyn, NY	638,581
Chazak Vematz Congregation, Inc.	158,675	Congregation B'nai Jeshurun - New York, NY	775,637
Chebra Agudas Achim Chesed Shel Emeth (Hebrew Free Burial Association)	159,430	Congregation B'nai Yeshurun - Teaneck, NJ	66,639
Chelsea Piers Scholarship Fund	60,000	Congregation B'nei Torah of Lawrence	53,650
Chevra Shass of Empire Boulevard	205,000	Congregation Darchei Noam - Brooklyn, NY	51,535
Chevrat Pinto, Inc.	82,140	Congregation Darchei Torah	143,096
Chicago Chesed Fund, Inc.	294,184	Congregation Emanu-El of the City of New York	226,195
Child Mind Institute, Inc.	74,200	Congregation Emanu-El of Westchester	67,742
Children's Hospital of Los Angeles	76,000	Congregation Kehilas Jakob	54,226
Children's Museum of Manhattan Growth Through Art & Museum Experience	2,529,133	Congregation Kehilath Jeshurun	575,405
China Institute in America Incorporated	83,000		

ORGANIZATION	AMOUNT	ORGANIZATION	AMOUNT
Congregation Keter Sion	135,268	Drug Policy Alliance	150,150
Congregation Keter Torah a/k/a Northern Teaneck Synagogue Association	120,278	Duke University	441,460
Congregation Kol Ami - White Plains, NY	166,145	Duke University Health System, Inc.	1,333,683
Congregation Machane Chodosh, Inc.	50,180	Dwight-Englewood School	206,100
Congregation Machzeh Avruhom, Inc.	102,300	Earthjustice	106,960
Congregation Magen David of West Deal	198,763	East Hill Synagogue	73,316
Congregation Ohavei Torah - Lakewood, NJ	72,657	EB Research Partnership, Inc.	52,500
Congregation Ohel Yishak, Inc. - Allenhurst, NJ	500,533	Economic Club of New York	50,000
Congregation Or Zarua	155,388	Edible Schoolyard New York	100,500
Congregation Orach Chaim	86,580	Edith and Carl Marks Jewish Community House of Bensonhurst, Inc.	121,720
Congregation Rinat Yisrael	115,734	Edlavitch Jewish Community Center of Washington, DC, Inc.	131,180
Congregation Rodeph Sholom - New York, NY	770,628	Edmond J. Safra Synagogue of Deal, NJ	115,932
Congregation Rodfeh Zedek, Inc.	82,300	Educational Alliance, Inc.	76,640
Congregation Shaare Rahamim, Inc.	78,930	Educational Institute Oholei Torah of Brooklyn, Inc.	51,750
Congregation Shaari Tefiloh of Kings Highway	239,194	ELEM Youth in Distress, Inc.	85,117
Congregation Stolin Karlin	84,000	Emory University	53,750
Congregation Yagdil Torah	71,970	Empire Center for Public Policy, Inc.	151,500
Congregation Yeshiva Karlin Stolin of Monsey	117,700	Emunah of America, Inc.	190,284
Congregation Yeshiva of Telshe Alumni	164,682	Encounter Programs, Inc.	519,170
Congregation Yeshivas Lomza	54,898	Environmental Defense Fund, Inc.	61,368
Congregation Zichron Mordechai Shlomo	65,785	Environmental Working Group	75,530
Congregation Zichrone Binyamin	66,472	Epilepsy Foundation of America	200,724
Connecticut Public Broadcasting, Inc.	132,210	Equal Justice Initiative of Alabama, Inc.	155,430
Conservative Synagogue of Riverdale	62,510	ESD Global, Inc.	400,000
Contemporary Jewish Museum	50,000	Ethical Culture Fieldston School	92,000
Cooke School and Institute	67,000	Etzion Foundation, Inc.	959,516
Cornell University	5,135,023	Ezer M'zion, Inc.	51,003
Council on Foreign Relations, Inc.	57,250	Facing History and Ourselves National Foundation, Inc.	402,050
Crohn's & Colitis Foundation of America	156,346	Families Against Mandatory Minimums Foundation	195,000
Crown Heights Youth Collective	100,000	Federation for Jewish Philanthropy of Upper Fairfield County, Inc.	97,670
Curtis High School Foundation, Inc.	50,000	Federation of Jewish Communities of the C.I.S., Inc.	153,535
Daily Acts Organization	100,050	Feeding America	398,246
Dalton Schools, Inc.	77,600	Feeding Westchester, Inc.	214,261
Dana-Farber Cancer Institute, Inc.	320,740	Fidelity Investments Charitable Gift Fund	2,879,704
Daniella Moffson Foundation, Inc.	53,658	Fifth Avenue Synagogue	2,219,915
Darchei David Foundation	67,428	Film Forum, Inc.	51,000
Darim Online	135,000	Film Makers Collaborative Incorporated	75,000
Darkhei Noam	53,912	First Presbyterian Church in the City of NY	74,750
Davis Memorial Fund, Inc. d/b/a Leon Leif Children's Fund	300,177	FJC	329,910
Deal Sephardic Youth Center, Inc.	837,907	Flatbush Volunteers of Hatzolah, Inc.	371,076
Decoda, Inc.	50,000	Folksbiene Yiddish Theatre, Inc.	74,820
DEJ International Heritage Foundation, Inc.	71,992	Follow Your Dream	50,000
Democracy Now Productions, Inc.	158,750	Food Bank for New York City, Food for Survival	716,909
Denver Foundation	100,000	Foodbank of Santa Barbara County	60,000
Destiny Foundation	79,000	Footsteps, Inc.	317,241
Dia Center for the Arts, Inc.	384,300	Fordham University	191,583
Direct Relief International	145,235	Fortune Society, Inc.	100,575
Doctors Without Borders USA, Inc.	422,329	Forward Association, Inc.	58,660
DonorsChoose.org	117,754	Foundation for Defense of Democracies, Inc.	954,950
Dorot, Inc.	183,997	Foundation for Individual Rights in Education, Inc.	73,500
Drexel University	300,350		

ORGANIZATION	AMOUNT	ORGANIZATION	AMOUNT
Foundation for Jewish Camp, Inc.	858,908	Green Planet Films, Inc.	65,000
Foundation for National Progress	470,925	Greenwich Country Day School, Inc.	86,000
Foundation for Sephardic Studies, Inc.	213,272	Guadalupe Presbyterian Church	50,000
Foundation for the AIDS Monument	50,000	Guild Hall of East Hampton, Inc.	102,750
Fred Hutchinson Cancer Research Center	125,150	Gunnery, Inc.	236,600
Fresh Air Fund	709,745	Gurwin Jewish Healthcare Foundation, Inc.	56,537
Friends of Ahavat Shalom, Inc.	200,710	GVNG.ORG	86,400
Friends of Auschwitz-Birkenau Foundation	59,100	Hadassah the Women's Zionist Organization of America, Inc.	239,950
Friends of Bezalel Academy of Arts & Design, Inc.	119,800	Hands on Tzedakah, Inc.	483,600
Friends of Chabad of Hebron	51,095	Harford Community College Foundation, Inc.	838,000
Friends of ELNET	71,100	Harford Jewish Center, Inc.	415,000
Friends of Ir David, Inc.	91,360	Harvard University	9,646,171
Friends of Mosaic United	100,000	Hasbara Fellowships	92,040
Friends of Tel-Aviv Sourasky Medical Center, Inc.	500,100	Hasty Pudding Club the Institute of 1770	55,000
Friends of the Gateway School, Inc.	50,000	Hatzalah Emergency Medical Services of the Jersey Shore, Inc.	156,033
Friends of the Israel Defense Forces	867,186	Hatzalah of the Rockaways and Nassau County, Inc.	66,616
Friends of the Jewish Community of Tucuman, Inc.	57,000	Hatzolair Emergency Air Response Team, Inc.	72,616
Friends of the Virgin Islands National Park	105,000	Hawaii Community Foundation	100,000
Friends of United Hatzalah, Inc.	924,584	Hazon, Inc.	64,060
Friends Seminary	363,334	Health Care Without Harm	50,000
Frisch School	200,556	Healthy Kosher Foods Project	250,000
Fund for Israel's Tomorrow	96,670	Hebrew Academy of Long Beach	149,060
Fund for the Aged, Inc. d/b/a Jewish Home and Hospital Foundation	331,050	Hebrew Academy of Nassau County	61,667
Fund for the City of New York, Inc.	76,750	Hebrew Academy of the Five Towns and Rockaway	122,135
Gabriel Project Mumbai	91,000	Hebrew Free Loan Society, Inc.	683,052
Gary Klausner Chesed Fund, Inc. d/b/a Hand-in-Hand of Passaic-Clifton	93,652	Hebrew Home for the Aged - Riverdale, NY	90,180
Gateway to the Future, Inc.	58,750	Hebrew Home for the Aged at Riverdale Foundation, Inc.	60,622
Gateways Organization, Inc.	101,290	Hebrew Institute of University Heights d/b/a Hebrew Institute of Riverdale	214,690
Gay Men's Health Crisis, Inc.	1,032,530	Hebrew Institute of White Plains	110,466
Gemach Zichron Moshe, Inc.	50,112	Hebrew Union College-JIR	764,930
George Washington University	200,500	Hebron Fund, Inc.	68,389
Georgetown University	80,200	Heifer Project International, Inc.	75,900
Gesher Foundation, Inc.	65,776	Heterodox Academy	100,000
Giant Step Arts Ltd.	75,000	HIAS, Inc.	156,785
Giffords Law Center to Prevent Gun Violence	55,050	Hillel School - Ocean, NJ	847,169
Gift of Life Marrow Registry, Inc.	89,466	Hillel: The Foundation for Jewish Campus Life	1,538,320
Girard College Foundation	73,500	Hip Hop Caucus Education Fund	400,000
Girls' Town Or Chadash	52,703	Hofstra University	59,074
GiveDirectly, Inc.	70,626	Honeymoon Israel Foundation, Inc.	83,000
Giving Back Fund, Inc.	129,120	Hopewell Fund	153,600
Glynwood Center, Inc.	61,010	Horace Mann School	221,900
Goldman Sachs Charitable Gift Fund	100,000	Horizons for Homeless Children, Inc.	50,000
Good Plus Foundation, Inc.	147,000	Hospital for Special Surgery Fund, Inc.	2,853,400
Goucher College	201,000	Hot Tubes Development Cycling Team, Inc.	105,000
Grace Church School	164,500	Hotchkiss School	60,000
Graham-Windham	90,000	Hotel Trades Council and Hotel Industry Training Fund	321,000
Grand Street Settlement, Inc.	52,830	Hudson River Museum of Westchester	50,000
Great Neck Synagogue	60,331	Human Rights First	82,500
Greater Boston Food Bank, Inc.	54,000	Hunter College Foundation, Inc.	316,630
Greater Miami Hebrew Academy	118,100		
Greater Miami Jewish Federation	176,500		

ORGANIZATION	AMOUNT	ORGANIZATION	AMOUNT
Icahn School of Medicine at Mount Sinai	2,656,985	JDRF International	230,290
Idea School, Inc.	54,596	Jerusalem Foundation, Inc.	64,060
IfNotNow	66,600	Jewish Agency for Israel-North American Council	463,160
Ilan High School, Inc.	262,083	Jewish Board of Family and Children's Services, Inc.	129,000
Imagination Productions, Inc.	194,457	Jewish Book Trust, Inc.	55,000
Immigrant Justice Corps, Inc.	1,026,500	Jewish Campus Activities Board	172,572
ImpactIsrael, Inc.	152,798	Jewish Center - New York, NY	313,398
Indianapolis Public Schools Education Foundation, Inc.	507,000	Jewish Center of Atlantic Beach	285,054
INFACT d/b/a Corporate Accountability International	100,675	Jewish Center of the Hamptons	72,022
Innocence Project New Orleans	74,200	Jewish Child Care Association of New York d/b/a JCCA	127,358
Innocence Project, Inc.	162,450	Jewish Community Centers Association of North America	208,800
Innovation: Africa	71,428	Jewish Community Federation of San Francisco, the Peninsula, Marin and Sonoma Counties	104,250
INPRESENT Foundation, Inc.	325,000	Jewish Community Foundation of San Diego	160,000
Institute for Jewish Spirituality, Inc.	65,498	Jewish Community Relations Council of New York, Inc.	151,140
Institute for Justice	125,775	Jewish Electorate Institute	80,000
Institute for Market Transformation, Inc.	925,000	Jewish Family & Children's Service of Greater Mercer County	125,880
Institute for the Analysis of Global Security	75,000	Jewish Family & Children's Service of the Suncoast, Inc.	276,000
Institute for the Study of Global Anti-Semitism and Policy, Inc.	63,780	Jewish Family Service & Children's Center of Clifton-Passaic, Inc.	118,522
Integrated Reporting Foundation	400,000	Jewish Family Service of Stamford, Inc.	76,594
International Beit Din, Inc.	342,000	Jewish Federation Council of Greater Los Angeles	125,808
International Fellowship of Christians & Jews	52,387	Jewish Federation of Greater Metrowest NJ	197,447
International Medical Corps	62,930	Jewish Federation of Northern New Jersey, Inc.	112,888
International OCD Foundation, Inc.	633,334	Jewish Federation of Palm Beach County, Inc.	395,700
International Rescue Committee, Inc.	5,577,793	Jewish Federation of South Palm Beach County, Inc.	538,174
International Sephardic Educational and Cultural Center in Jerusalem	50,000	Jewish Funders Network	527,525
International Union Against Tuberculosis and Lung Disease, Inc.	530,000	Jewish Heritage Center of Queens and Long Island	50,620
Iona College	86,386	Jewish Learning Institute of San Francisco	50,000
Iranian American Jewish Federation	73,000	Jewish Museum	435,760
Irvine Hebrew Day School	1,251,550	Jewish National Fund - Keren Kayemeth Leisrael, Inc.	1,255,454
IsraAID US, Inc.	78,770	Jewish Orthodox Feminist Alliance, Inc.	108,364
Israel Cancer Research Fund, Inc.	321,445	Jewish Theological Seminary of America	462,645
Israel Education Resource	119,293	Jewish Women's Foundation of New York, Inc.	51,780
Israel Emergency Alliance	56,590	Jews United for Justice, Inc.	51,050
Israel Independence Fund	55,200	JGIVE-Friends of Asor Fund USA, Inc.	5,001,216
Israel Medical Fund Corp.	69,738	JJ Greenberg Institute for the Advancement of Jewish Life, Inc.	110,000
Israel on Campus Coalition	416,160	John F. Kennedy Medical Center Foundation, Inc.	300,000
Israel Policy Forum	197,622	Johns Hopkins University	43,213,348
Israel Scholarship Education Foundation	67,000	JOIN Israel, Inc.	59,930
Israel Special Kids Fund	92,582	Jonas Philanthropies, Inc.	390,500
Israel Tennis Centers Foundation, Inc.	148,035	Joseph Slifka Center for Jewish Life at Yale, Inc.	101,776
Israel-America Academic Exchange	155,000	JTA-MJL New Corp	432,452
iTrek, Inc.	394,050	Juilliard School	168,000
J Street Education Fund, Inc.	138,136	Jumpstart for Young Children, Inc.	54,200
Jackie Robinson Foundation, Inc.	82,500	Just Vision, Inc.	51,500
Jacob Burns Film Center, Inc.	59,580	Kansas City Girls Preparatory Academy	500,000
Jacobin Foundation Ltd.	175,000	Katahdin Productions, Inc.	50,000
JAFCO Children's Foundation, Inc.	125,580	KAVOD	55,180
JCC Global USA, Inc.	50,000		
JCC of Mid Westchester, Inc.	115,472		
JCC Rockland, Inc.	277,278		

ORGANIZATION	AMOUNT	ORGANIZATION	AMOUNT
Kehilat Romemu	592,458	Manhattan Class Company, Inc.	105,050
Keren Ahavas Chesed	96,690	Manhattan High School for Girls	105,260
Keren HaYeshivot Trust	149,833	Manhattan Institute for Policy Research, Inc.	94,600
Keren Yom-Tov, Inc.	262,135	Manhattan Jewish Experience Synagogue	141,712
Kesher Organization, Inc.	120,758	Marc Lustgarten Pancreatic Cancer Foundation	70,136
Keter Shlomo Foundation, Inc.	79,599	Masbia	119,013
Kids of Courage, Inc.	50,366	Maskeel El Dal Society, Inc.	78,483
Kisco Foundation, Inc.	100,000	Massachusetts Institute of Technology	1,551,550
Kolel Shomre Hachomos of Jerusalem, Inc.	55,684	Masters School	150,376
Kollel of the Jersey Shore, Inc. d/b/a Zichron Moshe	91,012	Mathematical Sciences Research Institute	100,000
Kollel Sharei Tzion Lmetzyonim	153,000	Mattan Basseter, Inc.	130,591
Lakewood Cheder School	98,066	Matthew Shepard Foundation	52,150
Landon School Corporation	52,500	Mayo Clinic Rochester	60,440
Lang School	225,000	Mazon, Inc.: A Jewish Response to Hunger	60,924
Larchmont Temple, Inc.	86,848	Mechon Hadar d/b/a Hadar Institute	979,516
Larchmont-Mamaroneck Hunger Task Force, Inc.	209,930	Media Matters for America	55,000
Larchwood Synagogue, Inc.	387,980	Melanoma Research Alliance Foundation	70,000
Lawyers for Children, Inc.	694,650	Memorial Sloan-Kettering Cancer Center	980,244
Lawyers for Good Government, Inc.	50,000	Men Having Babies, Inc.	65,000
LCBY, Inc.	106,000	Meor Yitzchok, Inc.	93,000
Le Zion B'Rina, Inc.	56,981	Mesivta of Long Beach	196,263
Leap, Inc.	50,000	Mesivta Yeshiva Rabbi Chaim Berlin	84,210
Legal Aid Society - New York, NY	50,872	Metropolitan Museum of Art	2,019,790
Legal Hand, Inc.	2,000,000	Metropolitan New York Coordinating Council on Jewish Poverty	975,348
Lehigh University	87,750	Metropolitan Opera Association, Inc.	249,915
Leo Baeck Institute, Inc.	62,506	Michael J. Fox Foundation for Parkinson's Disease Research	143,543
Lev Berel, Inc.	69,840	Middle East Peace Dialogue Network, Inc.	1,889,000
Lev L'achim, Inc.	64,994	Midrash Bet Nassi Mhhpt, Inc.	76,245
Lev Tamim, Inc.	95,350	Mikdash Eliyahu	279,875
Liberty Hill Foundation	100,000	Millbrook School	65,500
Liberty Science Center, Inc.	50,250	Millennial Action Project	100,000
Life Family Center, Inc.	72,320	Milstein Medical Asian-American Partnership Foundation, Inc.	65,000
Lilith Publications, Inc.	84,030	Milton Academy	61,000
Limudei Da'As, Inc.	137,363	Minchas Asher Foundation	153,370
Lincoln Center for the Performing Arts, Inc.	815,880	Minnesota Freedom Fund, Inc.	102,300
Lincoln Square Synagogue, Inc.	453,768	Mitzvah Man Foundation Corp.	70,849
Little Red School House, Inc.	191,667	Moise Safra Community Center, Inc.	388,675
Living Classrooms Foundation, Inc.	100,000	Moishe House	1,499,170
Loomis Institute	535,000	Monmouth Conservation Foundation	100,000
Louis D. Brandeis Center, Inc.	60,000	Monmouth Medical Center Foundation, Inc.	107,550
Lower East Side Tenement Museum	191,460	Montefiore Medical Center	221,190
Lubavitch Center Aventura South, Inc.	87,700	Moral Courage Project	50,000
Lubavitch on the Palisades	63,426	Morasha Olami, Inc.	108,500
Lucile Packard Foundation for Children's Health	57,500	Moriah School of Englewood	108,380
M. Y. Keren Hashluchim, Inc.	72,326	Morry's Camp, Inc.	63,104
M ² : The Institute for Experiential Jewish Education	690,000	MorseLife Foundation, Inc.	118,410
Mabas Fund, Inc.	153,029	Mount Holyoke College	57,000
Magen Abraham Yeshiva, Inc.	109,681	Mount Sinai Hospital	1,797,123
Magen David Synagogue	92,946	Mount Sinai Medical Center Foundation, Inc.	122,000
Magen David Yeshivah	1,242,675	Moving Traditions	213,300
Mahaiwe Performing Arts Center, Inc.	75,250		
Maimonides Fund Israel	12,500,000		
Maimonides Medical Center	130,720		

ORGANIZATION	AMOUNT	ORGANIZATION	AMOUNT
MSI-US	50,000	New York Immigration Coalition, Inc.	64,220
Muhlenberg College	101,050	New York Medical College	105,150
Municipal Art Society of New York	58,800	New York Public Radio	314,502
Museum of Chinese in the Americas	135,000	New York Shakespeare Festival	79,700
Museum of Contemporary Art - Los Angeles, CA	85,000	New York Theatre Workshop, Inc.	128,800
Museum of Jewish Heritage A Living Memorial to the Holocaust	200,519	New York Times Neediest Cases Fund	148,760
Museum of Modern Art	1,258,320	New York University	2,614,618
NAACP Legal Defense and Educational Fund, Inc.	70,098	New York Women's Foundation	72,855
Naaleh High School for Girls	51,000	New York-Presbyterian Fund, Inc.	277,680
Nagel Jewish Academy	53,600	Nextbook, Inc.	2,955,226
NARAL Pro-Choice America Foundation	113,096	Nonprofit Finance Fund	395,000
National Association for the Advancement of Colored People	2,012,850	Nonviolence International	145,000
National Jewish Outreach Program, Inc. d/b/a NJOP	108,691	North Carolina Museum of Art Foundation, Inc.	52,000
National League of Cities Institute, Inc.	100,000	North Miami Beach Kollel, Inc.	61,000
National Multiple Sclerosis Society	56,091	Northern Westchester Hospital Association	69,800
National Museum of American Jewish History	62,260	Northwell Health Foundation	409,099
National Partnership for Women and Families, Inc.	129,000	Northwestern University	428,050
National Philanthropic Trust	205,029	Norton Museum of Art, Inc.	232,000
National Psoriasis Foundation	150,960	NPR Foundation	100,000
National Ramah Commission, Inc.	95,560	NYU Langone Hospitals	3,134,178
National Redistricting Foundation	100,000	Oberlin Catalyst Community Development Corporation	50,000
National Society for Hebrew Day Schools a/k/a Torah Umesorah	149,846	Oberlin College	96,500
National Torah Initiative	100,000	Oceana, Inc.	100,180
National World War II Museum, Inc.	100,836	Ohel Avraham	69,264
National Yiddish Book Center	168,274	Ohel Children's Home and Family Services, Inc.	551,222
National Young Farmers Coalition	90,200	Ohel Yaacob Congregation a/k/a Ocean Avenue Synagogue	340,799
Natural Resources Defense Council, Inc.	3,114,096	Ohr Hatorah	55,434
Nefesh	51,270	Ohr Olam Corp.	203,300
Nefesh Yehudie, Inc.	167,880	Ohr Torah Stone Institutions of Israel	797,094
Neighbors Link Corp.	57,000	Oihel Nosson	160,000
Ner Israel Rabbinical College, Inc.	115,785	Oma's Jewish Center	50,000
Netanya Foundation, Inc.	75,000	On Site Opera, Inc.	52,000
New 42nd Street, Inc.	87,500	One Acre Fund	100,000
New Hampshire Charitable Foundation	256,250	Open Door Foundation, Inc.	77,416
New Heights Youth, Inc.	101,650	Oratorio Society of New York	66,500
New Israel Fund	534,169	Organization for the Resolution of Agunot, Inc.	60,418
New Jersey League of Conservation Voters Education Fund	120,000	ORT America, Inc.	54,852
New Venture Fund	235,000	Oshman Family Jewish Community Center	69,400
New Voices Pittsburgh, Inc.	50,000	Ossining Children's Center, Inc.	114,300
New York and Presbyterian Hospital	413,568	Our Climate Education Fund	55,800
New York Board of Rabbis, Inc.	64,614	P.E.F. Israel Endowment Funds, Inc.	11,163,921
New York Botanical Garden	503,323	Paamonim	58,302
New York Cancer Center, Inc.	242,620	Pachamama Alliance	100,000
New York City Center, Inc.	243,800	Palm Beach Orthodox Synagogue, Inc.	131,250
New York City Health and Hospitals	51,000	Pal-O-Mine Equestrian, Inc.	106,500
New York City Police Foundation, Inc.	170,600	Pan Massachusetts Challenge Trust	340,418
New York Foundation for the Arts, Inc.	315,450	Pardes Institute of Jewish Studies North America, Inc.	2,293,699
New York Genome Center, Inc.	5,000,000	Park Avenue Synagogue - Elberon, NJ	570,368
New York Historical Society	368,090	Park Avenue Synagogue - New York, NY	780,226
		Park East Synagogue	115,530

ORGANIZATION	AMOUNT	ORGANIZATION	AMOUNT
Parker Family Health Center, Inc.	125,000	Recess Activities	84,350
Partners in Action, Inc.	50,500	Recorded Talmud	85,000
Partners In Health	70,700	Reed Institute	100,000
Partnership for Public Service, Inc.	50,000	Refuah Helpline, Inc. d/b/a Refuah Resources	114,780
Passages America Israel, Inc.	306,225	Regents of the University of Michigan	539,280
Passaic Hebrew Institute	309,301	Reimagine, Inc.	227,550
PeaceWorks Network Foundation	1,337,800	Reinvent Albany	50,000
Peer Health Exchange, Inc.	115,000	Religious Zionist Youth Movement - Bnei Akiva of the US & Canada, Inc.	275,010
Performance Zone, Inc. d/b/a The Field	65,500	Renewal of Life, Inc.	369,690
Philharmonic-Symphony Society of New York, Inc.	183,450	Repair the World, Inc.	257,670
Philip Evans Scholarship Foundation	50,000	Resources for Children with Special Needs, Inc. d/b/a INCLUDEnyc	50,300
Physicians for Human Rights, Inc.	84,636	Resources for the Future, Inc.	200,750
Pinelands Preservation Alliance, Inc.	300,000	Results for America	5,053,000
Pioneer Works Art Foundation	62,500	Reut USA	79,420
Planned Parenthood Federation of America, Inc.	643,071	Rippowam Cisca School, Inc.	86,000
Planned Parenthood Hudson Peconic, Inc.	177,648	Riverdale Country School, Inc.	385,250
Planned Parenthood League of Massachusetts, Inc.	50,000	Riverdale Friends of Hatzala, Inc.	52,446
Planned Parenthood of Greater New York, Inc.	248,110	Riverdale Jewish Center	414,812
Planned Parenthood of Nassau County, Inc.	77,250	Robert W. Woodruff Arts Center, Inc.	62,500
Planned Parenthood of Northern, Central and Southern New Jersey, Inc.	57,000	Robin Hood Foundation	1,566,078
Planned Parenthood of South Florida and the Treasure Coast, Inc.	518,250	Rockefeller Family Fund, Inc.	1,000,000
Planned Parenthood of the Rocky Mountains, Inc.	50,000	Rockefeller Philanthropy Advisors, Inc.	1,030,000
Prep for Prep	74,250	Rockefeller University	304,750
PRI Association	100,000	Rofeh Cholim Cancer Society, Inc.	66,513
Princeton Hillel, Center for Jewish Life	102,190	Roger Williams University	70,000
Prizmah: Center for Jewish Day Schools, Inc.	1,090,000	Ronald McDonald House of New York, Inc.	54,600
Project EzraH Needs, Inc.	173,118	Roundabout Theatre Company, Inc.	565,950
Project HOPE - The People-to-People Health Foundation, Inc.	58,876	Ruth and Norman Rales Jewish Family Services, Inc.	130,000
Project Torah And Biblical Scholarship, Inc.	122,040	SAFE Foundation, Inc.	355,240
Propel Network, Inc.	158,001	Sag Harbor Cinema Arts Center, Inc.	56,000
Protect Democracy Project	175,000	Salanter Akiba Riverdale Academy (SAR)	2,323,532
Providence Hebrew Day School	75,036	Salk Institute for Biological Studies	100,000
PS1 Contemporary Art Center, Inc.	70,000	Salvation Army National Corp.	67,191
Public Art Fund, Inc.	603,222	Samuel Field YM & YWHA, Inc.	189,000
Public Policy and Education Fund	57,500	Samuel Waxman Cancer Research Foundation	59,078
Publicolor, Inc.	73,500	San Diego Museum of Art	101,500
Purchase College Foundation	206,900	Santa Barbara Cottage Hospital Foundation	75,000
PushBlack	55,000	SASB Foundation	1,000,000
Queens College Hillel	82,880	Save the Children Federation, Inc.	199,700
Queens Community House, Inc.	50,500	SBH Community Service Network, Inc.	1,993,795
Quentin Road Synagogue	91,200	Scenic Hudson, Inc.	340,150
Rabbi Isaac Elchanan Theological Seminary	450,480	Scholarship America, Inc.	73,200
Rabbi Meir Baal Haness Sharei Zion, Inc.	85,248	School of American Ballet, Inc.	175,000
RAJE-USA, Inc.	105,216	Schwab Charitable Fund	369,816
Ramapo for Children, Inc.	94,130	Screen Actors Guild Foundation	50,000
Ramaz School	483,340	Scripps Research Institute	56,200
Raymond F. Kravis Center for the Performing Arts, Inc.	146,600	Second Harvest Food Bank Santa Cruz County	50,000
Reach for the Stars Learning Center	148,587	Securing America's Future Energy Foundation	460,000
ReadWorks, Inc.	55,000	Seeds of Peace, Inc.	87,246
Reason Foundation	52,000	Sefaria, Inc.	358,161
		Selfhelp Community Services Foundation, Inc.	78,000

ORGANIZATION	AMOUNT	ORGANIZATION	AMOUNT
Sephardic Community Alliance	102,758	Statue of Liberty-Ellis Island Foundation, Inc.	501,000
Sephardic Community Youth Center	676,191	Stephen Gaynor School	64,500
Sephardic Congregation of Long Branch d/b/a Helping Hearts - Lev Ozer	214,217	Steve's Camp at Horizon Farms, Inc.	57,600
Sephardic Ctr for Rabbinical & Secular Studies, Inc. d/b/a A. Franco Sephardic Womens T.S.	494,701	Stone Barns Restoration Corporation	53,500
Sephardic Foundation for Torah Studies, Inc.	60,550	Stony Brook Foundation, Inc.	212,499
Sephardic Heritage Museum, Inc.	136,523	Stony Brook Hebrew Congregation, Inc.	80,000
Sephardic Institute	190,125	Struggle to Save Ethiopian Jewry, Inc.	121,960
Sephardic Synagogue - Brooklyn, NY	53,681	Student Leadership Network, Inc.	197,000
Sephardic Torah Center	488,919	Students for Sensible Drug Policy Foundation	70,000
Seventh Regiment Armory Conservancy, Inc.	116,000	Success Academy Charter Schools, Inc.	512,000
Seward Park High School Alumni Association	50,000	Suffield Academy	143,833
Shaare Zion Congregation - Brooklyn, NY	606,806	Sunlight Foundation	275,000
Shaarei Tikvah: The Scarsdale Conservative Congregation	64,686	Sunrise Day Camps Association, Inc.	66,200
Shalem Foundation	1,080,000	Sustainability Laboratory, Inc.	51,250
Share of New Square, Inc.	117,236	Sustainable Markets Foundation	250,000
Sharsheret, Inc.	130,050	Sylvester Manor Educational Farm	50,000
Shavei Hevron Institutions, Inc.	134,100	Synagogue of Deal	199,282
Shefa School, Inc.	255,870	Syracuse University	54,050
Shivat Zion Torah Center, Inc.	53,250	Talmud Torah Ohel Yochanan	150,000
Sh'or Yoshuv	78,117	Talmudic Research Center of Northern New Jersey	99,415
Shul of Bal Harbour, Inc.	417,770	Tamar Fund International, Inc.	72,800
Shuvi Nafshi Foundation, Inc.	154,951	TAMID Israel Investment Group Ltd.	231,980
Shuvu Return, Inc.	84,989	Team Rubicon	151,200
Sid Jacobson Jewish Community Center, Inc.	62,500	Tel Aviv Museums American Friends, Inc.	86,800
Sierra Club Foundation	73,156	Temple Adas Israel of Sag Harbor, NY	79,350
Signature Theatre Company	53,740	Temple Beth El of Boca Raton, Inc.	55,200
Simon Wiesenthal Center	80,513	Temple Beth Israel - Port Washington, NY	140,358
Sinai Special Needs Institute	301,413	Temple Beth Sholom - Roslyn Heights, NY	160,100
Sing Sing Prison Museum	172,450	Temple Israel Center of White Plains	97,484
Skidmore College	329,250	Temple Israel of the City of New York	73,133
Skystone Foundation, Inc.	100,000	Temple Shaaray Tefila a/k/a Congregation Shaaray Tefila	77,410
Smith College	139,700	The Alexander Hamilton Society	50,000
Smithsonian Institution	2,948,275	The American Friends of Beit Issie Shapiro, Inc.	94,226
Social Good Fund	402,300	The American Friends of Migdal Ohr	170,182
Sociedade Beneficente Israelita Brasileira "Hospital Albert Einstein"	240,000	The Ark	758,000
Society of the Four Arts	64,000	The Aspen Institute, Inc.	1,370,977
Solomon R. Guggenheim Foundation	52,490	The Auschwitz Institute for Peace and Reconciliation	80,000
Solomon Schechter Day School of Bergen County	233,564	The Barack Obama Foundation	2,000,400
Solomon Schechter Day School of Nassau County	156,986	The Beach Minyan at The Summer Shul, Inc.	774,499
Solomon Schechter School of Manhattan	164,591	The Berkshire Taconic Community Foundation, Inc.	55,887
South Fork Natural History Society	59,250	The Bi-Cultural Hebrew Academy of Connecticut Incorporated	59,784
Southern Poverty Law Center, Inc.	147,057	The Binyamin Fund, Inc.	61,300
Special Ed Academy of Deal, Inc. (SEAD)	122,624	The Birthright Israel Foundation	2,451,184
Spence School	10,013,000	The Brotherhood Sister Sol, Inc.	887,650
Squash Haven, Inc.	50,000	The Child Center of NY, Inc.	100,000
St. Francis Friends of the Poor, Inc. St. Francis Residence II	150,000	The Children's Aid Society	435,147
Stanford University Board of Trustees Leland Stanford Junior University	331,500	The Conservative Synagogue, Inc. - Westport, CT	87,975
		The Edmond J. Safra Synagogue, Inc.	1,162,486
		The Energy Foundation	500,000
		The First 72+	468,000
		The First Hungarian Congregation Ohab Zedek	50,376

ORGANIZATION	AMOUNT	ORGANIZATION	AMOUNT
The Flea Theater, Inc.	153,750	Type Media Center, Inc.	50,500
The Good People Fund, Inc.	107,310	UJA-Federation of Greenwich	61,950
The Goodnation Foundation, Inc.	544,200	UJA-Federation of New York, Inc.	28,587,613
The Graduate Center Foundation, Inc.	60,000	Union College, Schenectady, New York	379,200
The Jerusalem Aish HaTorah Fund	87,625	Union for Reform Judaism	205,024
The Jewish Community Center in Manhattan, Inc.	968,744	Union of Concerned Scientists, Inc.	170,166
The Jewish Federation of Greater Washington	222,580	Union of Orthodox Jewish Congregations of America	1,046,492
The Jewish Federations of North America, Inc.	50,388	Unitarian Universalist Church of Tucson	50,000
The Jewish Institute for National Security of America	258,432	United Jewish Federation of Stamford	126,410
The Leffell School	323,546	United Munkacser Yeshivos	217,360
The Massachusetts General Hospital	1,233,800	United Neighborhood Houses of New York, Inc.	116,050
The Nest Fund, Inc.	74,700	United States Holocaust Memorial Council	238,981
The New York Community Trust	257,360	United States Ski Team Foundation	50,100
The New York Public Library, Astor, Lenox & Tilden Foundations	2,794,486	United Way of Bergen County	55,450
The OJC Fund	138,801	University of California San Francisco Foundation	57,750
The Riverdale Minyan, Inc.	119,800	University of Chicago	112,130
The Schechter Institutes, Inc.	563,010	University of Miami	96,380
The Sephardic Food Fund, Inc.	1,014,673	University of Southern California	386,868
The Shalom Hartman Institute of North America	238,014	University of Texas Foundation	2,512,760
The Special Children Center	373,788	University of the People	50,000
The Sylvia Center, Inc.	88,287	University of Toledo Foundation	57,569
The Tikvah Fund	1,924,945	University Settlement Society of New York	125,250
The Tony Blair Foundation	205,000	Upstart Bay Area	716,250
The Trustees of Columbia University in the City of New York	3,402,688	USA Water Polo, Inc.	225,000
The UCLA Foundation	579,117	Vaad Harabbanim Linyanei Tzeduka, Inc.	63,206
The Voter Participation Center	426,902	Valley Chabad, Inc.	85,360
Third Way Institute	250,000	Valtarese Foundation, Inc.	75,000
Tides Center	189,526	Vassar College	100,000
Tides Foundation	442,500	Venetian Heritage, Inc.	60,000
Tiferet Torah	70,518	Vera Institute of Justice, Inc.	50,000
Tikvah-Etta & Lazear Israel Center for the Developmentally Disabled	250,000	Village Academies, Inc.	520,500
Tisch Multiple Sclerosis Research Center of New York, Inc.	1,549,500	Village Temple	231,390
Tom Coughlin J. Fund Foundation, Inc.	50,000	Vivian Beaumont Theater, Inc. d/b/a Lincoln Center Theater	87,500
Tomchai Torah Beretz Yisrael, Inc.	55,200	Volunteers In Medicine Berkshires, Inc.	100,250
Tomche Shabbos of Rockland County	87,565	Voter Registration Project	70,000
Torah Academy of Bergen County	185,638	W. Hardy Hendren Pediatric Surgical and Urological Education Foundation, Inc.	50,000
Torah Community Fund, Inc.	55,456	Washington Institute for Near East Policy	636,750
Torat Moshe, Inc.	63,000	Washington University	1,093,585
Torath Israel Sephardic Congregation	84,440	Wave Hill, Inc.	56,336
Town School, Inc.	1,093,500	We Are Family Foundation	55,000
Transportation Alternatives, Inc.	531,500	Wesleyan University	71,400
Trustees of Dartmouth College	769,030	West Harlem Environmental Action, Inc.	50,100
Trustees of Princeton University	1,176,371	West Side Hatzolah	324,162
Trustees of the Congregation Shearith Israel in the City of NY	235,483	West Side Kollel Torah Center	305,080
Trustees of the University of Pennsylvania	2,704,311	Westchester Community College Foundation, Inc.	60,980
Trustees of Tufts College	681,275	Westchester Day School	110,868
TSQ, Inc.	114,506	Westchester Jewish Center	1,320,362
Two River Theatre Company	75,000	Westchester Jewish Community Services, Inc.	91,962
		Westchester Medical Center Foundation, Inc.	278,465
		Westchester Philharmonic, Inc.	50,000

ORGANIZATION	AMOUNT	ORGANIZATION	AMOUNT
Westchester Reform Temple	69,873	Yeshivat Or Hachaim of Lakewood, Inc.	138,877
Westchester Torah Academy	62,410	Yeshivat Sha'alvim, Inc.	104,230
Western Organization of Resource	350,000	Yeshivat Yagdil Torah, Inc.	65,429
Westhampton Synagogue, Inc.	124,735	Yivo Institute for Jewish Research, Inc.	62,725
When We All Vote	150,000	Young Israel of Bal Harbour, Inc.	108,417
White Plains Hospital Medical Center	343,919	Young Israel of Great Neck	50,227
Wildlife Conservation Society	495,455	Young Israel of Hollywood-Fort Lauderdale	55,424
Williams College	296,300	Young Israel of Lawrence-Cedarhurst	197,296
Winston Churchill Foundation of the United States, Ltd.	60,000	Young Israel of New Rochelle	161,356
WNET	1,550,254	Young Israel of Riverdale	456,210
Wolcott School	50,000	Young Israel of Scarsdale	124,612
Women's International Zionist Organization	301,424	Young Israel of Woodmere	128,461
Woodbury Jewish Center, Inc.	68,069	Young Israel Ohab Zedek of North Riverdale/Yonkers	103,590
Worcester Polytechnic Institute	505,000	Young Judaea Global, Inc.	173,000
Working America Education Fund	100,500	Young Men and Women's Hebrew Association and Irene Kaufmann Centers	96,000
World Business Council for Sustainable Development (WBCSD)	700,000	Young Men's & Young Women's Hebrew Association d/b/a 92nd Street Y	3,317,389
World Central Kitchen Incorporated	309,591	Young Men's Christian Association of Greater New York	757,500
World Jewish Congress - American Section, Inc.	170,523	Young People's Chorus of New York City, Inc.	153,040
Writing Revolution, Inc.	60,000	Youth Force NOLA	1,675,000
Yad David, Inc.	162,003	Youth Renewal Fund	347,680
Yad Yosef	1,071,622	Zamir Choral Foundation, Inc.	90,260
YAFFED, Inc.	105,552	Zichron Menachem, Inc.	70,681
Yale University	906,230	Zohar Hatorah, Inc.	166,500
Yavneh Academy & Talmud Torah of Paterson	73,726		
Yeshiva & Mesivta Toras Chaim of Greater New York at South Shore	65,790		
Yeshiva Har Torah	53,636	Total Grants \$50,000 and over	481,873,359
Yeshiva High School for Girls, Inc.	78,474	Grants under \$50,000	54,225,018
Yeshiva Keren Orah	216,881	Total Grants	536,098,377
Yeshiva Ketana of Long Island	105,040		
Yeshiva Ketana of Manhattan	149,011		
Yeshiva Keter Torah, Inc.	194,872		
Yeshiva Ktana of Passaic	99,650		
Yeshiva Mikdash Melech	86,319		
Yeshiva of Bergen County, Inc.	147,085		
Yeshiva of Far Rockaway	55,422		
Yeshiva of North Jersey	138,393		
Yeshiva Ohr Torah Community School, Inc. (Manhattan Day School)	207,550		
Yeshiva Shaar Hatorah, Inc.	53,750		
Yeshiva Shaare Torah, Inc.	298,980		
Yeshiva Talmud Torah of Crown Heights	53,016		
Yeshiva Torah Vodaath	239,480		
Yeshiva University	2,124,371		
Yeshiva University High Schools	722,830		
Yeshivah of Flatbush	768,834		
Yeshivat Chovevei Torah Rabbinical School, Ltd.	555,910		
Yeshivat Darche Eres, Inc.	1,177,269		
Yeshivat Hechal Shemuel, Inc.	59,704		
Yeshivat Lev Torah	71,622		
Yeshivat Maharat, Inc.	395,960		





JCF is the donor advised fund of the Jewish community.

Since 1972, the Jewish Communal Fund (JCF) has been helping people achieve their philanthropic and tax-saving goals simply and efficiently, with flexibility, full confidentiality, convenience, and personal service from a dedicated professional staff. JCF has grown to be one of the largest and most generous networks of Jewish philanthropists in the world.

jcfny.org