

2023

# GIVING REPORT

**JCF** JEWISH  
COMMUNAL  
FUND

# TABLE OF CONTENTS

**1**

Letter from the President and CEO

**2-3**

Facilitating Philanthropy

**4-6**

The JCF Philanthropic Community

**7-11**

Grants

**12-13**

Special Gifts

**14-15**

Jewish Communal Impact

**16**

Contributions

**17-29**

FY 2023 Grants Listing

## ABOUT JEWISH COMMUNAL FUND

Jewish Communal Fund (JCF) is the largest and most active Jewish donor advised fund in the nation. JCF makes charitable giving simple, efficient, and secure. Our Fundholders report a 95% satisfaction rate, and many families have been with JCF for three generations. Highly regarded for its prudent management and personal service, JCF takes pride in being a resource for the Jewish community.

The impact of JCF's network of funders on the Jewish community and beyond is immense. In addition to an annual unrestricted grant to UJA-Federation of New York, JCF's Special Gifts Fund (our endowment) has granted more than \$26 million since 1999 to support programs in the Jewish community at home and abroad, including Israel emergency funding, kosher food pantries and soup kitchens, COVID-19 and disaster relief, day camp scholarships for children from low-income homes, and programs for Holocaust survivors. These charities are selected with the assistance of UJA-Federation of NY.

Jewish Communal Fund provides a simpler, more intentional, smarter way to give. To learn more about JCF, visit [jcfny.org](http://jcfny.org) or call us at 212.752.8277.



# Letter from the President and CEO

2023 marked a monumental year for the Jewish Communal Fund, a testament to the extraordinary generosity that defines our community. Throughout the fiscal year (July 1, 2022–June 30, 2023), JCF proudly distributed over **\$900 million** to more than 10,600 charities. These nearly 80,000 individual grants ranged from \$36 to transformative gifts reaching tens of millions of dollars.

JCF remains steadfast in its commitment to enriching the Jewish community through our communal gifts. In addition to a \$2 million unrestricted contribution to UJA, we proudly awarded over \$2 million to critical causes detailed on pages 12–13. These strategic investments empower essential services such as hunger relief, disability support, enriching camp experiences, and upgraded communal security.

## A Community in Action: Responding to Crisis

While the barbarous attacks of October 7, 2023, fell beyond our fiscal year, this harrowing date will forever mark our collective Jewish identity. It also profoundly impacted the way we give. JCF Fundholders demonstrated immediate and unwavering support for Israel, directing resources to broad-based efforts like the UJA Israel Emergency Fund and targeted interventions by emergency response teams, hospitals, mental health providers, and kibbutzim. Recognizing the urgency of the situation, JCF's Executive Committee swiftly allocated an additional \$500,000 from JCF's Special Gifts Fund to UJA's Israel Emergency Fund on October 8. This outpouring of support underscores one of JCF's core strengths: the ability to leverage predesignated funds to respond effectively during crises.

## Philanthropy with Purpose: A Reflective Look

The 2022 survey of American Jewish Philanthropy by the Lilly Family School of Philanthropy highlights a unique trend—Jews are more likely to contribute to nonreligious charities than are individuals of other faiths. This commitment to broader societal well-being is reflected within JCF. While 40% of our grant dollars went to Jewish organizations, a significant portion, 60%, supported non-Jewish causes. However, every single grant carries the powerful imprint of the Jewish Communal Fund, ensuring that recipients recognize the collective generosity of our community.

Since 1972, JCF has been a trusted partner in facilitating impactful philanthropy. Thank you for entrusting us to amplify your compassion and fuel positive change.



**Michael L. Stern**  
President



**Rachel Schnoll**  
CEO



# Facilitating Philanthropy

**As the leading Jewish donor advised fund in the country, the Jewish Communal Fund has a singular mission: to help our Fundholders get better at giving back.**

For over 50 years, we've helped our Fundholders make their charitable giving simpler and more tax-efficient—and along the way, we've made a profound impact on our community. In addition to our Fundholders' giving—totaling over \$907 million in FY 23—JCF's endowment donates millions of dollars to Jewish communal institutions and charities.

## Smarter, more intentional giving.

In our annual JCF Giving Report, we provide updated data and research capturing giving trends within the Jewish community, as seen from one of the longest-running donor advised funds in the country. JCF continues to play a critical role in facilitating charitable giving for a wide spectrum of Jewish philanthropists of varying means, ages, interests, and religious affiliations.



**“At JCF, our Fundholders embody the vibrant diversity of the Jewish community, and the array of secular and nonsecular charitable organizations they support mirrors this richness.”**

**Rachel Schnoll, CEO at JCF**

Holocaust survivors and Museum volunteers Albert Garin and Ruth Cohen light a candle during the Days of Remembrance ceremony at the U.S. Capitol. Photo courtesy of the U.S. Holocaust Memorial Museum.



Teens from Israel lighting the Shabbat candles at International Leadership Training Conference in summer 2023. Photo courtesy of bbyo.org.

## The JCF funder community snapshot

Even in uncertain economic conditions, JCF donors remained committed to their philanthropy.

### JCF FUNDHOLDERS

Made an average of **17 grants** per fund year, with a median grant amount of \$750.

Continued the trend of giving the largest number of dollars to sectors including **education, community organizations/human services, and Israel.**

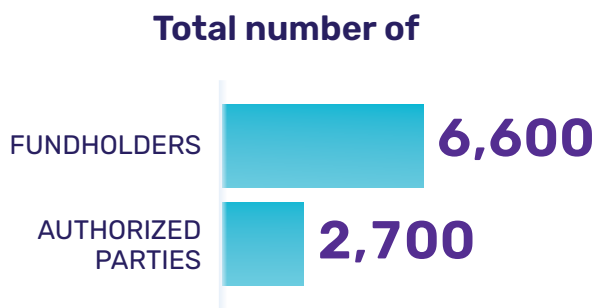
Distributed a remarkable **32%** of charitable assets as a collective in FY 23.

Granted over **\$367 million** to Jewish causes in FY 23, with UJA being the largest recipient.

We invite you to delve into this report and learn more about the JCF philanthropic community, charitable giving trends, and how JCF Fundholders collectively make our community and the world a better place.



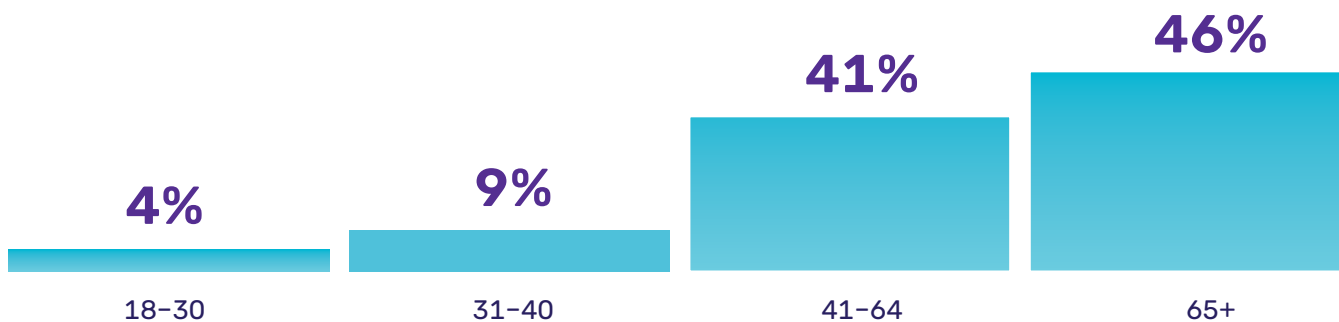
# The JCF Philanthropic Community



## WHO ARE JCF'S FUNDHOLDERS?

More than 9,200 people participate in some capacity on the over 4,780 funds at JCF. This includes Fundholders who oversee all aspects of the account and Authorized Parties (family members, assistants, advisors) appointed by the Fundholders with varying degrees of privileges to act on the fund. JCF allows Fundholders to name Successors to their fund and does not limit how many generations a fund can continue. Currently, there are Fundholders representing the third generation of their families.

## Fundholders' Ages



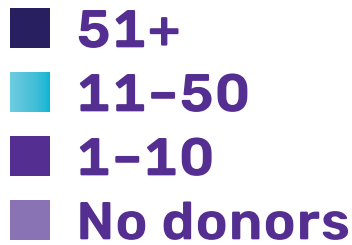
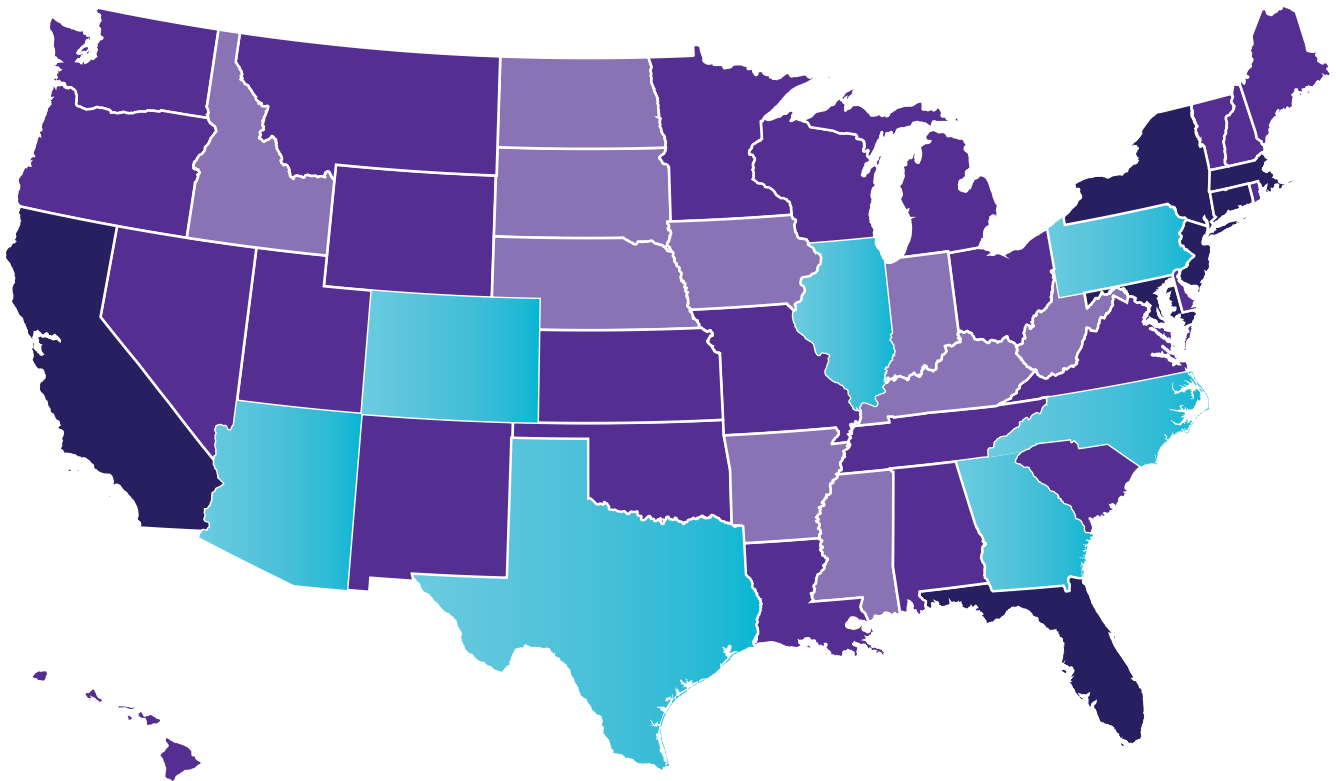
**61**

**Current Average Age**

**44**

**Average Age  
at Opening a Fund**

## GEOGRAPHIC LOCATION OF OUR FUNDHOLDERS



### U.S.

<b>4,220</b>	NEW YORK
<b>965</b>	NEW JERSEY
<b>382</b>	FLORIDA
<b>188</b>	CONNECTICUT
<b>175</b>	CALIFORNIA
<b>95</b>	MASSACHUSETTS
<b>55</b>	MARYLAND
<b>40</b>	PENNSYLVANIA
<b>33</b>	COLORADO
<b>32</b>	ILLINOIS
<b>274</b>	OTHER

### NEW YORK

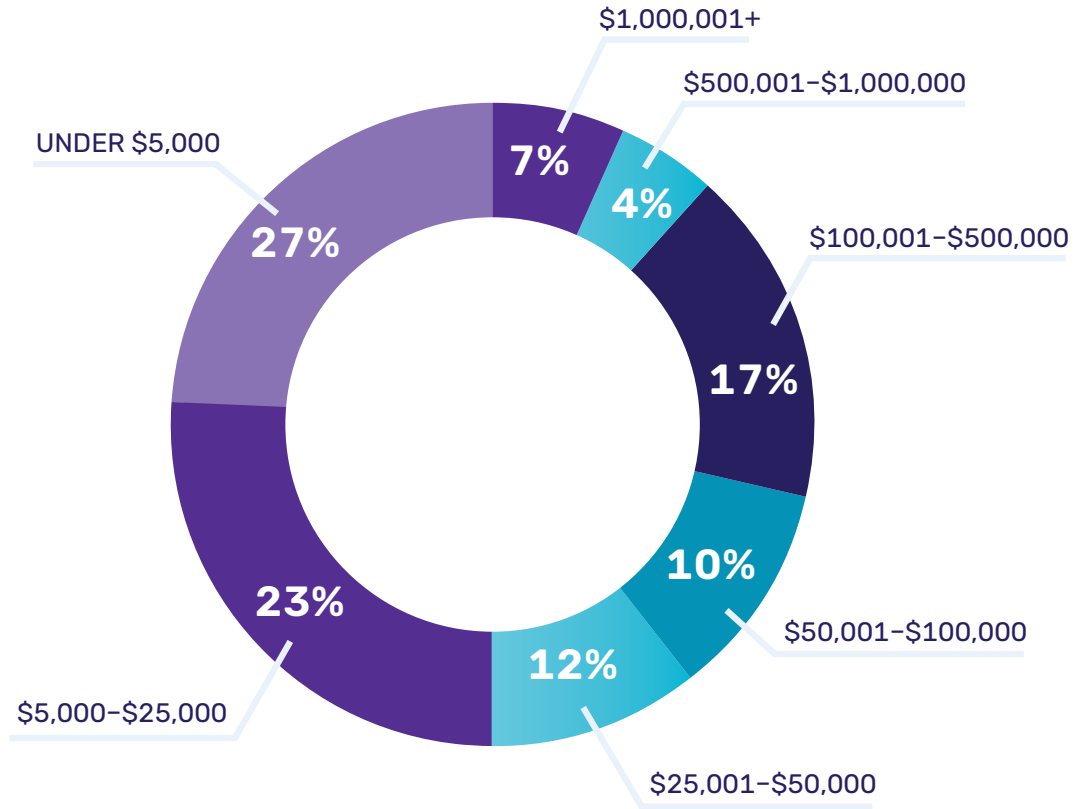
<b>1,850</b>	MANHATTAN
<b>693</b>	BROOKLYN
<b>649</b>	WESTCHESTER
<b>523</b>	NASSAU COUNTY
<b>147</b>	BRONX
<b>133</b>	QUEENS
<b>100</b>	ROCKLAND COUNTY
<b>63</b>	SUFFOLK COUNTY
<b>49</b>	OTHERS
<b>13</b>	STATEN ISLAND

### ABROAD

<b>108</b>	ISRAEL
<b>13</b>	OTHERS
<b>10</b>	CANADA

## BREAKDOWN OF JCF FUNDS BY BALANCE

Philanthropists at every level use JCF for their charitable giving.



**4,782**

Number of Funds

**\$25,570**

Median Account Balance



**\$2.8 Billion**

Charitable Assets under Management



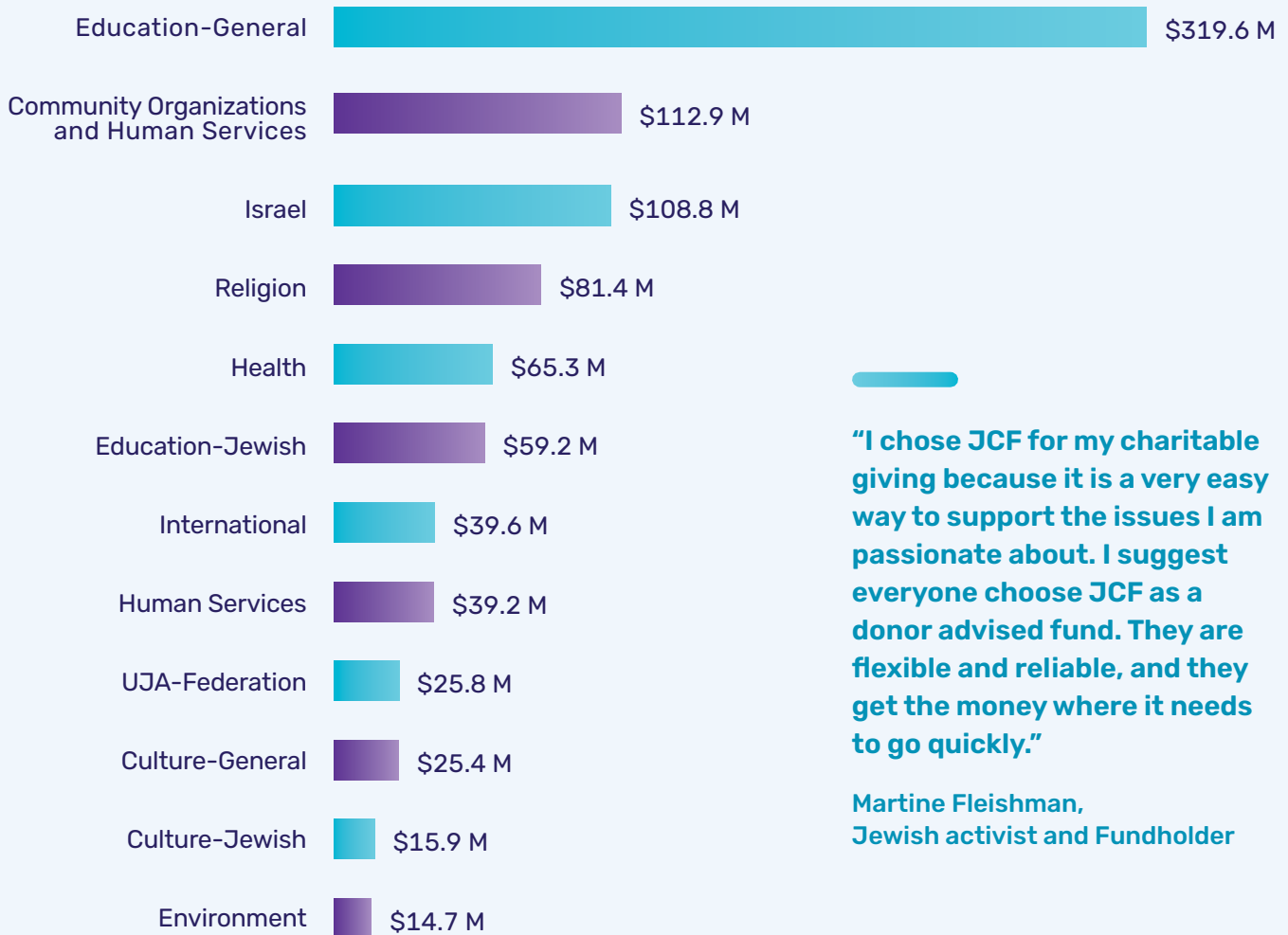
# Grants



# \$907.9 Million

Granted by JCF Fundholders in FY 2023

## WHICH CAUSES DO JCF FUNDHOLDERS SUPPORT?



**"I chose JCF for my charitable giving because it is a very easy way to support the issues I am passionate about. I suggest everyone choose JCF as a donor advised fund. They are flexible and reliable, and they get the money where it needs to go quickly."**

**Martine Fleishman,**  
Jewish activist and Fundholder

## JCF FUNDHOLDERS' GENEROSITY

---

JCF Fundholders distributed

**32%**

of total assets to charities in FY 23.

---

**99%**

Grants in which Fundholders provided charities with their name and contact information

---

**10,607**

Charities supported  
in 2023



**17**

Average number of  
grants per fund per year



## JCF DISTRIBUTED AN IMPRESSIVE NUMBER OF GRANTS

UNDER \$50,000

**75,380**  
GRANTS

\$50,000 - \$1 MILLION

**1,908**  
GRANTS

OVER \$1 MILLION

**76**  
GRANTS

**77,364**

Grants Distributed in 2023

Average Grant Amount

**\$11,639**

Median Grant Amount

**\$750**



Yeshivah of Flatbush Joel Braverman High School students learn molecular interactions in chemistry. Photo courtesy of Yeshivah of Flatbush.

# JCF Fundholders' Top Charities in FY 23

As measured by number and dollar amount of grants

## Community Organizations

### Top two charities in terms of # of Grants

- › UJA-Federation of New York, Inc.
- › Deal Sephardic Youth Center, Inc.

### Top two charities in terms of Dollar Amounts

- › UJA-Federation of New York, Inc.
- › Young Men's & Young Women's Hebrew Association d/b/a 92nd Street Y

## Culture-General

### Top two charities in terms of # of Grants

- › New York Public Radio
- › WNET

### Top two charities in terms of Dollar Amounts

- › Museum of Modern Art
- › Smithsonian Institution

## Culture-Jewish

### Top two charities in terms of # of Grants

- › United States Holocaust Memorial Council
- › Sephardic Heritage Museum, Inc

### Top two charities in terms of Dollar Amounts

- › Moishe House
- › Hillel: The Foundation for Jewish Campus Life



Volunteers baking challah for the SBH Food Pantry clients and community seniors. Photo courtesy of SBH Community Service Network, Inc.

## Education-General

### Top two charities in terms of # of Grants

- › The Trustees of Columbia University in the City of New York
- › Cornell University

### Top two charities in terms of Dollar Amounts

- › Johns Hopkins University
- › Cornell University

## Education-Jewish

### Top two charities in terms of # of Grants

- › Yeshivah of Flatbush
- › Hillel School - Ocean, NJ

### Top two charities in terms of Dollar Amounts

- › Yeshivat Darche Eres, Inc.
- › Yeshiva University



## Environment

### Top two charities in terms of # of Grants

- › Central Park Conservancy, Inc.
- › Nature Conservancy

### Top two charities in terms of Dollar Amounts

- › Sustainability Laboratory, Inc.
- › Central Park Conservancy, Inc.



## Health

### Top two charities in terms of # of Grants

- › Renewal of Life, Inc.
- › A Torah Infertility Medium of Exchange (ATIME)

### Top two charities in terms of Dollar Amounts

- › Target ALS Foundation Inc.
- › Mount Sinai Hospital



## Human Services

### Top two charities in terms of # of Grants

- › SBH Community Service Network, Inc.
- › Chai Lifeline

### Top two charities in terms of Dollar Amounts

- › SBH Community Service Network, Inc.
- › B'nai B'rith Youth Organization, Inc.



## International/Israel

### Top two charities in terms of # of Grants

- › American Friends of Yad Eliezer, Inc.
- › American Friends of Leket Israel, Inc

### Top two charities in terms of Dollar Amounts

- › JGIVE-Friends of Asor Fund USA, Inc.
- › American Friends of Tel Aviv University, Inc.



## Religious

### Top two charities in terms of # of Grants

- › Congregation of Beth Torah - Brooklyn, NY
- › Shaare Zion Congregation - Brooklyn, NY

### Top two charities in terms of Dollar Amounts

- › Yad Yosef Torah Center
- › The Edmund J. Safra Synagogue



Children with life-threatening and lifelong illness experience unforgettable summers at Chai Lifeline's community-based Camp Simcha Without Borders programs across the country. Photo courtesy of Chai Lifeline.

**TOTAL** **\$907.9 Million**



# JCF Granted Over \$2 Million in Special Gifts Fund Grants in 2023



Hunter Hillel Lounge.  
Photo courtesy of UJA-Federation of New York.



The Home Base at Henry Kaufmann Campgrounds on Long Island, which is serving as a blueprint for the Home Base being built at the Staten Island Henry Kaufmann Campgrounds.



Mid-Island JCC room for special programs.  
Photo courtesy of UJA-Federation of New York.



High Holiday services. Photo courtesy of 92NY.





**\$500,000**

to CUNY Hillels to give Jewish students a safe space and support for the outbreak of antisemitism on campuses

---



**\$500,000**

to Met Council Digital Pantry Brooklyn Hub, designed to offer a more dignified and streamlined solution to hunger

---



**\$500,000**

to Henry Kaufmann Campgrounds in Staten Island to build a Home Base for campers to relax and connect

---



**\$250,000**

to HFLS Bridge Loans for security improvements for two camps, three synagogues, and one Chabad house

---



**\$250,000**

to engage more people both in person and online in High Holiday services at 92NY

---



**\$60,000**

to Mid-Island Y JCC to create a room for a program helping adults with special needs in their daily lives

# Jewish Communal Impact

When Fundholders choose JCF to facilitate their charitable giving, they are making a powerful statement about giving as a Jewish collective to a broad range of charitable causes in all sectors.

JCF Fundholders also benefit from “double bottom line” returns—their fees are reinvested in the Jewish community in the form of a \$2 million gift to the UJA-Federation of New York’s annual campaign, as well as Community Gifts to Jewish organizations from JCF’s endowment, the Special Gifts Fund.

Jewish Communal Fund Fundholders granted **\$25.8 million** to UJA-Federation of New York in 2023. In addition, JCF makes an unrestricted Community Gift of \$2 million each year to UJA. **Since 1972, JCF has distributed over \$562 million to UJA.**

## 58,091

Fundholders’ grants to Jewish organizations in FY 23, totaling **\$367,197,600**

## 11.4%

increase in dollar amount of grants to Jewish charities, as compared to last year

## \$148.4 Million

granted in FY 23 to Israel/International

Since 2000, Jewish Communal Fund’s generous Fundholders have made:

## 520,018

GRANTS

to Jewish organizations, totaling **\$2.8 billion.**

## 164,148+

GRANTS

to Israeli and other international charities, totaling **\$1,156,041,513.**



# Jewish Values Impact Investments

JCF is committed to creating positive social impact beyond grantmaking. As such, we offer an array of impact investments that align with our mission as the largest Jewishly affiliated donor advised fund in the country. These offerings provide a distinct value-add for our Fundholders, giving them the opportunity to maximize their impact with their investments, in addition to their active grantmaking. They enhance the ESG and socially responsible investment options already on our platform.



The JLens Jewish Advocacy Strategy is a values-based S&P 500 Index strategy that aligns with Jewish values and advocates for communal concerns in the Socially Responsible Investing and Corporate Social Responsibility movements.



VanEck Israel ETF (ISRA) seeks to replicate as closely as possible, before fees and expenses, the price and yield performance of the BlueStar Israel Global Index (BLSNTR), which is comprised of equity securities of publicly traded companies that are generally considered to be Israeli companies.



JCF offers two types of Israel Bonds: the Maccabee Bond and the Jubilee Bond. The Bonds organization has been a catalyst for Israel's rapid evolution from a struggling agrarian nation to a global economic powerhouse and innovative wonder.



The JCF-HFLS Social Impact Loan Program, an innovative partnership with the Hebrew Free Loan Society, allows JCF Fundholders with accounts of \$100,000 or more to recommend that a portion of charitable assets go to interest-free loans to help lower-income borrowers get back on their feet financially or invest in a brighter future. When the two-year term is up, 100% of the loan amount is returned to the Fundholder's account to be granted out to charity or reinvested. Since the program's launch in November 2018, JCF Fundholders have provided more than \$4.65 million in interest-free loans to HFLS borrowers.



The JCF-Ogen Israel Impact Loan Program offers JCF Fundholders the opportunity to maximize their social impact in Israel today in a way that returns money to their fund for future grantmaking and impact investing. Ogen provides affordable, life-changing loans and financial mentoring to low- and middle-income Israelis, small businesses and not-for-profit organizations in Israel.

To learn more about our Jewish impact investment options and view the latest information about lock-up periods, fees, and returns, please visit the JCF website ([jcfny.org/impact-investments](https://jcfny.org/impact-investments)) or contact Igor Musayev at [igor@jcfny.org](mailto:igor@jcfny.org).

# Contributions

JCF FUNDHOLDERS CONTRIBUTE A WIDE RANGE OF ASSETS

**\$935,127,842**

Total for Fiscal Year 2023

**86%**

Cash  
Contributions

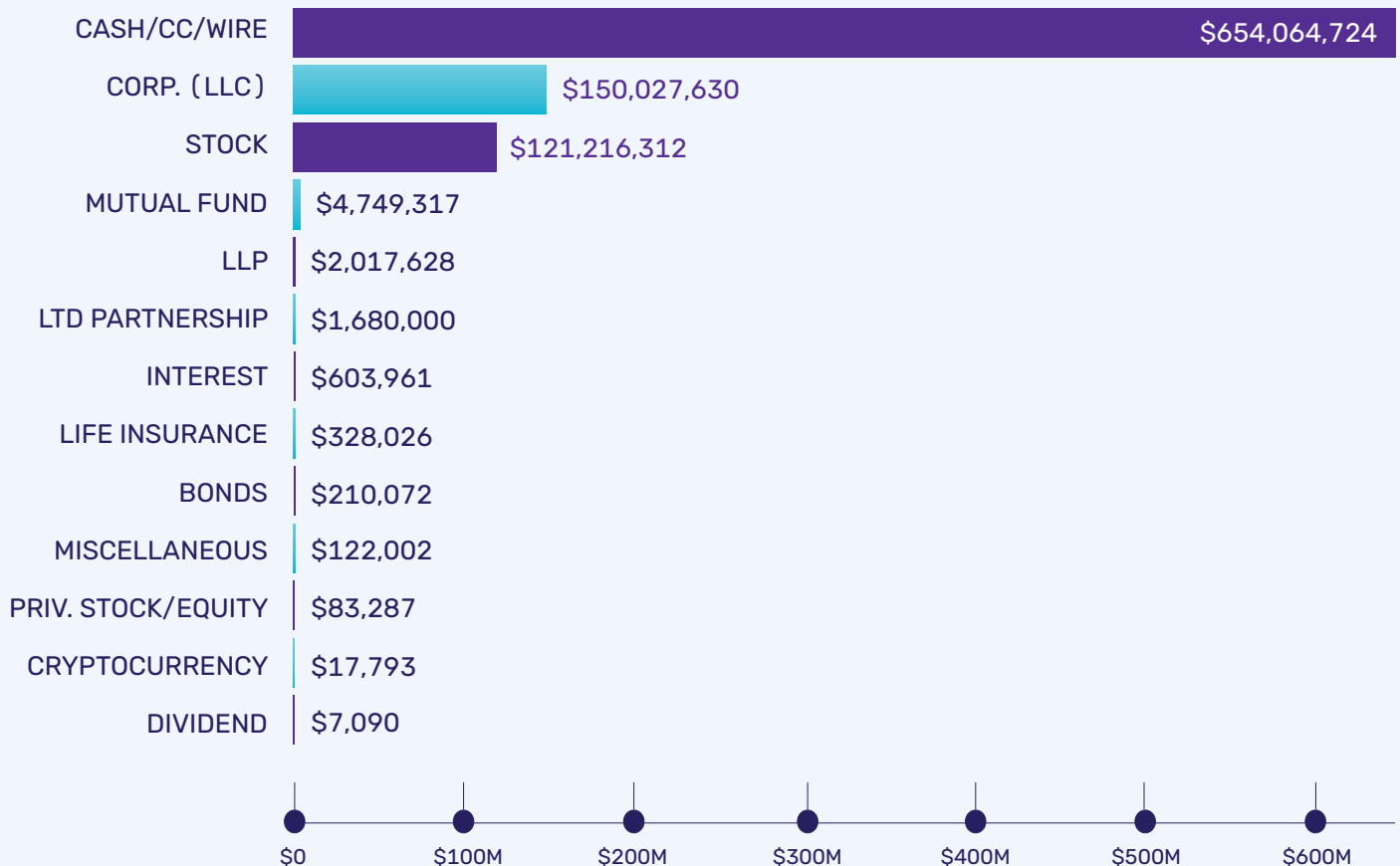
**13.5%**

Publicly Traded  
Securities

**0.5%**

Complex Assets  
(Non-Publicly Traded)

## TOTAL CONTRIBUTION AMOUNTS BY GIFT TYPE



# FY 2023 Grants Listing

Year Ended June 30, 2023

ORGANIZATION	AMOUNT	ORGANIZATION	AMOUNT
18 Corp. d/b/a Ahavat Torah of Short Hills	154,720	American Friends of Chabad of Thailand, Inc.	118,740
4G44 Esports, Inc.	277,000	American Friends of Chasdei Lev	159,817
50CAN, Inc.	39,500,000	American Friends of Covent Garden the Royal Opera the Royal Ballet	150,000
A Giving Hand Org, Inc.	393,638	American Friends of Daas Aharon, Inc.	61,800
A Torah Infertility Medium of Exchange (ATIME)	211,965	American Friends of Eretz Hemdah, Inc.	99,729
Abraham Joshua Heschel School	599,940	American Friends of Haketer Institute, Inc.	75,650
Academy Music Art Theatre S.R.L. Social Enterprise	65,000	American Friends of Happy Hearts, Inc.	102,180
Accion International	280,000	American Friends of Hebron Yeshiva Jerusalem, Inc.	116,446
Accion Opportunity Fund, Inc.	100,000	American Friends of Heichal Yerushalayim, Inc.	52,800
Achievement First, Inc.	75,000	American Friends of Israeli Navy Seals, Inc.	122,500
Actors Fund of America d/b/a Entertainment Community Fund	122,387	American Friends of Itim, Inc.	115,498
Administrators of Tulane Educational Fund	83,500	American Friends of Keren Achim	1,047,660
Advancing Israel Education, Inc.	250,000	American Friends of Keshet Yehudi, Inc.	92,750
Afya na Haki Institute	2,520,000	American Friends of Kupat Ha'Ir, Inc.	52,453
Agahozo-Shalom Youth Village, Inc.	4,367,630	American Friends of Leket Israel, Inc.	642,001
Agrarian Land Trust	66,458	American Friends of Lev Aharon	271,404
Agudath Israel of America, Inc.	245,470	American Friends of LIBI, Inc.	61,400
Agudath Israel of Long Island	69,160	American Friends of Magen David Adom	347,815
Ahaba Ve Ahva Congregation	518,096	American Friends of Matan, Inc.	175,630
Ahavat Haim Vachessed	242,657	American Friends of Meir Panim	66,190
Ahavat Yisroel Humanity, Inc.	59,600	American Friends of Migdal Ohr	222,632
Ahi Ezer Yeshiva, Inc.	98,145	American Friends of Mikdash Shaul	223,053
Aish Global, Inc.	554,480	American Friends of Nefesh Dovid, Inc.	240,375
Albert Einstein College of Medicine	803,628	American Friends of Netiv Aryeh, Inc.	1,610,160
Aleph Institute	86,180	American Friends of Nishmat	302,612
Algemeiner, Inc.	51,900	American Friends of Puah	78,629
Alliance for Middle East Peace, Inc.	125,000	American Friends of Rabbinical College Kol Torah, Inc.	264,760
Alpha Workshops	200,000	American Friends of Rabbinical College of Telzstone, Inc.	3,107,360
Amber Waves Farm, Inc.	50,000	American Friends of Ramat Bet Shemesh, Inc.	51,852
America Gives, Inc.	164,964	American Friends of Shalva Israel, Inc.	460,871
America-Israel Cultural Foundation, Inc.	65,747	American Friends of Shanti House, Inc.	56,000
American Associates of Ben-Gurion University of the Negev, Inc. d/b/a Americans for Ben-Gurion University	561,966	American Friends of Shehebar Sephardic Center, Inc.	271,602
American Cancer Society, Inc.	80,022	American Friends of Soroka Medical Center, Inc.	74,336
American Civil Liberties Union Foundation, Inc.	454,833	American Friends of Tel Aviv University, Inc.	3,911,679
American Civil Liberties Union of New Jersey Foundation	51,000	American Friends of the Alliance Israelite Universelle, Inc.	60,000
American Committee for Shaare Zedek Hospital in Jerusalem, Inc.	591,298	American Friends of the Hebrew University, Inc.	422,465
American Committee for the Weizmann Institute of Science, Inc.	240,701	American Friends of the Israel Museum	226,200
American Endowment Foundation	198,948	American Friends of the Israel Philharmonic Orchestra, Inc.	177,370
American Enterprise Institute for Public Policy Research	55,000	American Friends of the Jewish Campus Berlin, Inc.	50,000
American Friends of Agudat Shetile Zetim, Inc.	87,501	American Friends of the Peres Institute for Peace, Inc.	50,000
American Friends of Alyn Hospital, Inc.	101,848	American Friends of Tiferet Moshe Betzalel, Inc.	52,000
American Friends of Aram Soba	172,477	American Friends of Tikvot	111,384
American Friends of Batsheva Dance Company, Inc.	201,000	American Friends of Yad Eliezer, Inc.	1,863,567
American Friends of Beit Issie Shapiro, Inc.	60,460	American Friends of Yahad In Unum, Inc.	111,200
		American Friends of Yekerei Yerushalayim	202,401
		American Friends of Yeshiva D'mir, Inc.	409,670

ORGANIZATION	AMOUNT	ORGANIZATION	AMOUNT
American Friends of Yeshivas Tiferes Yisroel	470,000	Ballet Hispanico of New York	100,000
American Friends of Yeshivat Hakotel	78,115	Baltimore Symphony Orchestra, Inc.	52,500
American Friends of Yeshivat Hesder Sderot, Inc.	343,828	Bank of America Charitable Gift Fund	200,000
American Friends of Yeshivat Imrei Datt, Inc.	84,500	Bar-Ilan University in Israel d/b/a American Friends of Bar-Ilan University	90,396
American Friends of Yeshivat Lev HaTorah	169,392	Bard College	183,850
American Friends of Yeshivat Moreshet Yerushalayim, Inc.	180,929	Barkai Foundation, Inc.	1,313,300
American Friends of Yeshivat Nachalat Yossef	116,001	Barnard College	1,186,786
American Israel Education Foundation, Inc.	2,804,500	Baruch College Fund	124,334
American Jewish Committee	917,919	Beis Midrash of Queens	95,375
American Jewish Joint Distribution Committee, Inc.	2,676,631	Beit Chaverim Synagogue of Westport Norwalk, Inc.	313,242
American Jewish World Service, Inc.	635,322	Beit Medrash of Great Neck, Inc.	53,086
American Legion Charities, Inc.	68,000	Beit Rabban Day School	1,357,238
American Museum of Natural History	270,374	Beith Matityahu	180,000
American National Red Cross	92,857	Belev Echad, Inc.	472,087
American Sephardi Federation	50,272	Bellwether Education Partners, Inc.	55,000
American Society for Technion-Israel Institute of Technology	688,920	Ben Porat Yosef, Inc.	119,402
American Society for the Prevention of Cruelty to Animals	52,754	Bene Shaare Zion	57,010
American Society for Yad Vashem, Inc.	137,563	Benjamin Tree, Inc.	125,000
American Theatre Wing	80,000	Bergen Hatzalah Emergency Medical Services, Inc.	81,108
American-Italian Cancer Foundation	125,000	Berkshire Pulse, Inc.	160,000
Americans for the Israeli Third Way, Inc.	105,000	Berkshire Theatre Group, Inc.	166,650
Amherst College Trustees	138,125	Bet Am Shalom Synagogue	67,960
AMIT Children, Inc.	396,522	Bet Medrash Gadol Ateret Torah	136,305
AmplifyChange Limited	3,158,000	Bet Midrash NY	80,024
Amudim Community Resources, Inc.	78,375	Bet Midrash Ohel Torah	92,725
Animal Medical Center	346,625	Bet Yaakov of the Jersey Shore	170,947
Aniyei Yerushalayim, Inc.	86,896	Bet Yaakov Orot Sarah, Inc.	249,826
Anschei Chesed Fund, Inc.	1,000,000	Bet Yaakov Oz Vehadar, Inc.	76,688
Anshei Emuna Congregation, Inc.	97,825	Beth Medrash Govoha of America d/b/a Adirei HaTorah	993,606
Anti-Defamation League	1,340,610	Beth Medrash Govoha of Israel	602,000
Arawaka, Inc.	50,000	Bethany Arts Community, Inc.	52,000
Arbor Brothers, Inc. d/b/a Arbor Rising	75,000	Beth-El Synagogue of New Rochelle, Inc.	76,355
Areivim Philanthropic Group, Inc.	300,000	Biblical Arts Center Miracle at Pentecost Foundation	55,000
Ariel Education Initiative	90,000	BIGVISION Foundation	166,660
Ars Nova Theater I, Inc.	53,700	Bikur Cholim of Manhattan, Inc.	59,562
Art Omi, Inc.	211,180	Birthright Israel Foundation	2,139,412
Artis Contemporary Israeli Art Fund, Inc.	205,000	Blythedale Children's Hospital	53,140
Artists in Residence, Inc.	50,000	B'nai B'rith Youth Organization, Inc.	2,127,204
Artists Space, Inc.	62,500	B'naiTorah Congregation	86,136
Aspen Institute, Inc.	691,900	Bnei Binyamin	88,425
Association for Promotion of Jewish Secularism	75,250	B'nos Bais Yaakov of Far Rockaway	73,530
Association of Graduates of the United States Military Academy d/b/a West Point Association of Graduates	786,100	Bnot Shirah of Deal, Inc.	97,007
At the Well Project, Inc.	102,000	BNY Mellon Charitable Gift Fund	400,000
Ateret Torah Center	979,233	Board of Jewish Education, Inc. d/b/a The Jewish Education Project	442,328
Athletes For Israel, Inc.	314,240	Boca West Community Charitable Foundation, Inc.	60,266
Auburn Theological Seminary	110,550	Bon Secours Community Works, Inc.	50,000
Auschwitz-Birkenau Memorial Foundation	100,036	Bonei Olam, Inc.	439,930
Avenues for Justice, Inc.	55,610	Boston College Trustees	122,751
Avigdor's Helping Hand, Inc.	89,002	Boundless Israel, Inc.	60,000
AVODAH: The Jewish Service Corps, Inc.	54,150	Boys Hope Girls Hope of New York	50,000
Ayco Charitable Foundation	90,000	Brainiacs Org, Inc.	70,000
Bais Chana Women International, Inc.	118,000	Brandeis Hillel Day School - Marin	64,700
Bais HaVaad L'inyonei Mishpat	72,996	Brandeis University	670,490
Bais Medrash Ohr Hatorah of New Jersey, Inc.	88,680	Brazil Foundation	65,000
Bais Medrash Toras Chesed, Inc.	112,806	Brearely School	148,060
Bais Menachem of North Miami Beach	91,200	Breast Cancer Research Foundation, Inc.	175,460
		Bridge Over Troubled Waters, Inc.	226,000
		Brigham and Women's Hospital, Inc.	52,180



ORGANIZATION	AMOUNT	ORGANIZATION	AMOUNT
Brigid Alliance, Inc.	78,550	Chabad Lubavitch of the West Side, Inc.	122,500
Bris Avrohom	51,871	Chabad Lubavitch on Campus-Princeton	186,780
Broadway Cares-Equity Fights AIDS, Inc.	129,357	Chabad of Bedford, Inc.	121,100
Brookings Institution	150,000	Chabad of Binghamton	83,119
Brooklyn Boatworks, Inc.	56,750	Chabad of Charlottesville	58,000
Brooklyn College Foundation, Inc.	586,580	Chabad of College Hill, Inc.	163,300
Brooklyn Heights Synagogue	358,495	Chabad of Gramercy Park	61,350
Brotherhood Sister Sol, Inc.	190,250	Chabad of Greater Los Feliz	50,000
Brothers for Life	672,160	Chabad of Old Tappan	80,461
Brown Hillel	382,960	Chabad of S. Francisco, Inc.	68,301
Brown University	8,935,587	Chabad of Sonoma County	133,360
Brunswick School, Inc.	61,250	Chabad of Southampton, Inc.	69,140
Bucknell University	52,600	Chabad of the Shore	595,777
Cahn Fellows Programs Corporation	50,000	Chabad of Tribeca	153,160
California Innocence Project Foundation	50,000	Chabad on Campus International, Inc.	302,630
Calvin Coolidge Presidential Foundation, Inc.	50,000	Chabad-Lubavitch of the Upper East Side, Inc.	55,286
Camden Education Fund, Inc.	1,495,000	Chai Lifeline	1,074,166
Camp Hachsharomshava of New York, Inc. (Camp Moshava)	105,800	Chai Mitzvah, Inc.	50,600
Camp HASC, Inc.	114,854	Changing the Conversation Together, Inc.	50,000
Camp Ramah in the Berkshires, Inc.	235,740	Chapin School, Ltd.	414,000
Caramoor Center for Music & the Arts, Inc.	97,850	Charities Aid Foundation America	145,008
Care for Special Needs Children Foundation, Inc.	217,947	Chasdei Meshilam	336,701
CaringKind	265,310	Chayim V'Chesed, Inc.	165,000
Carmeil Ha'ir International, Inc.	64,738	Chazak	320,733
Carnegie Hall Corporation	307,850	Chesed of South Florida, Inc.	50,000
Carnegie Mellon University	53,100	Children NOW	75,000
Case Western Reserve University	230,100	Children's Hospital of Philadelphia Foundation	137,450
Cathedral Church of St. John the Divine	118,880	Children's Museum of Manhattan Growth Through Art & Museum Experience	58,500
Catholic Charities of the Archdiocese of Miami, Inc.	50,000	Children's Tumor Foundation	823,000
Cedars-Sinai Medical Center	1,012,000	Chochmat HaLev	50,000
Center for American Progress	1,025,000	Chronicle of a People Foundation, Inc.	143,000
Center for Art, Research and Alliances, Inc.	100,000	Citizens' Committee for Children of New York	119,200
Center for Curatorial Leadership	185,500	Citizens for Conservation, Inc.	90,000
Center for Global Development	100,000	City Futures, Inc.	76,500
Center for Holocaust, Human Rights & Genocide Education, Inc.	50,000	City Harvest, Inc.	273,873
Center for Independent Thought, Inc.	100,000	City Year, Inc.	65,000
Center for Jewish Community Studies	65,000	Citymeals-on-Wheels	540,262
Center for Jewish Culture and Creativity d/b/a Jewish Creativity International	61,800	Civic Nation	100,000
Center for Jewish History, Inc.	53,686	Civic Works, Inc.	50,000
Center for Political Accountability	205,000	Civil Rights Corps	100,200
Center for Reproductive Rights, Inc.	342,069	CLAL-The National Jewish Center for Learning and Leadership, Inc.	75,780
Center for Transformative Action	62,500	Clark University	197,000
Center on Budget and Policy Priorities	175,000	Clay Art Center, Inc.	183,300
Central Fund of Israel	3,427,370	Clifton Cheder, Inc.	83,530
Central Park Conservancy, Inc.	531,118	Clooney Foundation for Justice	501,000
Central Synagogue Congregation Ahavath Chesed Shaar Hashomayin	1,199,199	Coalition for the Homeless, Inc.	75,536
Chabad at Lehigh, Inc.	119,400	Cold Spring Harbor Laboratory	916,674
Chabad at the Civic Center	125,129	Coel Chabad	739,092
Chabad House Bowery, Inc.	159,445	Collegiate School, Inc.	210,000
Chabad Israel Center of the Upper East Side, Inc.	54,629	Columbia/Barnard Hillel, Inc.	75,981
Chabad Lubavitch Jewish Center of Needham	62,853	Columbus Citizens Foundation, Inc.	90,100
Chabad Lubavitch of Briarcliff Manor - Ossining	65,000	Commentary, Inc.	96,260
Chabad Lubavitch of Delaware, Inc.	80,982	Committee for Accuracy in Middle East Reporting in America, Inc. (CAMERA)	251,361
Chabad Lubavitch of Idaho, Inc. d/b/a Idaho Mikvah Fund	105,000	Community Access to the Arts, Inc.	207,250
Chabad Lubavitch of Mercer County, Inc.	62,800	Community Foundation of Jackson Hole	161,250
Chabad Lubavitch of Puerto Rico, Inc.	70,897	Community Security Service	277,872
		Community Synagogue of Tenafly and Englewood	174,996

ORGANIZATION	AMOUNT	ORGANIZATION	AMOUNT
Community-Police Relations Foundation, Inc.	265,500	Congregation Ohel Yishak, Inc. - Allenhurst, NJ	276,934
Compassion & Choices	55,240	Congregation Ohr Hatorah, Inc.	57,150
Concern Foundation	50,000	Congregation Ohr Torah, Inc.	349,601
Conference of Presidents of Major American Jewish Organizations Fund, Inc.	75,300	Congregation Or Zarua	156,830
Congregation Ahavas Tzdokah V'Chesed, Inc.	191,472	Congregation Orach Chaim	94,296
Congregation Ahavat Shalom - Brooklyn, NY	320,735	Congregation Rachmistrivka, Inc.	101,260
Congregation Ahavat Torah A NJ Nonprofit Corporation	60,824	Congregation Rinat Yisrael	133,452
Congregation Ahavath Chesed, Inc.	54,350	Congregation Rodeph Sholom - New York, NY	255,986
Congregation Ahavath Torah	241,626	Congregation S.Y.E., Inc.	113,806
Congregation Aish Kodesh	93,071	Congregation Sfat Tammim	106,271
Congregation and Yeshiva Beth Hillel	220,000	Congregation Shaare Rahamim, Inc.	135,882
Congregation Ansche Chesed - New York, NY	166,260	Congregation Shaare Shalom, Inc.	61,420
Congregation Anshei Shalom of Lawrence	245,000	Congregation Shaari Tefiloh of Kings Highway	758,771
Congregation Bais Ephraim, Inc.	53,000	Congregation Stolin Karlin	335,800
Congregation Bais Moshe Yehuda	75,000	Congregation Tiferes Tzvi	163,400
Congregation Bais Shalom, Inc.	148,172	Congregation Tifereth Israel	78,725
Congregation Baith Israel Anshei Emes	52,276	Congregation Tifereth Moshe	122,000
Congregation Beis Ephraim	61,080	Congregation Yad Shaul	51,200
Congregation Beit Edmond	177,685	Congregation Yagdil Torah, Inc.	89,000
Congregation Beit Yosef of Deal, Inc.	68,392	Congregation Yeshiva Karlin Stolin of Monsey	92,300
Congregation Bet Shmuel	66,132	Congregation Yeshiva of Telshe Alumni	202,050
Congregation Beth Aaron of Teaneck	99,298	Congregation Zichron Mordechai Shlomo	62,800
Congregation Beth Abraham - Bergenfield, NJ	230,776	Congregation Zichrone Binyamin	128,161
Congregation Beth Israel - North Adams, MA	70,000	Connecticut College	102,700
Congregation Beth Medrash Govoha	701,253	Conservative Synagogue of Riverdale	77,426
Congregation Beth Menachem of Glovev	53,696	Conservative Synagogue, Inc. - Westport, CT	59,985
Congregation Beth Torah - Brooklyn, NY	1,425,773	Constructive Dialogue Institute, Inc.	261,318
Congregation B'nai Jeshurun - New York, NY	2,433,230	Convent of the Sacred Heart	68,000
Congregation B'nai Yeshurun - Teaneck, NJ	150,471	Cornell Hillel	85,210
Congregation Bnei Moshe	93,310	Cornell University	23,180,579
Congregation B'nei Torah of Lawrence	50,675	Corporation of Haverford College	54,871
Congregation B'nei Yeshivah, Inc.	112,996	Council on Foreign Relations, Inc.	1,898,500
Congregation Brothers of Israel of the Jersey Shore, Inc.	88,666	Creative Visions Foundation	160,000
Congregation Chaim Vachased	121,450	Crohn's & Colitis Foundation, Inc.	214,870
Congregation Darchei Noam - Brooklyn, NY	84,661	Crown Heights Chevra Simchas Shabbos Vyom Tov, Inc.	283,314
Congregation Darchei Torah	91,278	Cumbe: Center for African and Diaspora Dance, Inc.	80,000
Congregation Emanu-El - San Francisco, CA	210,000	Cyber Civil Rights Initiative	100,000
Congregation Emanu-El of the City of New York	657,645	Daat Center, Inc.	508,000
Congregation Emanu-El of Westchester	109,322	Dalton Schools, Inc.	67,430
Congregation Friends of Refugees of Eastern Europe	96,120	Dana-Farber Cancer Institute, Inc.	199,172
Congregation Kehal Chasidy Chernobel	58,500	Dance Theatre of Harlem, Inc.	72,250
Congregation Kehal Imrei Shaul	131,900	Darchei David Foundation	256,178
Congregation Kehilath Jeshurun	829,003	Daughters of Israel, Inc.	68,800
Congregation Keren Hagemach	55,061	Davis Memorial Fund, Inc. d/b/a Leon Leif Children's Fund	469,195
Congregation Keren L'Torah, Inc.	72,411	Deakin University	276,000
Congregation Keter Zion	51,416	Deal Sephardic Youth Center, Inc.	1,070,348
Congregation Keter Torah a/k/a Northern Teaneck Synagogue Association	197,950	DEJ International Heritage Foundation, Inc.	132,021
Congregation Khal Chasidim of Lawrence	125,000	Democracy Now Productions, Inc.	81,250
Congregation Khal Tzemach Tzadik Viznitz	79,000	Derech Emet Torah Center	59,855
Congregation Kol Ami - White Plains, NY	100,265	Dia Center for the Arts, Inc.	695,100
Congregation Kollel Hechal Hatorah, Inc.	55,814	Doctors Without Borders USA, Inc.	1,212,890
Congregation Kollel of Flatbush	50,000	Donors' Fund, Inc.	18,291,960
Congregation Lubavitch of Long Island	55,850	Dorot, Inc.	250,816
Congregation Machzeh Avruhom, Inc.	95,900	Drug Policy Alliance	101,540
Congregation Magen David of West Deal	454,909	Duke University	483,446
Congregation Meshech Chochma, Inc.	448,343	Duke University Health System, Inc.	1,833,333
Congregation Mosdos Toldos Aharon	88,600	Durham-Chapel Hill Jewish Federation	65,500
Congregation Nachlas Dovid	100,000	Dwight-Englewood School	108,500
		Earthjustice	117,475
		Earthville Network	105,500

ORGANIZATION	AMOUNT	ORGANIZATION	AMOUNT
East Hill Synagogue	166,751	Foundation for Defense of Democracies, Inc.	162,250
Echoing Green Foundation	50,500	Foundation for Jewish Camp, Inc.	990,020
Economic Club of New York	60,000	Foundation for National Progress	300,000
Edible Schoolyard New York	102,180	Foundation for New York's Strongest, Inc.	75,000
Edith and Carl Marks Jewish Community House of Bensonhurst, Inc.	84,000	Foundation for Prader-Willi Research	51,250
Edlavitch Jewish Community Center of Washington, DC, Inc.	145,500	Foundation for Sephardic Studies, Inc.	316,378
Edmond J. Safra Synagogue of Deal, NJ	270,558	Foundation to Combat Anti-Semitism, Inc.	127,750
Edmond J. Safra Synagogue, Inc.	2,685,305	Fred Hutchinson Cancer Center	100,000
Educational Institute Oholei Torah of Brooklyn, Inc.	57,197	Free and Fair Litigation Group, Inc.	55,000
Eilat Charities, Inc.	76,800	French-American International School	50,250
Elaine Kaufman Cultural Center-Lucy Moses School for Music and Dance	313,600	Fresh Air Fund	59,111
ELEM Youth in Distress, Inc.	169,213	Friends of Ahavat Shalom, Inc.	340,403
Elie Wiesel Foundation for Humanity, Inc.	50,000	Friends of Amal-Tikva, Inc.	225,000
Elm City Montessori School, Inc.	60,904	Friends of Bezalel Academy of Arts & Design, Inc.	254,405
Emahot Foundation, Inc.	72,472	Friends of Bikur Cholim Ezrat Achim, Inc.	50,660
Emergency Family Assistance Association	75,000	Friends of Bronx Lab, Inc.	50,000
Emory Jewish Student Center, Inc.	56,040	Friends of Bshvil Hamachar, Inc.	180,250
Empire Center for Public Policy, Inc.	110,000	Friends of Chabad of Hebron	71,380
Emunah of America, Inc.	236,740	Friends of ELNET	54,700
Encounter Programs, Inc.	693,260	Friends of Hudson River Park, Inc.	114,700
Environmental Working Group	155,600	Friends of Ir David, Inc.	163,780
Equal Justice Initiative of Alabama, Inc.	115,880	Friends of Karen, Inc.	52,586
Equity Project Charter School	150,000	Friends of Mosaic United	125,000
ESD Global, Inc.	255,000	Friends of Nahar Shalom, Inc.	108,580
Ethical Culture Fieldston School	98,833	Friends of Neve College for Women, Inc.	56,583
Ethics and Public Policy Center, Inc.	220,000	Friends of Rodeph Shalom School, Inc.	69,550
Etzion Foundation, Inc.	604,845	Friends of School in the Square, Inc.	52,000
Ezer M'zion, Inc.	78,390	Friends of Shearim Hametsuyanim, Inc.	60,183
Facing History and Ourselves National Foundation, Inc.	329,270	Friends of Sheba Medical Center, Inc.	281,601
Fairfield Historical Society	90,000	Friends of the Gateway School, Inc.	52,000
FDNY Foundation, Inc.	58,500	Friends of the Israel Defense Forces	1,389,528
Federation CJA	255,000	Friends of the Musées des Arts Décoratifs	250,000
Federation for Jewish Philanthropy of Upper Fairfield County, Inc.	52,650	Friends of the Scarsdale Library, Inc.	131,000
Federation of Jewish Communities of the C.I.S., Inc.	79,593	Friends of Unistream, Inc.	101,500
Federation of Jewish Communities of Ukraine, Inc.	407,600	Friends of United Hatzalah, Inc.	1,093,250
Feeding America	124,003	Friends of Yad Sarah, Inc.	143,236
Feeding Westchester, Inc.	153,308	Friendship Circle Metrowest, Inc.	64,880
Fidelity Investments Charitable Gift Fund	13,666,982	Friendship Circle of Greater Miami, Inc.	68,940
Fifth Avenue Synagogue	2,490,280	Frisch School	363,563
Film at Lincoln Center, Inc.	60,500	Fuente Latina, Inc.	175,000
Film Makers Collaborative Incorporated	55,500	Fund for Educational Excellence, Inc.	167,550
FilmNorth	50,000	Fund for Israel's Tomorrow	133,694
Fiorello H. LaGuardia Community College Foundation	72,500	Fund for the Aged, Inc. d/b/a Jewish Home and Hospital Foundation	181,740
FJC	903,430	Garrison Institute	160,000
Flatbush Community Fund, Inc.	106,636	Gary Klausner Chesed Fund, Inc. d/b/a Hand-in-Hand of Passaic-Clifton	105,826
Flatbush Volunteers of Hatzolah, Inc.	142,937	Gateway to the Future, Inc.	68,950
FMW Nonprofit Solutions	127,500	Gateways Organization, Inc.	114,680
Folksbiene Yiddish Theatre, Inc.	126,700	Gay Men's Health Crisis, Inc.	1,008,200
Follow Your Dream	10,025,000	Gemach Zichron Moshe, Inc.	289,540
Food Allergy Research & Education, Inc. (FARE)	55,000	Georgetown University	55,555
Food Bank for New York City, Food for Survival	162,359	Gesher Foundation, Inc.	96,356
Food for Families, Inc.	68,000	Gesher Yehuda, Inc.	232,620
Footsteps, Inc.	130,638	Ghetto Film School, Inc.	50,000
Fordham University	2,767,932	Giant Step Arts Ltd.	75,000
Fortune Society, Inc.	186,300	Girls Educational and Mentoring Services, Inc.	50,436
Foundation for City College	215,500	Girls' Town Or Chadash	65,537
		GiveDirectly, Inc.	107,360
		Giving Back Fund, Inc.	53,500

ORGANIZATION	AMOUNT	ORGANIZATION	AMOUNT
GlamourGals Foundation, Inc.	55,000	Hospital for Special Surgery Fund, Inc.	3,068,764
GlassRoots, Inc.	83,000	Hot Tubes Development Cycling Team, Inc.	75,000
Global Health Corps, Inc.	101,000	Hotel Trades Council and Hotel Industry Training Fund	100,000
Global Poverty Project, Inc.	51,000	Hunter College Foundation, Inc.	159,120
Goddard-Riverside Community Center	50,900	Icahn School of Medicine at Mount Sinai	1,546,331
Goldman Sachs Charitable Gift Fund	200,000	Ichud Mosdos Hachinuch in Brooklyn	70,500
Good Energy Project, Inc.	125,000	Idea School, Inc.	75,580
Good People Fund, Inc.	182,178	IfNotNow	70,000
Goodnation Foundation, Inc.	849,500	Igud Hamechanchim, Inc.	315,000
Goucher College	210,360	Ilan High School, Inc.	392,610
Grand Street Settlement, Inc.	51,250	Imagination Productions, Inc.	282,480
Grand Teton National Park Foundation	53,500	IMPACT Personal Safety	142,000
Great Neck Synagogue	94,373	ImpactAssets, Inc.	7,200,000
Greater Miami Hebrew Academy	376,160	ImpactIsrael, Inc.	133,240
Greater Miami Jewish Federation	91,900	Indian Harbor Yacht Club Foundation, Inc.	100,000
Greenburger Center for Social and Criminal Justice	5,122,000	Injured Marine Semper Fi Fund	50,500
Greenlight Fund, Inc.	200,000	Injustice Watch	55,000
Hackensack University Medical Center Foundation	231,840	Innocence Project, Inc.	92,936
Hadassah the Women's Zionist Organization of America, Inc.	175,809	Innovation Network for Communities	150,000
Haitian Lawyers Association, Inc.	50,000	Institute for Jewish Spirituality, Inc.	74,996
Halacha Education Center Corp.	106,000	Institute for Justice	177,075
Hand In Hand: American Friends of the Center for Jewish-Arab Education in Israel	69,536	Institute for the Study of Global Anti-Semitism and Policy, Inc.	60,360
Hands on Tzedakah, Inc.	519,500	International African American Museum	150,050
Hannah Senesh Community Day School	63,000	International Beit Din, Inc.	251,000
Harford Community College Foundation, Inc.	80,000	International Documentary Association, Inc.	56,000
Harvard University	18,331,155	International Fellowship of Christians & Jews	646,262
Hasty Pudding Club the Institute of 1770	75,000	International Network for Simulation-Based Pediatric Innovation, Research and Education	150,000
Hatzalah Emergency Medical Services of the Jersey Shore, Inc.	215,323	International OCD Foundation, Inc.	405,500
Hatzalah of the Rockaways and Nassau County, Inc.	51,120	International Planned Parenthood Federation	5,840,272
Hatzalah of Waterbury, Inc.	90,000	International Print Center New York	70,500
Hatzolah Emergency Air Response Team, Inc.	60,594	International Rescue Committee, Inc.	525,156
Health and Humanitarian Aid Foundation	100,000	International Tennis Hall of Fame Incorporated	100,000
Health Care Without Harm	251,000	Iona University	1,750,000
Health Initiative, Inc.	400,000	IsraAID US, Inc.	74,700
Hebrew Academy of Long Beach	85,660	Israel Cancer Research Fund, Inc.	407,125
Hebrew Academy of Nassau County	167,619	Israel Emergency Alliance	315,791
Hebrew Academy of the Five Towns and Rockaway	117,061	Israel Independence Fund	111,800
Hebrew Free Loan Society, Inc.	1,303,104	Israel Medical Fund Corp.	211,263
Hebrew Institute of University Heights d/b/a Hebrew Institute of Riverdale	196,877	Israel Nature and Heritage Foundation of America, Inc.	70,000
Hebrew Union College-JIR	99,860	Israel on Campus Coalition	280,000
Heichal Hatorah Incorporated	66,236	Israel Policy Forum	97,200
Heifer Project International, Inc.	58,466	Israel Scholarship Education Foundation	51,636
Heterodox Academy	85,000	Israel Tennis Centers Foundation, Inc.	85,188
HIAS, Inc.	119,788	Israel-America Academic Exchange	260,000
Hide and Seek Foundation	64,000	Italian American Museum	50,000
Hillel Foundation at Tufts University	231,990	iTrek, Inc.	384,600
Hillel School - Ocean, NJ	1,310,017	J Street Education Fund, Inc.	283,496
Hillel: The Foundation for Jewish Campus Life	1,845,132	Jackie Robinson Foundation, Inc.	101,000
HKY Kol Yaakov, Inc.	71,601	Jack's Tomorrow, Inc.	300,000
Hoffberger Institute for Text Study, Inc.	58,410	Jacobin Foundation Ltd.	67,819
Honeymoon Israel Foundation, Inc.	201,000	Jazz Foundation of America, Inc.	102,400
HonorHealth Foundation	50,500	JCC Rockland, Inc.	53,586
Hopewell Fund	1,910,000	JDRF International	81,876
Horace Mann School	114,350	Jersey Shore University Medical Foundation, Inc.	70,000
Horatio Alger Association of Distinguished Americans, Inc.	265,000	Jerusalem Foundation, Inc.	477,260
		Jewish Agency for Israel-North American Council	93,000
		Jewish Board of Family and Children's Services, Inc.	447,310
		Jewish Center - New York, NY	296,180



ORGANIZATION	AMOUNT	ORGANIZATION	AMOUNT
Jewish Center of Atlantic Beach	445,214	Kollel Beit Aharon	99,065
Jewish Center of the Hamptons	64,010	Kollel International, Inc.	215,344
Jewish Child Care Association of New York d/b/a JCCA	64,686	Kollel of the Jersey Shore, Inc. d/b/a Zichron Moshe	183,003
Jewish Community Center in Manhattan, Inc.	346,590	Kollel Shabbos Kodesh	318,000
Jewish Community Center on the Hudson, Inc.	500,100	Kumah, Inc.	50,000
Jewish Community Center on the Palisades	81,854	Lakewood Cheder School	74,096
Jewish Community Federation of San Francisco, the Peninsula, Marin and Sonoma Counties	1,553,095	Lanaar Elementary School, Inc.	50,360
Jewish Community High School of the Bay	82,500	Lang School	600,000
Jewish Community Relations Council of New York, Inc.	549,690	Larchmont Temple, Inc.	78,641
Jewish Family & Children's Service of Greater Mercer County	71,300	Larchmont-Mamaroneck Hunger Task Force, Inc.	157,500
Jewish Family & Children's Service of the Suncoast, Inc.	101,500	Larchwood Synagogue, Inc.	762,786
Jewish Family & Children's Services of Northern New Jersey, Inc.	50,537	Latino Economic Development Corporation of Washington DC	50,000
Jewish Family Service & Children's Center of Clifton-Passaic, Inc.	190,467	Lawrence Far Rockaway Community Kollel	59,283
Jewish Family Service of New Haven, Inc.	100,760	Lawyers for Children, Inc.	144,975
Jewish Federation of Greater Metrowest NJ	492,976	Leadership Enterprise for a Diverse America - LEDA	67,500
Jewish Federation of Greater Santa Barbara	360,000	Leap, Inc.	90,000
Jewish Federation of Greater Washington	97,394	Legal Aid Society - New York, NY	82,636
Jewish Federation of Northern New Jersey, Inc.	181,635	Legal Hand, Inc.	2,000,000
Jewish Federation of Palm Beach County, Inc.	368,930	Lehigh University	64,000
Jewish Federation of South Palm Beach County, Inc.	257,666	Leo Baeck Institute, Inc.	97,140
Jewish Federations of North America, Inc.	362,652	Leovdei Hashem, Inc.	71,379
Jewish Funders Network	1,438,849	Les Chercheurs d'Air	110,000
Jewish Heritage Center of Queens and Long Island	111,902	Leukemia and Lymphoma Society, Inc.	54,216
Jewish Heritage Programs	60,760	Lev Berel, Inc.	55,633
Jewish Institute for National Security of America	423,716	Lev Tamim, Inc.	123,500
Jewish Learning Institute of San Francisco	66,000	Liberty Science Center, Inc.	250,000
Jewish Museum	367,080	Lilith Publications, Inc.	73,310
Jewish National Fund - Keren Kayemeth Leisrael, Inc.	469,121	Limudei Da'As, Inc.	216,760
Jewish Records Indexing-Poland	91,782	Lincoln Center for the Performing Arts, Inc.	187,800
Jewish School of Miami Corp.	101,800	Lincoln Square Synagogue, Inc.	300,008
Jewish Story Partners	461,250	Litchfield Hills Conservancy, Inc.	160,000
Jewish Theological Seminary of America	303,750	Little Sun, Inc.	1,000,000
Jewish Women's Club, Inc.	50,000	Loomis Institute	515,936
Jews United for Justice, Inc.	180,660	Los Angeles Regional Food Bank	80,500
JGIVE-Friends of Asor Fund USA, Inc.	15,185,478	Lotus Endowment Fund, Inc.	50,000
Jimena, Inc.	82,350	Lower Manhattan Cultural Council, Inc.	119,500
Johns Hopkins University	140,947,596	Lubavitch of Arkansas	128,300
Jonas Philanthropies, Inc.	265,640	Lubavitch of the East End, Inc.	90,460
JTA-MJL New Corp	928,550	Lubavitch of West Palm Beach, Inc.	185,000
Juilliard School	182,250	Lubavitch-Chabad Jewish Center of Gainesville	52,700
Justice Defenders	250,000	Lung Cancer Research Foundation	86,554
Kansas City Girls Preparatory Academy	400,000	Luria Academy of Brooklyn	68,540
Kavod	54,680	M.Y. Keren Hashluchim, Inc.	204,500
Kehilat Romemu	306,330	M <sup>2</sup> : The Institute for Experiential Jewish Education	2,041,600
Kenyon College	73,500	Maalot	422,600
Keren Ezer L'nefesh	87,611	Mabas Fund, Inc.	759,458
Keren Hatorah d/b/a Yeshiva Katana D'satmar	1,003,000	Machne Israel, Inc. d/b/a Chabad Lubavitch Headquarters	122,164
Keren HaYeshivot Trust	1,068,332	Madraigos, Inc.	142,900
Keren Peulos	56,201	Magbit Foundation	81,600
Keren Yehoshua V'Yisroel, Inc.	56,130	Magen Abraham Yeshiva, Inc.	116,724
Keren Yom-Tov, Inc.	419,110	Magen Avraham of Brooklyn	79,867
Keshet Organization, Inc.	359,892	Magen David Congregation of Surfside, Inc.	103,977
Keter Shlomo Foundation, Inc.	93,637	Magen David Synagogue	209,979
Kipas Chasdei Shmuel Zanvil	450,100	Magen David Yeshivah	1,852,396
Kisco Foundation, Inc.	200,000	Mahaiwe Performing Arts Center, Inc.	65,700
Kol Israel Congregation & Center	248,385	Maimonides-Shalom Academy, Inc.	525,150
		Make A Film Foundation	100,000
		Make the Road New York	230,050
		Manhattan Class Company, Inc.	89,600

ORGANIZATION	AMOUNT	ORGANIZATION	AMOUNT
Manhattan High School for Girls	363,560	Moriah School of Englewood	197,071
Manhattan Jewish Experience Synagogue	199,556	MorseLife Foundation, Inc.	170,010
Ma'or Yeshiva High School, Inc.	61,907	Mosdot Beth Yaakov	57,114
Marc Lustgarten Pancreatic Cancer Foundation	77,804	Mount Sinai Hospital	7,352,495
Marin Academy	117,500	Mount Sinai Medical Center Foundation, Inc.	175,025
Martha's Vineyard Community Services, Inc.	501,000	Moving Picture Institute	50,000
Marty Hennessy Inspiring Children Foundation	60,000	MSI-US	50,000
Maryland Association for Parkinson Support, Inc.	250,000	Murmuration Research Institute, Inc.	14,000,000
Maryland Food Bank, Inc.	51,592	Museum at Eldridge Street	60,214
Masbia	93,167	Museum of Contemporary Art - Los Angeles, CA	152,500
Maskeel El Dal Society, Inc.	178,632	Museum of Jewish Heritage - A Living Memorial to the Holocaust	525,347
Massachusetts General Hospital	1,139,220	Museum of Modern Art	2,135,730
Massachusetts Institute of Technology	3,289,530	Myriad USA, Inc.	349,000
Mathematical Sciences Research Institute	102,000	NABU Global, Inc.	50,000
Mattan Basseter, Inc.	259,588	NACDL Foundation for Criminal Justice	50,000
Matteh Moshe, Inc.	83,695	Nachal Novea Mekor Chochma	152,750
Mayo Clinic Rochester	93,850	Nagel Jewish Academy	200,000
Mazel Educational Center	104,200	Nagen Project, Inc.	50,000
Mazon, Inc.: A Jewish Response to Hunger	133,511	NARAL Pro-Choice America Foundation	118,812
McLean Hospital Corporation	76,500	Nassau County AHRC Foundation, Inc.	61,500
Mechon Hadar d/b/a Hadar Institute	1,512,640	National Abortion Federation	100,054
Media Matters for America	115,750	National Association of Charter School Authorizers	500,000
Meharry Medical College	50,000	National Center for Learning Disabilities, Inc.	50,500
Memorial Sloan-Kettering Cancer Center	875,517	National Center for Transgender Equality	100,000
Me'ohr Bais Yaakov, Inc.	158,435	National Council of Jewish Women, Inc.	77,386
Meor Yitzchok, Inc.	302,160	National Jewish Outreach Program, Inc. d/b/a NJOP	77,736
Meor, Inc.	1,269,150	National Jewish Policy Center	65,500
Mercaz Academy	90,296	National Judicial College	50,000
Mesivta of Clifton	96,162	National Multiple Sclerosis Society	88,775
Mesivta of Long Beach	159,879	National Network of Abortion Funds	60,611
Mesivta Tifereth Israel of Rizhin	100,270	National Partnership for Women and Families, Inc.	134,500
Mesivta Yeshiva Rabbi Chaim Berlin	294,032	National Philanthropic Trust	327,500
Mesorah Heritage Foundation	153,472	National Psoriasis Foundation	85,990
Metropolitan Museum of Art	641,745	National Public Radio, Inc.	201,300
Metropolitan New York Coordinating Council on Jewish Poverty	651,499	National Ramah Commission, Inc.	170,050
Metropolitan Opera Association, Inc.	153,050	National Redistricting Foundation	100,000
Metropolitan Opera Guild, Inc.	63,150	National September 11 Memorial and Museum at the World Trade Center	51,585
Miami Beach Community Kollel, Inc.	70,436	National Society for Hebrew Day Schools a/k/a Torah Umesorah	309,268
Middle East Peace Dialogue Network, Inc.	298,000	National Women's Health Network, Inc.	501,015
Mid-Island Y Jewish Community Center, Inc.	66,360	National Young Farmers Coalition	80,400
Midrash Bet Nassi Mhhpt, Inc.	61,919	Natural Resources Defense Council, Inc.	79,289
Mikdash Eliyahu	531,763	Nature Conservancy	63,521
Mikvah Yisroel Dshikun Square	64,000	Navy SEAL Foundation, Inc.	90,000
Milhamta Shel Torah	91,000	Nefesh	99,599
Milken Institute	215,000	Nefesh Shimshon, Inc.	50,000
Milton Gottesman Jewish Day School of the Nation's Capital	61,480	Nefesh Yehudie, Inc.	300,300
Minchas Asher Foundation	226,940	Neighbors Link Corp.	89,000
Minister, Elders and Deacons of the Reformed Protestant Dutch Church of the City of New York	50,000	NEO Philanthropy, Inc.	75,000
Miracle Corners of the World, Inc.	72,000	Ner Israel Rabbinical College, Inc.	79,010
Mitzvah Man Foundation Corp.	78,427	Nesach Yisrael Institution	128,863
Mobilization for Justice, Inc.	56,800	Nesiv Hatorah, Inc.	69,025
Moise Safra Community Center, Inc.	396,198	Netanya Foundation, Inc.	50,000
Moishe House	3,360,118	Netivot Israel	84,850
Momentum Unlimited, Inc.	178,460	Netzach Educational Network, Inc.	248,600
Monmouth Medical Center Foundation, Inc.	142,701	Nevada Museum of Art, Inc.	50,000
Montefiore Medical Center	525,000	New 42nd Street, Inc.	68,500
Morgan Stanley Global Impact Funding Trust, Inc.	333,360	New Georgia Project Incorporated	140,000



ORGANIZATION	AMOUNT	ORGANIZATION	AMOUNT
New Heights Youth, Inc.	89,725	One Heartland, Inc.	50,000
New Israel Fund	1,715,270	Or Hachayim, Inc.	428,351
New Jersey Performing Arts Center Corporation	125,000	Oratorio Society of New York	95,100
New Jersey Theatre Alliance	50,000	Organization for the Resolution of Agunot, Inc.	95,461
New Profit, Inc.	100,000	Our Place in New York, Inc. d/b/a Magenu	129,350
New Venture Fund	7,220,000	P.E.F. Israel Endowment Funds, Inc.	5,758,782
New York and Presbyterian Hospital	622,300	PA Alliance Foundation	50,000
New York Board of Rabbis, Inc.	59,186	Pachamama Alliance	100,000
New York Botanical Garden	501,638	Palm Beach Orthodox Synagogue, Inc.	240,100
New York Cancer Center, Inc. d/b/a The Morris I. Franco Cancer Center	832,351	Pal-O-Mine Equestrian, Inc.	100,000
New York City Ballet, Inc.	363,570	Pancreatic Cancer Action Network, Inc. (PanCAN)	86,942
New York City Center, Inc.	119,950	Pardes Institute of Jewish Studies North America, Inc.	620,734
New York City Police Foundation, Inc.	120,500	Park Avenue Synagogue - Elberon, NJ	1,906,893
New York Edge, Inc.	63,500	Park Avenue Synagogue - New York, NY	1,238,066
New York Foundation for the Arts, Inc.	75,000	Parkinson's Research and Education Foundation, Inc.	100,000
New York Genome Center, Inc.	2,100,000	Partners for Happiness, Inc.	114,800
New York Historical Society	1,320,067	Partners In Health	86,100
New York Public Library, Astor, Lenox & Tilden Foundations	1,304,908	Partnership for Public Service, Inc.	50,000
New York Public Radio	240,090	Passages America Israel, Inc.	406,740
New York Shakespeare Festival	164,000	Passaic Hebrew Institute	83,070
New York Stem Cell Foundation, Inc.	1,267,500	Paul Taylor Dance Foundation, Inc.	150,000
New York Theatre Workshop, Inc.	111,500	PeaceWorks Network Foundation	107,000
New York Times Neediest Cases Fund	73,590	Pen American Center, Inc.	69,312
New York University	2,730,716	Penn Hillel	132,624
New York Women's Foundation	51,000	People for the American Way Foundation	81,200
New Yorkers for Parks	56,000	Philadelphia Chamber Music Society	150,330
New York-Presbyterian Fund, Inc.	106,750	Philharmonic-Symphony Society of New York, Inc.	77,710
Nextbook, Inc.	4,237,013	Pinelands Preservation Alliance, Inc.	300,000
NLI USA, Inc.	93,400	Planned Parenthood Federation of America, Inc.	301,757
Nonviolence International	372,500	Planned Parenthood of Greater New York, Inc.	129,784
North Miami Beach Kollel, Inc.	65,400	Planned Parenthood of Northern, Central and Southern New Jersey, Inc.	74,950
North Shore Hebrew Academy	116,290	Planned Parenthood of South Florida and the Treasure Coast, Inc.	61,940
North Shore Hebrew Academy High School	65,470	Planned Parenthood of the Rocky Mountains, Inc.	102,300
Northern Westchester Hospital Association	139,480	Players Philanthropy Fund	1,004,001
Northwell Health Foundation	129,310	Portland Art Museum	62,500
Northwestern University	187,290	Prep for Prep	114,050
Norton Museum of Art, Inc.	114,800	Princeton Hillel, Center for Jewish Life	101,110
NYCxD, Inc.	75,000	Priorities USA Foundation	300,000
NYU Langone Hospitals	2,400,090	Prizmah: Center for Jewish Day Schools, Inc.	215,418
Oceana, Inc.	150,400	Pro Publica, Inc.	84,272
Ohel Children's Home and Family Services, Inc.	515,455	Proclaim Justice, Inc.	50,000
Ohel Yaacob Congregation a/k/a Ocean Avenue Synagogue	597,216	Project Care of Brooklyn, Inc. d/b/a Emergency Parnossa Initiative	56,000
Ohel Yosef of Oakhurst, Inc.	88,506	Project Education Council, Inc.	200,000
Ohio Progressive Collaborative Education Fund	75,000	Project EzraH Needs, Inc.	172,465
Ohr Halacha, Inc.	51,999	Project Inspire, Inc.	52,046
Ohr Menachem	54,000	Project Torah And Biblical Scholarship, Inc.	238,890
Ohr Torah Stone Institutions of Israel	815,574	Project Yechi, Inc.	55,731
Ohr Yisrael Yeshiva, Inc.	50,000	Propel Network, Inc.	133,215
Oihel Nossan	400,000	Protect Democracy Project	200,000
OJC Fund	208,800	Proyecto Matria, Inc.	50,000
Old North Foundation of Boston, Inc.	50,000	PS1 Contemporary Art Center, Inc.	240,000
Oliver Scholars Program, Inc.	92,500	Public Art Fund, Inc.	626,500
On Site Opera, Inc.	69,000	Publicolor, Inc.	100,000
Once Upon Our Time Capsule	100,000	Purpose Built Communities Foundation, Inc.	1,000,000
One Acre Fund	2,161,770	Queens College Hillel	68,500
ONE Campaign	2,500,000	Quincy Asian Resources, Inc. (QARI)	366,885
One Family Fund	59,600	Rabbi Isaac Elchanan Theological Seminary	287,316

ORGANIZATION	AMOUNT	ORGANIZATION	AMOUNT
Rabbi Jacob Joseph School	139,590	Save the Children Federation, Inc.	218,271
Rabbinical College of Telshe, Inc.	177,318	SBH Community Service Network, Inc.	2,598,504
Rabeinu Ohr Hachaim d/b/a Rishon L'Tziyon	118,500	SCAN-Harbor, Inc.	123,300
RAJE-USA, Inc.	109,300	Scenic Hudson, Inc.	147,550
Ramapo for Children, Inc.	116,500	Schechter Institutes, Inc.	223,192
Ramaz School	829,768	School of American Ballet, Inc.	60,500
Rare, Inc.	3,700,400	Schwab Charitable Fund	247,493
Raymond F. Kravis Center for the Performing Arts, Inc.	92,450	Sculpture Center, Inc.	102,500
RC Young Adult Minyan, Inc.	112,487	SD Foundation	120,000
Reach for the Stars Learning Center	152,094	Seafarers' House, Inc.	100,000
Recess Activities	226,500	Securing America's Future Energy Foundation	485,000
Recidiviz, Inc.	50,000	Sefaria, Inc.	611,510
Reconstructionist Rabbinical College	75,350	Selfhelp Community Services Foundation, Inc.	127,910
Recorded Talmud	330,901	Sephardic Academy of Manhattan	121,700
Reflective Image, Inc.	90,000	Sephardic Center for Rabbinical and Secular Studies, Inc. d/b/a Allegra Franco Sephardic Women's Teachers Seminary	451,351
Refuah Helpline, Inc. d/b/a Refuah Resources	165,801	Sephardic Community Alliance	207,867
Regenerative Farms, Inc.	85,000	Sephardic Community Dayanut Program, Inc.	92,657
Regents of the University of Michigan	993,030	Sephardic Community Youth Center	1,495,557
Rehovot Hanahar	51,283	Sephardic Congregation of Lakewood	84,311
Reimagine, Inc.	725,030	Sephardic Congregation of Long Branch d/b/a Helping Hearts - Lev Ozer	445,317
Relief Resources, Inc.	69,162	Sephardic Foundation for Torah Studies, Inc.	57,650
Religious Zionist Youth Movement - Bnei Akiva of the US & Canada, Inc.	153,717	Sephardic Heritage Museum, Inc.	617,956
Renaissance Charitable Foundation, Inc.	250,000	Sephardic Institute	203,931
Renewal of Life, Inc.	802,182	Sephardic Medical Resources, Inc. d/b/a Sephardic Division of Chaim Medical	358,262
Repair the World, Inc.	539,330	Sephardic Mikveh of Midwood, Inc.	216,687
Research Foundation of the City University of New York	80,000	Sephardic Synagogue - Brooklyn, NY	88,279
Research Foundation of the State University of New York	60,000	Sephardic Torah Center	692,085
Resources for Children with Special Needs, Inc. d/b/a INCLUDEnyc	85,000	Services for Children with Hidden Intelligence, Inc.	250,908
Reut USA	113,000	Services for Hidden Intelligence, Inc.	53,910
Rites of Passage and Empowerment	60,000	Seventh Regiment Armory Conservancy, Inc.	100,500
Riverdale Country School, Inc.	113,250	Shaare Ezra Congregation, Inc. - Long Branch, NJ	51,900
Riverdale Jewish Center	555,901	Shaare Zion Congregation - Brooklyn, NY	2,032,626
Riverdale Minyan, Inc.	140,760	Shaare Zion of Great Neck Corp.	60,375
Robert W. Woodruff Arts Center, Inc.	62,500	Shaarei Zion Institutions, Inc.	52,000
Robin Hood Foundation	1,219,952	Shabbat Project, Inc. d/b/a OneTable	156,570
Rock and Roll Hall of Fame and Museum, Inc.	103,000	Shalem Foundation	255,000
Rockefeller Philanthropy Advisors, Inc.	3,980,000	Shalom Hartman Institute of North America	387,966
Rockefeller University	2,074,600	Share of New Square, Inc.	74,885
Rofeh Cholim Cancer Society, Inc.	137,030	Share Our Strength, Inc.	53,186
Roger Williams University	76,000	Sharsheret, Inc.	296,035
Ronald McDonald House of New York, Inc.	88,475	Shavei Hevron Institutions, Inc.	219,432
Ross Institute	50,000	Shed NYC, Inc.	200,750
Roundabout Theatre Company, Inc.	460,480	She'erit Ezra, Inc.	223,800
Row New York	80,000	Shefa School, Inc.	693,257
Ruth and Norman Rales Jewish Family Services, Inc.	180,034	Shirat David Foundation	65,100
Sacred Spaces	51,000	Shivat Zion Torah Center, Inc.	57,700
SAFE Foundation, Inc.	498,647	Sh'or Yohuv	99,896
Sag Harbor Partnership, Inc.	75,000	Shriners Hospitals for Children	51,751
Saint Ann's School	59,500	Shul of Bal Harbour, Inc.	312,607
Salanter Akiba Riverdale Academy (SAR)	2,416,260	Shulamith Institute for Girls, Inc.	116,130
Salk Institute for Biological Studies	100,000	Shuvah Israel Torah Center	80,724
Samuel Field YM & YWHA, Inc. d/b/a Commonpoint Queens	336,206	Shuvi Nafshi Foundation, Inc.	763,664
Samuel Waxman Cancer Research Foundation	103,400	Shuvu Return, Inc.	279,603
Sandy Hook Promise Foundation	61,742	Sid Jacobson Jewish Community Center, Inc.	74,430
Sansum Clinic	1,000,000	Sierra Club Foundation	57,421
Santa Barbara Cottage Hospital Foundation	50,000	Silent Spring Institute, Inc.	120,000
Sapien Labs	200,000		

ORGANIZATION	AMOUNT	ORGANIZATION	AMOUNT
Simha Organization, Inc.	221,266	The Beach Minyan at The Summer Shul, Inc.	94,254
Sinai Retreats	100,500	The Binyamin Fund, Inc.	114,200
Sinai Special Needs Institute	236,194	The Carl Schurz Park Conservancy, Inc.	76,000
Sing Sing Prison Museum	475,000	The Center for Global Enterprise Ltd.	678,500
Sixpoint, Inc.	95,000	The City University of New York School of Law Foundation, Inc.	75,600
Skidmore College	102,500	The Englewood Shtiebel, Inc.	208,460
Skystone Foundation, Inc.	100,000	The First 72+	198,000
Smithsonian Institution	2,107,480	The Frederick Gunn School Incorporated	525,600
Social and Environmental Entrepreneurs, Inc.	100,800	The Gleanings Foundation	50,000
Social Good Fund	360,915	The Healthy US Collaborative, Inc.	90,000
Social Justice and Solidarity Fund	200,000	The Institute for the Advancement of Education in Jaffa, Inc.	104,980
Society for the Prevention of Cruelty to Animals of AA Co, MD, Inc.	50,000	The Leffell School	241,082
Solomon Schechter Day School of Nassau County	125,800	The Marfan Foundation, Inc.	975,000
Solomon Schechter School of Manhattan	2,497,015	The Maryland Book Bank, Inc.	50,000
Southampton Hospital Foundation, Inc.	58,850	The Nest Fund, Inc.	62,602
Southern Poverty Law Center, Inc.	164,692	The Prince of Wales's Charitable Foundation	500,000
Special Children Center	469,710	The SASS-ARENA Foundation for Medical Research, Inc.	75,000
Special Ed Academy of Deal, Inc. (SEAD)	133,149	The SEED School of Maryland, Inc.	75,000
Special Olympics Southern California, Inc.	50,000	The Sephardic Food Fund, Inc.	595,156
Specialty Purebred Cat Rescue of Southeastern WI, Inc.	100,000	The Thoracic Surgery Foundation	50,000
Spero Recovery, Inc.	125,500	The Torah Institute, Inc.	103,740
Spirit of America Worldwide	1,481,500	The Well in Memory of the Sassoon Children, Inc.	140,344
St. Bernard's School, Inc.	354,585	Theatre Aspen	113,220
St. Francis Friends of the Poor, Inc. St. Francis Residence II	150,000	Theatre for a New Audience, Inc.	61,500
St. Jude Children's Research Hospital	196,584	Think New Mexico	128,250
Stanford Jewish Center, Inc.	55,040	Third Way Institute	100,000
Stanford University Board of Trustees Leland Stanford Junior University	110,411	Thomas Aquinas College	50,000
Stephen Gaynor School	71,500	Tides Center	71,360
Stephen Wise Free Synagogue	85,980	Tiferet Rabbi Akiva, Inc.	58,000
Stone Barns Restoration Corporation	56,000	Tiferet Shaul	127,797
Storahtelling Lab/Shul, Inc.	187,110	Tikkun Hayam-Repair the Sea, Inc.	50,000
STREB, Inc.	100,000	Tikva Corp. d/b/a Tikva Children's Home	144,615
Struggle to Save Ethiopian Jewry, Inc.	340,168	Tikvah Fund	1,334,514
Student Leadership Network, Inc.	640,000	Tikvah-Etta & Lazear Israel Center for the Developmentally Disabled	250,000
Suffield Academy	175,500	Tisch Multiple Sclerosis Research Center of New York, Inc.	2,052,036
Summer Camp, Inc.	65,650	Tom Coughlin J. Fund Foundation, Inc.	76,500
Sunrise Day Camps Association, Inc.	115,640	Tomche Shabbos of Rockland County	95,206
Sustainability Laboratory, Inc.	542,750	Tomchei Torah of New York	112,373
SWC Museum Corp.	205,000	Tony Blair Foundation	85,000
Sylvia Center, Inc.	138,775	Torah Academy of Bergen County	180,222
Synagogue of Deal	807,074	Torah Links of Lakewood, Inc.	500,000
Syracuse University	166,700	Toras Emes Academy of Miami, Inc.	175,610
Talmudic Research Center of Northern New Jersey	107,180	Torat Shraga, Inc.	103,647
Tamar Fund International, Inc.	94,340	Torath Israel Sephardic Congregation	62,705
Target ALS Foundation, Inc.	15,111,000	Tov Vachesed, Inc.	112,256
Team Hashem, Inc. d/b/a The Yellow House	199,399	Tova Uvrucha, Inc.	393,060
Tehilot Israel, Inc.	73,202	Tower Hill School	50,000
Tel Aviv Museums American Friends, Inc.	76,800	Tragedy Assistance Program for Survivors, Inc.	87,960
Telluride Council for the Arts and Humanities	75,000	Transforming CDC, Inc.	50,000
Temple Adas Israel of Sag Harbor, NY	80,550	Transportation Alternatives, Inc.	253,636
Temple Beth El of Boca Raton, Inc.	208,146	Traveling Press Fund, Inc.	917,588
Temple Beth Sholom - Roslyn Heights, NY	109,500	Tribe Media Corp.	60,000
Temple Israel of the City of New York	59,887	Trinity Episcopal Schools Corporation	54,500
Temple Shaaray Tefila a/k/a Congregation Shaaray Tefila	99,145	T'ruah	108,590
Tennessee State Collaborative on Reforming Education	5,300,000	Trustees of Columbia University in the City of New York	4,618,155
The 613 Foundation	57,816	Trustees of Dartmouth College	611,756
The Barack Obama Foundation	5,015,350		
The Barn Shul, Inc.	150,000		

ORGANIZATION	AMOUNT	ORGANIZATION	AMOUNT
Trustees of Princeton University	1,549,913	Westchester Day School	88,736
Trustees of the Congregation Shearith Israel in the City of NY	372,662	Westchester Jewish Center	200,849
Trustees of the Smith College	568,428	Westchester Jewish Community Services, Inc.	75,271
Trustees of the University of Pennsylvania	2,759,206	Westchester Philharmonic, Inc.	93,264
Trustees of Tufts College	4,561,500	Westchester Reform Temple	125,126
TSQ, Inc.	88,650	Westchester Torah Academy	68,116
Tulsa Community Foundation	100,000	Westhampton Synagogue, Inc.	180,500
Type Media Center, Inc.	50,100	What is Missing Foundation	150,000
Tzedakah Box, Inc.	122,000	White Plains Hospital Medical Center	295,793
Tzohar Israel Foundation	148,210	Whitehead Institute for Biomedical Research	50,000
Tzur Foundation, LLC	187,714	Whitney Museum of American Art	327,751
UCLA Foundation	2,201,475	Wildlife Conservation Society	226,686
UJA-Federation of Greenwich	61,925	Wilson Bruce Evans Home Historical Society	240,180
UJA-Federation of New York, Inc.	25,825,748	WNET	324,405
Unchained at Last	100,000	Women In Need, Inc.	111,500
Understood for All, Inc.	70,000	Women's International Zionist Organization	270,425
Union for Reform Judaism	158,940	Woodbury Jewish Center, Inc.	83,111
Union of Concerned Scientists, Inc.	225,502	Woodside Synagogue - Silver Spring, MD	108,405
Union of Orthodox Jewish Congregations of America	1,541,257	Working America Education Fund	119,200
United Jewish Federation of Princeton Mercer Bucks, Inc.	52,000	World Central Kitchen Incorporated	277,233
United Jewish Federation of Stamford	75,078	World Jewish Congress - American Section, Inc.	81,369
United Mashadi Jewish Community of America, Inc.	59,495	World Trade Center Performing Arts Center, Inc.	101,000
United Munkacser Yeshivos	174,050	Yad David, Inc.	327,015
United Neighborhood Houses of New York, Inc.	122,400	Yad Elka, Inc.	250,000
United States Fund for UNICEF	58,126	Yad Henna Sara, Inc.	245,000
United States Holocaust Memorial Council	353,835	Yad Sarah	439,870
United States Rowing Association	50,000	Yad Yaakov	82,300
United Way of Monmouth and Ocean Counties, Inc.	130,000	Yad Yosef	4,283,120
University of Baltimore Foundation, Inc.	100,000	YAFFED, Inc.	86,636
University of California San Francisco Foundation	101,000	Yale University	994,973
University of Cape Town	1,250,000	Yavneh Academy & Talmud Torah of Paterson	139,070
University of Chicago	125,550	Yeshiva Gedolah Bais Yisroel, Inc.	78,220
University of Florida Foundation, Inc.	56,500	Yeshiva Gedolah of Great Neck	58,261
University of Miami	147,250	Yeshiva Har Torah	74,927
University of Southern California	496,180	Yeshiva High School for Girls, Inc.	286,071
University of the People	77,500	Yeshiva Imrei Bina, Inc.	80,180
University of Toledo Foundation	65,000	Yeshiva Keren Orah	482,004
University Settlement Society of New York	79,030	Yeshiva Ketana of Long Island	218,513
Upstart Bay Area	50,360	Yeshiva Keter Torah, Inc.	369,644
USA Water Polo, Inc.	225,000	Yeshiva Ktana of Passaic	590,646
Valley Hospital Foundation, Inc.	67,000	Yeshiva Mikdash Melech	155,483
Vanguard Charitable Endowment Program	2,030,800	Yeshiva of Bergen County, Inc.	222,510
Vassar College	111,750	Yeshiva of Far Rockaway	69,977
Vera Institute of Justice, Inc.	195,500	Yeshiva of North Jersey	126,460
Village Academies, Inc.	503,000	Yeshiva of Spring Valley, Inc.	69,708
Village Temple	178,600	Yeshiva Ohr Torah Community School, Inc. (Manhattan Day School)	111,440
Volunteers In Medicine Berkshires, Inc.	161,650	Yeshiva Ohr Yisroel	55,760
Vote Solar	3,000,000	Yeshiva Shaar Hatorah, Inc.	57,770
Vote.org	102,236	Yeshiva Shaare Torah, Inc.	714,341
Voter Participation Center	157,000	Yeshiva Torah Vodaath	227,036
W. Hardy Hendren Pediatric Surgical and Urological Education Foundation, Inc.	50,000	Yeshiva Toras Chaim of Greater Miami, Inc.	108,600
Washington Institute for Near East Policy	522,160	Yeshiva Toras Yisrael	337,100
Wesleyan University	71,900	Yeshiva University	3,277,861
West Harlem Environmental Action, Inc.	50,150	Yeshiva University High Schools	110,590
West Side Center for Community Life, Inc.	483,086	Yeshiva Yad Aharon, Inc.	57,200
West Side Center for Jewish Life, Inc.	56,550	Yeshivah of Flatbush	2,544,817
West Side Hatzolah	53,302	Yeshivas Chasidei Belz-Belz Institutions in Israel	108,568
West Side Kollel Torah Center	201,938	Yeshivat Chovevei Torah Rabbinical School, Ltd.	597,316
		Yeshivat Darche Eres, Inc.	3,278,508

<b>ORGANIZATION</b>	<b>AMOUNT</b>
Yeshivat He'Atid Incorporated	54,580
Yeshivat Hechal Shemuel, Inc.	220,587
Yeshivat Lev Torah	104,180
Yeshivat Maharat, Inc.	319,270
Yeshivat Ohel Torah	166,141
Yeshivat Or Hachaim of Lakewood, Inc.	310,559
Yeshivat Sha'alvim, Inc.	199,390
Yeshivat Shalsholet, Inc.	239,140
Yeshivat Yagdil Torah, Inc.	315,715
Yivo Institute for Jewish Research, Inc.	111,002
Young Israel of Bal Harbour, Inc.	140,327
Young Israel of Jamaica Estates	51,151
Young Israel of Lawrence-Cedarhurst	204,087
Young Israel of New Rochelle	162,210
Young Israel of Scarsdale	156,086
Young Israel of the West Side	112,389
Young Israel of White Plains	53,069
Young Israel of Woodmere	110,362
Young Israel Ohab Zedek of North Riverdale/Yonkers	86,360
Young Judaea Global, Inc.	309,860
Young Men's & Young Women's Hebrew Association d/b/a 92nd Street Y	2,865,760
Young Men's Christian Association of Central Maryland, Inc.	50,000
Young Men's Christian Association of Warren, PA	100,000
Young Women's Christian Association of Greenwich, CT	58,000
Youth Renewal Fund	811,860
YouthPower365	150,000
Zamir Choral Foundation, Inc.	67,705
Zeta Charter Schools, Inc.	333,000
Zichron Menachem, Inc.	92,920
Zionist Organization of America	86,942
Zohar Hatorah, Inc.	311,100
<b>Total Grants \$50,000 and over</b>	<b>846,984,640</b>
<b>Grants under \$50,000</b>	<b>60,893,697</b>
<b>Total Grants</b>	<b>907,878,337</b>



## **JCF is the donor advised fund of the Jewish community.**

For over 50 years, the Jewish Communal Fund (JCF) has been helping people achieve their philanthropic and tax-saving goals simply and efficiently, with flexibility, full confidentiality, convenience, and personal service from a dedicated professional staff. JCF has grown to be one of the largest and most generous networks of Jewish philanthropists in the world.

**[jcfny.org](http://jcfny.org)**

**JCF** JEWISH  
COMMUNAL  
FUND